

Perfect Match.



VisuNet FLX—
the Modular HMI Platform for Use
up to Zone 2/22, Div. 2

The one-in-a-million HMI system
that perfectly fits your application.



Your automation, our passion.

 **PEPPERL+FUCHS**

Designed for Zone 2/22 and Div. 2



Stainless Steel Enclosure

The VisuNet FLX series was specially developed for applications in the chemical and petrochemical industries. The operator stations, mounted within the process area, allow workers direct access to the automation software required to run and monitor the process. With certifications for Zone 2/22 and Div. 2, the platform offers a solution for areas where potentially explosive substances are transferred and filled.

Pharmaceutical Industry

By design, the FLX is constructed for hygienic applications. The touch screen and enclosure are resistant to aggressive and corrosive substances, making it an excellent solution for life science applications. High-quality all-stainless steel (1.4301/304) is used for housings and mounting solutions to easily meet GMP regulations.

The VisuNet FLX can be directly combined with a variety of hardware accessories. Additional accessories can be found at pepperl-fuchs.com.



RFID Reader

The optionally available RFID reader for the VisuNet FLX can significantly speed up user logon processes. In addition, it is possible to increase access security by requiring an RFID card. The reader itself has been designed to be suitable for use in pharmaceutical cleanroom environments in order to match the areas of application of the VisuNet FLX System.



Aluminum Enclosure

The FLX with a marine-grade aluminum enclosure make this HMI ideal for indoor and outdoor applications that require extended temperature ranges of -20°C ... $+50^{\circ}\text{C}$. The robust housing can be additionally equipped with components in the form of a canopy and side or rear protection elements, depending on the environmental conditions.

Panel Mounting

The different display sizes allow a high degree of flexibility in panel mounting. Depending on the requirements, a 15.6", 19", or 21.5" display can be installed. Combined with the extended temperature range, the homogeneous compression of the sealing gasket as well as the pharmaceutical design, the VisuNet FLX can be used for various panel mount applications.



Peripherals

A comprehensive range of peripherals complements VisuNet industrial monitors and box thin clients. These devices allow you to optimize VisuNet operator workstations and operator panels for a particular application and further extend your process.

Life Sciences and GMP

Optically-bonded display

- Increased optical clarity
- Reduced sunlight reflection
- Enhanced ruggedness (against impacts)
- Protection against dust/moisture

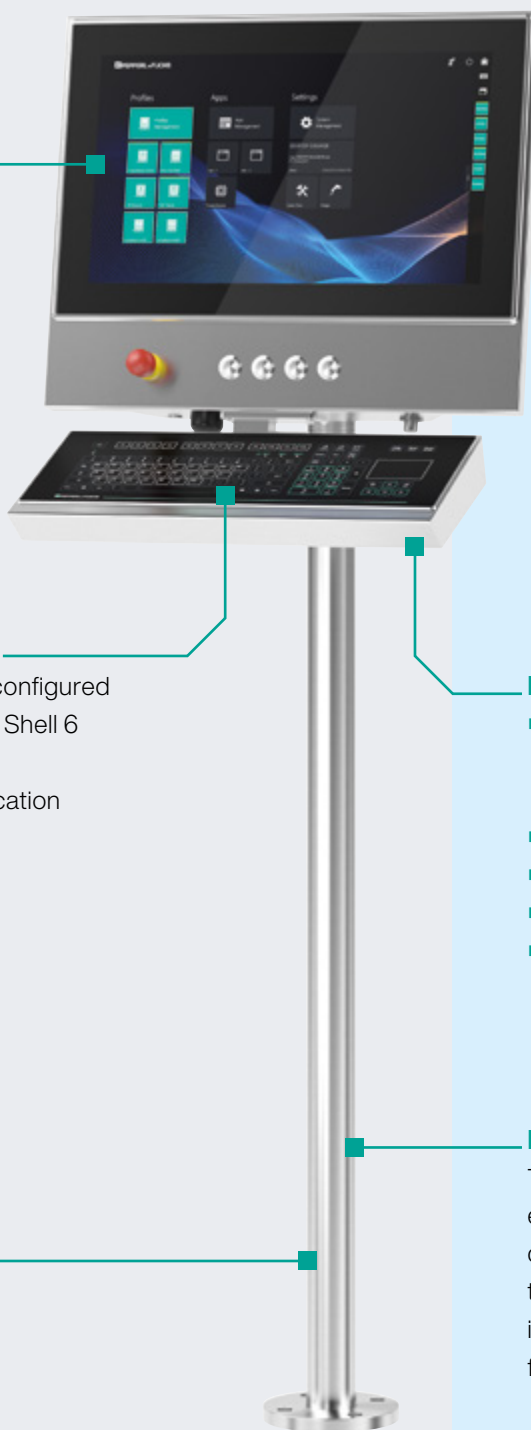
Simple replacement of components

The VisuNet FLX computing unit can be configured as a remote monitor with preinstalled RM Shell 6 firmware, high-performance PC, or as a direct monitor—depending on your application and requirements.



Flexible and easy to open

The VisuNet FLX is easy to open. This facilitates easy replacement of components in the plant or in the field.



Full stainless steel enclosure

- Industrial all-stainless steel design with optional pharmaceutical-type housing that meets GMP regulations
- Hygienic design
- No steps or edges
- Easy cleaning
- Resistant to common cleaning agents

Modularity

The fully modular VisuNet FLX allows easy assembly and replacement of components in the field. Furthermore, the modules can be configured individually, resulting in maximum flexibility.

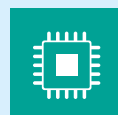
Thin Client Portfolio:
from the control room to
applications in Zone 1/21
and Division 1



Reliable operation of all
components in a wider
temperature range:
0 °C ... +40 °C



Future-oriented:
Celeron and i5 processors
from Intel's seventh
generation



Modular system for simple
mounting and replacement of
components in the field



Marine and Extended Temperature

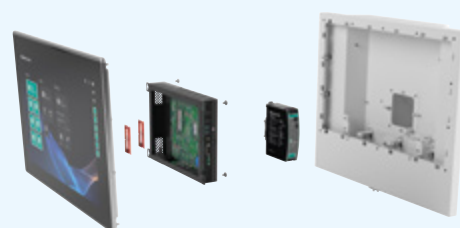


Protection components

The optional protection components (canopy, side and back protection) create artificial shade, serve for heat reflection (infrared light), and increase mechanical protection against adversity of weather for optimal placement of outdoor applications.

Aluminum enclosure

- Marine-grade aluminum design
- No steps or edges
- Resistant to weathering
- More flexibility and increased protection through extended temperature range



Flexible and easy to open

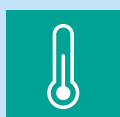
The VisuNet FLX is easy to open. This facilitates the replacement of components during operation in the plant.



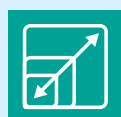
Global service and support: international network and globally certified products



Thin Client Portfolio: for indoor and outdoor applications in Zone 2/22 and Division 2



Reliable operation of all components in an extended temperature range: -20 °C ... +50 °C



High flexibility and adaptability to different applications



For more information, visit
pepperl-fuchs.com/pf-VisuNetApp

Configure Your System

Use our product configurator to quickly find the VisuNet FLX HMI system that is ideally suited for your application. With just a few clicks, you can choose between the three basic configurations (HMI system, panel PC, box PC) and the associated product attributes such as CPU type, RAM, or operating system.

When you have completed your configuration, you will receive a type code and can request a non-binding quote directly from us. If you need support, have requirements that are not included in the configurator attributes, or need a custom HMI solution, please use the contact form in the configurator and specify your request in more detail. Our experts look forward to hearing from you!



For more information, visit
pepperl-fuchs.com/pf-VisuNetConfig

VisuNet RM Shell— Next-Generation Firmware

Each VisuNet FLX Remote Monitor is equipped with VisuNet RM Shell, the latest generation of firmware for our thin-client-solutions. Security, reliability, and user-friendliness were the focus in its development. The latest update features a modern Windows® 10 IoT operating system and supports all common remote protocols, including Microsoft® RDP10, VNC, and NetC@P. This makes the RMs fully compatible with both virtualized and traditional workstation-based process control systems.



The VisuNet Control Center allows users to efficiently manage thin clients from a central point without having to enter hazardous areas or clean rooms.



Administrators can maintain Pepperl+Fuchs thin clients remotely, install firmware updates, and use remote commands such as restart or shutdown.



In case of failures, administrators can easily connect via session shadowing to provide remote support.



VisuNet Control Center works with VisuNet RM Shell and is optimized for the Pepperl+Fuchs firmware.

“One Fits All”—Design for Maximum Flexibility

VisuNet FLX is, as its name suggests, a comprehensive range of highly flexible operator workstations and monitoring systems from Pepperl+Fuchs for Zone 2/22, Div. 2 and non-hazardous areas. The new platform is tailored to the needs of the petrochemical, chemical, and pharmaceutical industries. Due to the fully modular design, the HMI solutions can be configured to maximize functionality and the platform can be customized quickly and easily in the field.

Three basic configurations are available and are supplemented by a continuously expanding range of peripheral devices:

- HMI system
- Panel PC
- Box PC

Choose from a variety of preconfigured VisuNet FLX solutions that are readily available, or let our global Solution Engineering Centers (SECs) design a fully customized solution based on the VisuNet FLX.

Worldwide Solution Expertise

At market launch, we already have a wide range of preconfigured VisuNet FLX solutions available for you as “Preferred Products”, covering a large part of common industrial applications.

If you have any additional individual customization requirements, you can rely entirely on our Solution Engineering Centers (SECs). Here we develop and manufacture HMI solutions for the entire world.

For example, a large selection of already qualified control elements is available for individual solution design. Solutions for dual monitor or mobile applications are also already included in the design of the VisuNet FLX series and can be custom manufactured if required.



For more information, visit
pepperl-fuchs.com/pf-flx



Your automation, our passion.

Explosion Protection

- Intrinsic Safety Barriers
- Signal Conditioners
- FieldConnex® Fieldbus Infrastructure
- Remote I/O Systems
- Electrical Explosion Protection Equipment
- Purge and Pressurization Systems
- HMI Systems
- Mobile Computing and Communications
- HART Interface Solutions
- Surge Protection
- Wireless Solutions
- Level Measurement

Industrial Sensors

- Proximity Sensors
- Photoelectric Sensors
- Industrial Vision
- Ultrasonic Sensors
- Radar Sensors
- Rotary Encoders
- Positioning Systems
- Inclination and Acceleration Sensors
- Vibration Monitoring
- Industrial Ethernet
- AS-Interface
- IO-Link
- Identification Systems
- Displays and Signal Processing
- Connectivity

www.pepperl-fuchs.com

Subject to modifications • © Pepperl+Fuchs

Printed in Germany • Part. No. 70152507 11/23 01 • public



Pepperl+Fuchs Quality

Download our latest policy here:

www.pepperl-fuchs.com/quality