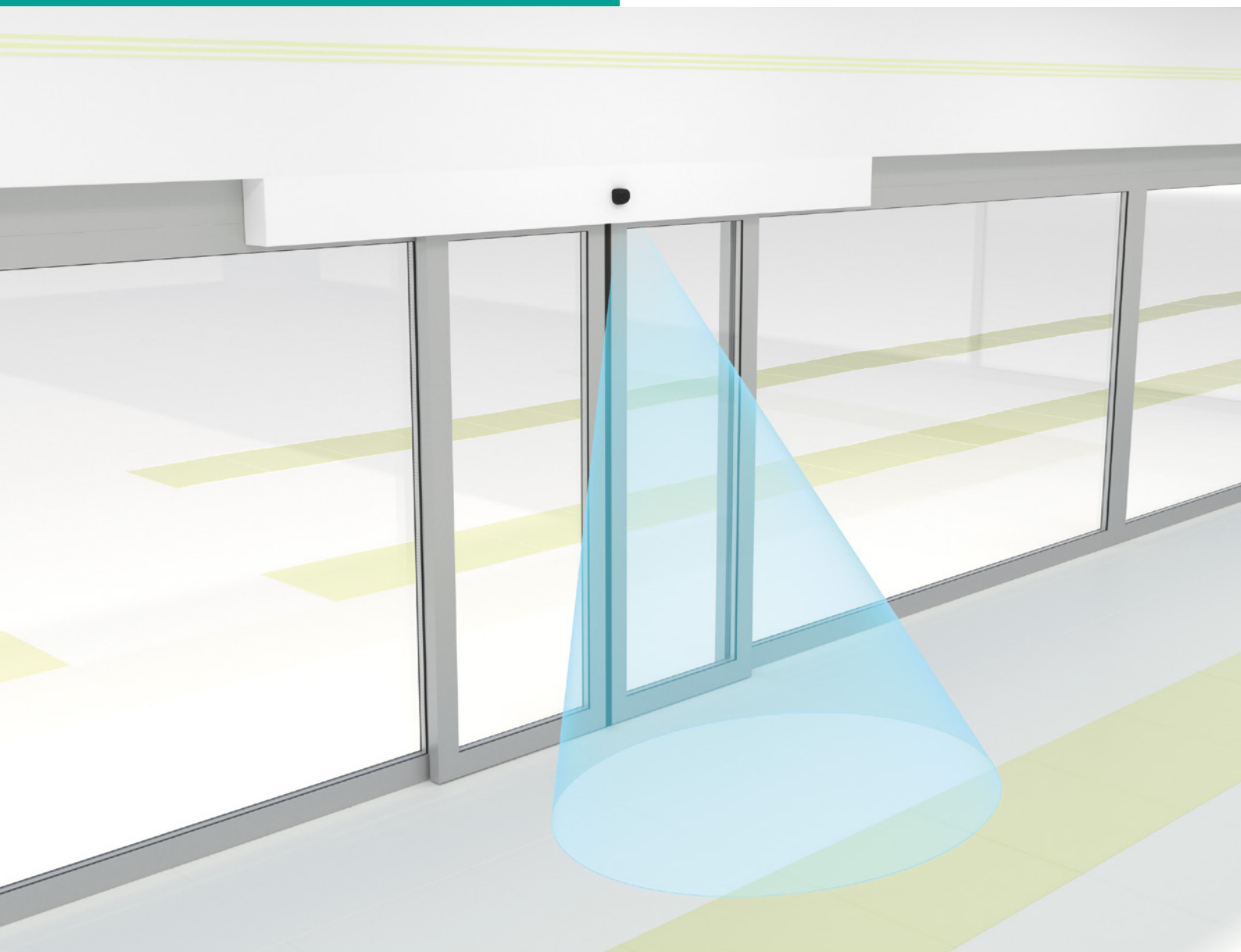


# Sending New Signals.

Functionality, affordability, and superior quality in a miniature cube housing.

ECHO-M Radar-Based Opening Impulse Sensor



Your automation, our passion.

 **PEPPERL+FUCHS**

# Reliable Detection System for Automatic Doors

The ECHO-M is a cost-effective and straightforward opening impulse sensor for basic applications with a high-quality design typical of Pepperl+Fuchs. Based on powerful 24 GHz technology with microprocessor control, the radar motion sensor reliably detects people and objects at all times, even in challenging ambient conditions.

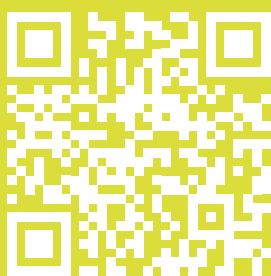
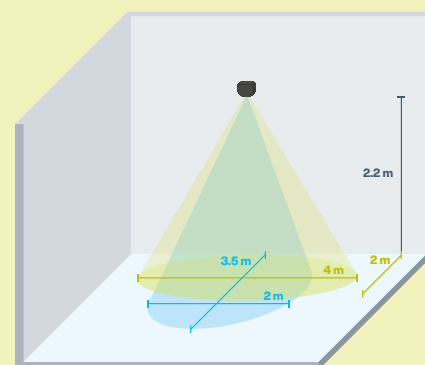
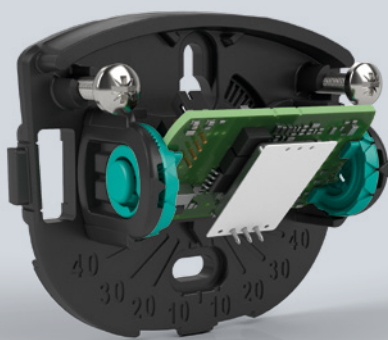
### Basic Functions, Excellent Quality

The ECHO-M is suitable for use on revolving and sliding doors. Rigorous quality standards covering everything from the design to the manufacturing process ensure that the ECHO-M functions reliably. Due to its rugged electronic and mechanical design, the radar sensor is extremely durable. A clearly visible green LED also enables operators to check the status of the sensor while it is running—even when the housing is closed. The ECHO-M can be mounted on walls or ceilings and the cable can be fed in through the side or the rear of the device, making it easy to adapt to a variety of installation conditions.

### Excerpt of Technical Data

### ECHO-M

<b>Sensing range</b>	At a 2200 mm installation height and 30° inclination angle: 2000 mm × 4000 mm (D × W) (standard) or 3500 mm × 2000 mm (D × W) (narrow)
<b>Installation height</b>	3000 mm
<b>Degree of protection</b>	IP54
<b>Ambient temperature</b>	−25 ... +55 °C
<b>Dimensions</b>	75 mm × 64 mm × 44 mm
<b>Operating voltage</b>	24 V DC ±10 %
<b>Signal output</b>	Solid-state relay
<b>Connection</b>	35 mm connection adapter included in scope of delivery



For more information, visit:  
[pepperl-fuchs.com/pf-echo](http://pepperl-fuchs.com/pf-echo)

### Highlights

- Cost-efficient radar sensor with basic functionality for automatic doors
- Highest quality standards in product design and development—for maximum reliability
- Increased durability due to solid electronic and mechanical design
- Quick and easy commissioning using push buttons and visible angle marking
- Especially compact and customizable housing color—for discreet integration into any door design