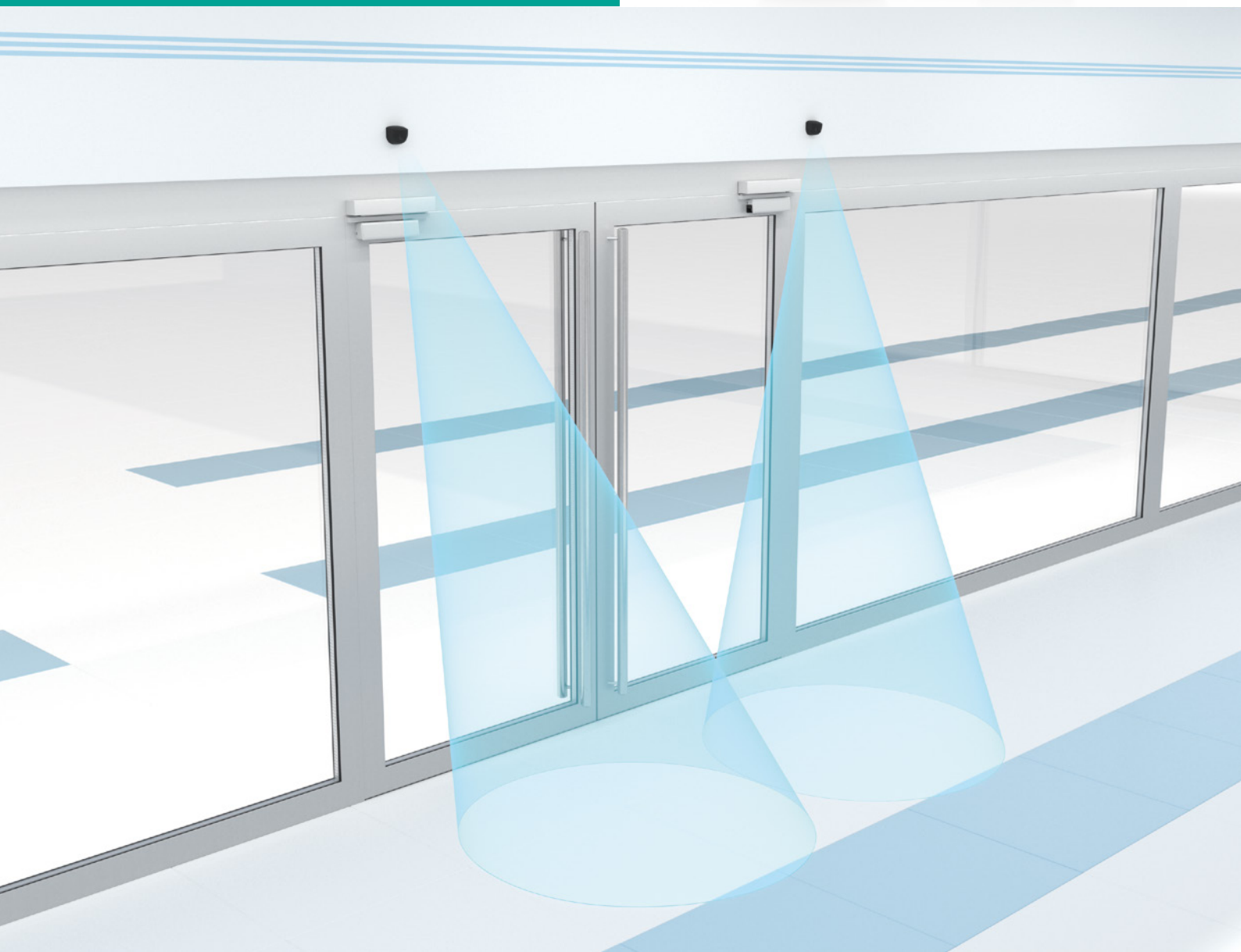


Sending New Signals.

Functionality, affordability, and superior quality in a miniature cube housing.

ECHO-D Radar-Based Opening Impulse Sensor



Your automation, our passion.

 **PEPPERL+FUCHS**

Maximum Flexibility for Automatic Doors

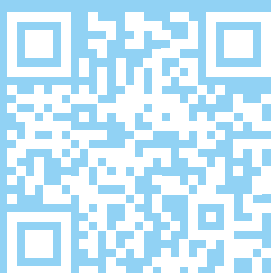
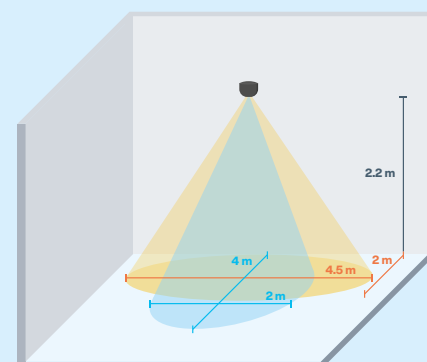
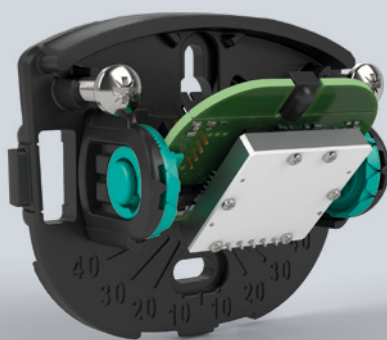
The ECHO-D opening impulse sensor offers all of the standard functions required for the efficient operation of automatic doors, while the remote control function provides additional convenience. Based on powerful 24 GHz technology with microprocessor control, the radar sensor detects moving objects approaching revolving doors, sliding doors, and one-wing and two-wing revolving doors.

All the Standard Functions, Excellent Value for Money

The high flexibility of the ECHO-D allows it to be adapted to suit a wide variety of detection tasks, including those that require cross-traffic suppression, direction detection, or slow-motion mode. The sensor features large, easy-to-see push buttons that can be used to adjust the sensitivity. The special highlight of this device is its remote control function, which enables convenient operation even while the device is running. Due to a high level of immunity, the sensor is insensitive to ambient conditions such as rain and vibration. The green LED is clearly visible—even in brightly lit environments—and ensures straightforward commissioning and diagnostics.

Excerpt of Technical Data

	ECHO-D
Sensing range	At a 2200 mm installation height and 30° inclination angle: 2000 mm × 4500 mm (D × W) (standard) or 4000 mm × 2000 mm (D × W) (narrow)
Installation height	4000 mm
Degree of protection	IP54
Ambient temperature	-25 ... +55 °C
Dimensions	75 mm × 64 mm × 50 mm
Operating voltage	24 V DC ±10 %
Signal output	Solid-state relay
Connection	2.5 m connection cable included in scope of delivery
Remote control	RADAR RC remote control



For more information, visit:
pepperl-fuchs.com/pf-echo

Highlights

- Can be adjusted via standard remote control for especially convenient operation
- High level of immunity for seamless operation even outdoors
- Cross-traffic suppression, direction detection, and slow-motion mode to optimally adapt to the detection task
- Increased durability due to solid electronic and mechanical design
- Especially compact and customizable housing color—for discreet integration into any door design