

# LVL-M3

## Vibration Limit Switch

### ATEX:

II 1/2G Ex ia IIC T6...T1 Ga/Gb

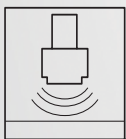
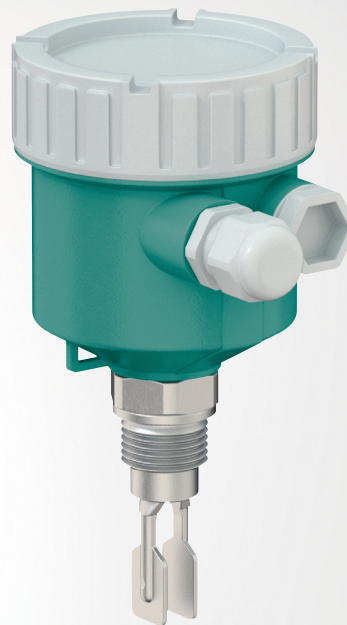
II 2 GEx ia IIC T6...T1 Gb

### IECEX:

Ex ia IIC T6...T1 Ga/Gb

Ex ia IIC T6...T1 Gb

Temperature Tables



---

With regard to the supply of products, the current issue of the following document is applicable:  
The General Terms of Delivery for Products and Services of the Electrical Industry, published by the Central Association of the Electrical Industry (Zentralverband Elektrotechnik und Elektroindustrie (ZVEI) e.V.) in its most recent version as well as the supplementary clause: "Expanded reservation of proprietorship"

#### **Worldwide**

Pepperl+Fuchs Group

Lilienthalstr. 200

68307 Mannheim

Germany

Phone: +49 621 776 - 0

E-mail: [info@de.pepperl-fuchs.com](mailto:info@de.pepperl-fuchs.com)

#### **North American Headquarters**

Pepperl+Fuchs Inc.

1600 Enterprise Parkway

Twinsburg, Ohio 44087

USA

Phone: +1 330 425-3555

E-mail: [sales@us.pepperl-fuchs.com](mailto:sales@us.pepperl-fuchs.com)

#### **Asia Headquarters**

Pepperl+Fuchs Pte. Ltd.

P+F Building

18 Ayer Rajah Crescent

Singapore 139942

Phone: +65 6779-9091

E-mail: [sales@sg.pepperl-fuchs.com](mailto:sales@sg.pepperl-fuchs.com)

<https://www.pepperl-fuchs.com>

## 1 Associated Documentation

The corresponding datasheets, manuals, instruction manuals, declarations of conformity, EU type examination certificates, certificates, and control drawings if applicable are an integral part of this document. You can find this information under [www.pepperl-fuchs.com](http://www.pepperl-fuchs.com).

This document does not substitute the instruction manual.

For full information on the product, refer to the instruction manual and further documentation on the Internet at [www.pepperl-fuchs.com](http://www.pepperl-fuchs.com).

This document is an integral part of the following documents:

- Manual: DOCT-8106
- Brief instructions: DOCT-8109
- Instruction manual: DOCT-8292

For specific device information such as the year of construction, scan the QR code on the device. As an alternative, enter the serial number in the serial number search at [www.pepperl-fuchs.com](http://www.pepperl-fuchs.com).

## 2 Supplementary Documentation

Information for explosion protection:

The information can be found on the Internet at [www.pepperl-fuchs.com](http://www.pepperl-fuchs.com).

## 3 Manufacturer's Certificates

### EU Declaration of Conformity

Declaration number: DOC-7442

The EU Declaration of Conformity is available on the product detail page of the devices on the internet at [www.pepperl-fuchs.com](http://www.pepperl-fuchs.com).

Enter the order designation in the search field → Select the appropriate product → Open the product detail page → Open the **Approvals+Certificates** tab.

### EU Type-Examination Certificate

Certificate number: CSANe 23ATEX1157X

List of applied standards: see EU Declaration of Conformity

### IEC Declaration of Conformity

Certificate number: IECEX CSAE 23.0044X

List of applied standards: see IECEX certificate

## 4 Manufacturer Address

Pepperl+Fuchs Group  
Lilienthalstraße 200, 68307 Mannheim, Germany  
Internet: [www.pepperl-fuchs.com](http://www.pepperl-fuchs.com)

## 5 Device Versions

Device type	Basic specifications	Optional specifications
LVL-M3	-XXXXXX-XXXXXX-XX	+XX

The X-marked letters of the type code are placeholders for versions of the device.

The following specifications reproduce an extract from the product structure and are used to assign.

### Basic specifications

Option	Type of probe
A	Compact version
B	Short tube version
C	Tube extension

Option	Housing, material
A	Single compartment, aluminum, coated
P	Single compartment, plastic

Option	Electrical connection
A	Gland M20, plastic, IP66/68, NEMA type 4X/6P
B <sup>1</sup>	Gland M20, brass nickel plated, IP66/68, NEMA type 4X/6P
F	Thread M20, IP66/68, NEMA type 4X/6P
G	Thread G1/2, IP66/68, NEMA type 4X/6P
H <sup>2</sup>	Thread NPT1/2, IP66/68, NEMA type 4X/6P
I <sup>1</sup>	Thread NPT3/4, IP66/68, NEMA type 4X/6P
M <sup>1</sup>	Plug M12, IP66/67, NEMA type 4X

<sup>1</sup> Only in connection with feature **Housing, material**, option **A**

<sup>2</sup> Only in connection with feature **Housing, material**, option **P**

Option	Electrical output
N	FEL48, 2-wire NAMUR

Option	Approval
E2	ATEX/IEC II 1/2G, 2G Ex ia IIC T6 Ga/Gb

### Optional specifications

Option	Accessory enclosed
WP <sup>1</sup>	Weather protection cover, plastic

<sup>1</sup> Only in connection with feature **Housing, material**, option **A**

## 6 Temperature Tables

### General notes

Optional specification, feature **Accessories enclosed**, option **WP**



#### Note

When using the weather protection cover: Reduce the values  $T_{amb}$  of P1, P2, P3 by 16 K.

### Description notes



#### Note

Unless otherwise indicated, the positions always refer to the basic specification.

- 1st column: basic specification, feature **Electrical output**, option **N**
- 2nd column: temperature classes T6 (85 °C) to T1 (450 °C)
- Column P1 to P5: position (temperature value) on the axes of the derating
  - $T_{amb}$ : ambient temperature in °C
  - $T_p$ : process temperature in °C

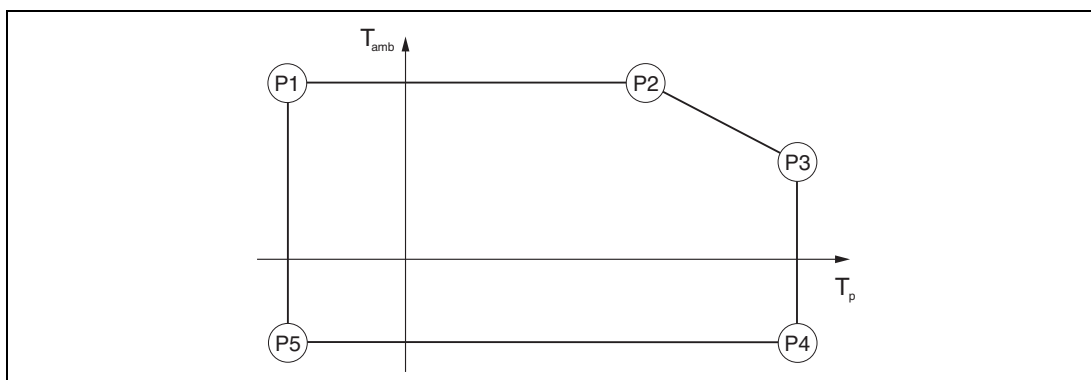


Figure 1

### Zone 0, Zone 1

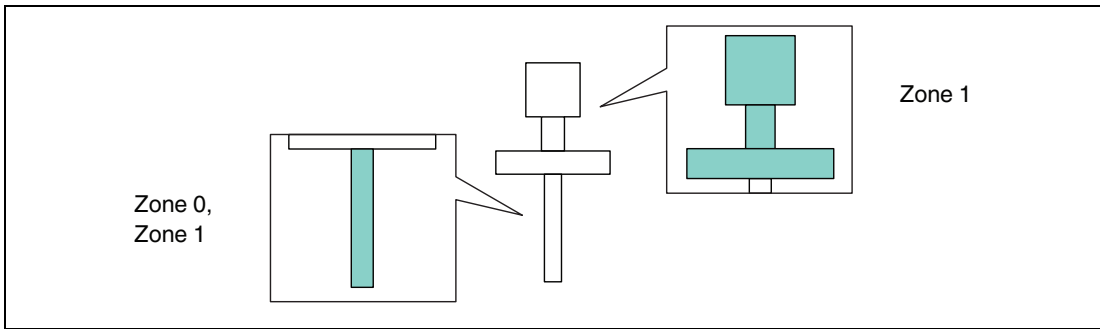


Figure 2

### Basic specification, feature Electrical output

Option N											
		P1		P2		P3		P4		P5	
		$T_p$	$T_{amb}$	$T_p$	$T_{amb}$	$T_p$	$T_{amb}$	$T_p$	$T_{amb}$	$T_p$	$T_{amb}$
	T6	-50	70	74	70	80	66	80	-40	-50	-40
	T5	-50	70	70	70	95	70	95	-40	-50	-40
	T4	-50	70	70	70	130	62	130	-40	-50	-40
	T3...T1	-50	70	70	70	150	53	150	-40	-50	-40

Table 1

## 7 Connection Data

Associated intrinsically safe power supply unit with max. electrical specifications below the characteristic values of the electronic inserts

### Basic specification, feature Electrical output

Option	Power supply circuit
N	$U_i = 16\text{ V}$ $I_i = 52\text{ mA}$ $P_i = 170\text{ mW}$ $L_i = 0$ $C_i = 30\text{ nF}$

Table 2



# Your automation, our passion.

## Explosion Protection

- Intrinsic Safety Barriers
- Signal Conditioners
- FieldConnex® Fieldbus
- Remote I/O Systems
- Electrical Ex Equipment
- Purge and Pressurization
- Industrial HMI
- Mobile Computing and Communications
- HART Interface Solutions
- Surge Protection
- Wireless Solutions
- Level Measurement

## Industrial Sensors

- Proximity Sensors
- Photoelectric Sensors
- Industrial Vision
- Ultrasonic Sensors
- Rotary Encoders
- Positioning Systems
- Inclination and Acceleration Sensors
- Fieldbus Modules
- AS-Interface
- Identification Systems
- Displays and Signal Processing
- Connectivity

### Pepperl+Fuchs Quality

Download our latest policy here:

[www.pepperl-fuchs.com/quality](http://www.pepperl-fuchs.com/quality)

