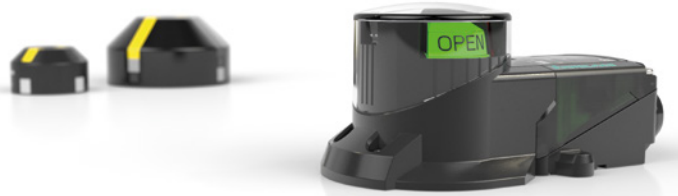


Weathering the Storm.

Outstanding performance—even
in the most extreme conditions.

F31K2 Series for Valve
Position Feedback



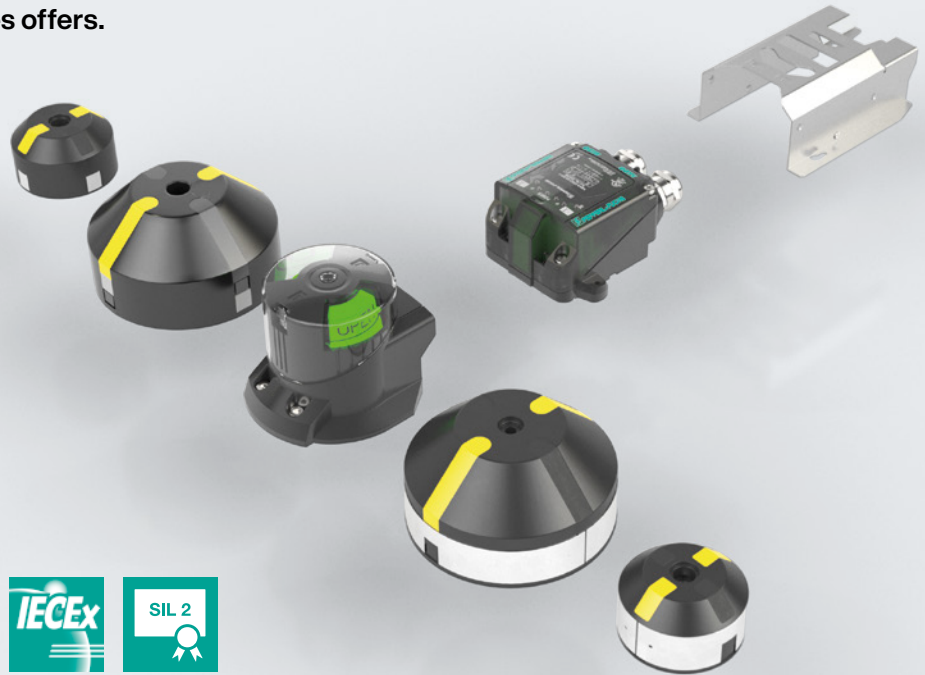
Your automation, our passion.

 **PEPPERL+FUCHS**

F31K2 Series

Extremely Robust and Particularly Durable

Reliable and convenient monitoring of the valve position, even under the most extreme environmental conditions—that is what the F31K2 sensor series offers.



Dual Inductive Sensor Technology

The functional principle is based on two inductive sensors arranged one above the other. Unlike mechanical switches, these operate without contact and are therefore maintenance-free and extremely durable. The open design with only a few components allows easy mounting directly on the actuator. The high-density housing and corrosion-free materials guarantee reliable use, even under the most adverse environmental conditions.

Highlights

- Particularly durable and maintenance-free solution for valve position feedback due to noncontact, inductive dual sensor technology
- Highly sealed and corrosion-free housing—ideally suited for extremely demanding outdoor applications
- Extended application range: 2-wire low-power variant allows easy replacement of mechanical limit switches
- IECEx and ATEX certifications for worldwide use in explosion-hazardous areas, including Ex ec/tc for Zone 2/22
- Modular design for maximum flexibility: activator variants for different actuator sizes, also with highly visible valve position indicator
- Simple, direct mounting with few parts and convenient connection due to large terminal compartment with plug-in terminals



For more information, visit
[pepperl-fuchs.com/pf-F31K2](https://www.pepperl-fuchs.com/pf-F31K2)

Modular Design for Maximum Flexibility

Depending on the requirements of the application, a choice can be made between different actuator variants. These are available in different sizes—so the right actuator is available for every actuator size. For a particularly convenient and highly visible valve position indication, the Puck+Beacon variant with open/close LED display can be selected. In addition, actuators with reversed direction of action can also be used for corresponding applications.

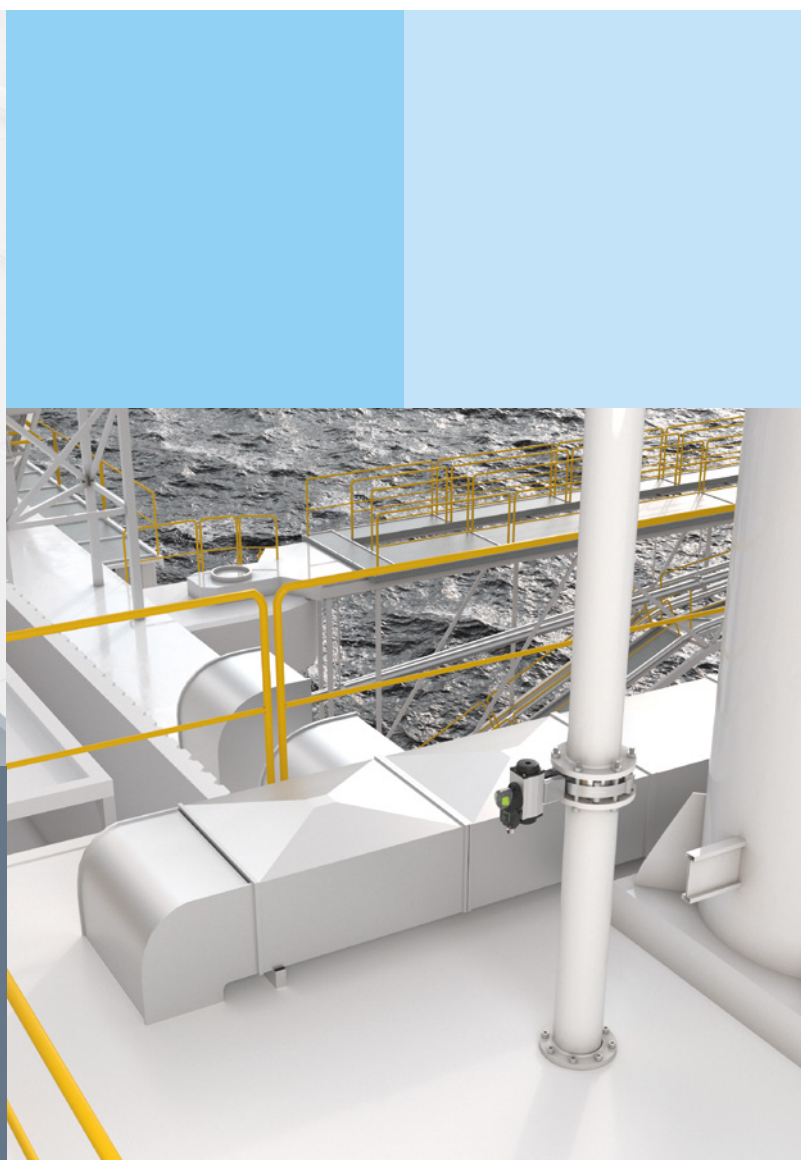
Extended Range of Applications

The sensors are also available in a wide range of electrical output variants. The 2-wire low-power variant with low residual current, for example, enables simple replacement of mechanical limit switches in existing process control systems. The NAMUR variants are ideally suited for use in safety-relevant applications. In addition, the IECEx and ATEX certified sensor variants can also be used for non-intrinsically safe applications in hazardous areas for Zone 2/22.

Technical Data

N*-F31K2*

Type of output	3-wire DC (PNP), 2-wire DC "low power" (low residual current), 2-wire NAMUR
Housing material	Glass-fiber reinforced polyester (GRP) or translucent polycarbonate (PC), aluminum
Temperature range	-40 ... +75 °C
Degree of protection	IP66, IP67, IP69
Certification	Ex i, SIL 2 (for NAMUR types) Ex ec/Ex tc (for 2-wire DC "low power" and 3-wire DC (PNP) types)



Your automation, our passion.

Explosion Protection

- Intrinsic Safety Barriers
- Signal Conditioners
- FieldConnex® Fieldbus Infrastructure
- Remote I/O Systems
- Electrical Explosion Protection Equipment
- Purge and Pressurization Systems
- HMI Systems
- Mobile Computing and Communications
- HART Interface Solutions
- Surge Protection
- Wireless Solutions
- Level Measurement

Industrial Sensors

- Proximity Sensors
- Photoelectric Sensors
- Industrial Vision
- Ultrasonic Sensors
- Rotary Encoders
- Positioning Systems
- Inclination and Acceleration Sensors
- Vibration Monitoring
- Industrial Ethernet
- AS-Interface
- IO-Link
- Identification Systems
- Displays and Signal Processing
- Connectivity

www.pepperl-fuchs.com

Subject to modifications • © Pepperl+Fuchs
Printed in Germany • Part. No. 70155616 09/22 00 • public



Pepperl+Fuchs Quality

Download our latest policy here:

www.pepperl-fuchs.com/quality