

# Insightful Solutions.

HMI Systems that perfectly fit your application.

VisuNet from Pepperl+Fuchs—  
Industrial Human Machine  
Interfaces for Process Automation.



Your automation, our passion.

 **PEPPERL+FUCHS**



VisuNet from Pepperl+Fuchs

# Industrial Human Machine Interfaces for Process Automation

VisuNet operator workstations and monitoring systems are relied upon around the world in refineries, tank terminals, petrochemical, life science, and pharmaceutical production facilities. HMIs for industrial applications such as these are subjected to moisture, temperature shifts, and the use of 24/7 operation. In addition, they need to be resistant to common chemicals and detergents. To ensure absolute reliability, VisuNet systems are built with industrial-grade components and housings made of stainless steel with special surfaces that meet GMP regulations.



## Refineries

As refineries strive to increase production in this ever-changing market, uptime, availability and safety are clear motivating factors for automation providers. Pepperl+Fuchs devices are used to simplify and optimize processes.

## Pharmaceuticals

The pharmaceutical industry relies on Pepperl+Fuchs when it comes to safety and availability for their plants. Our products have proven themselves in a wide range of applications worldwide, including batch control automation and asset management systems.





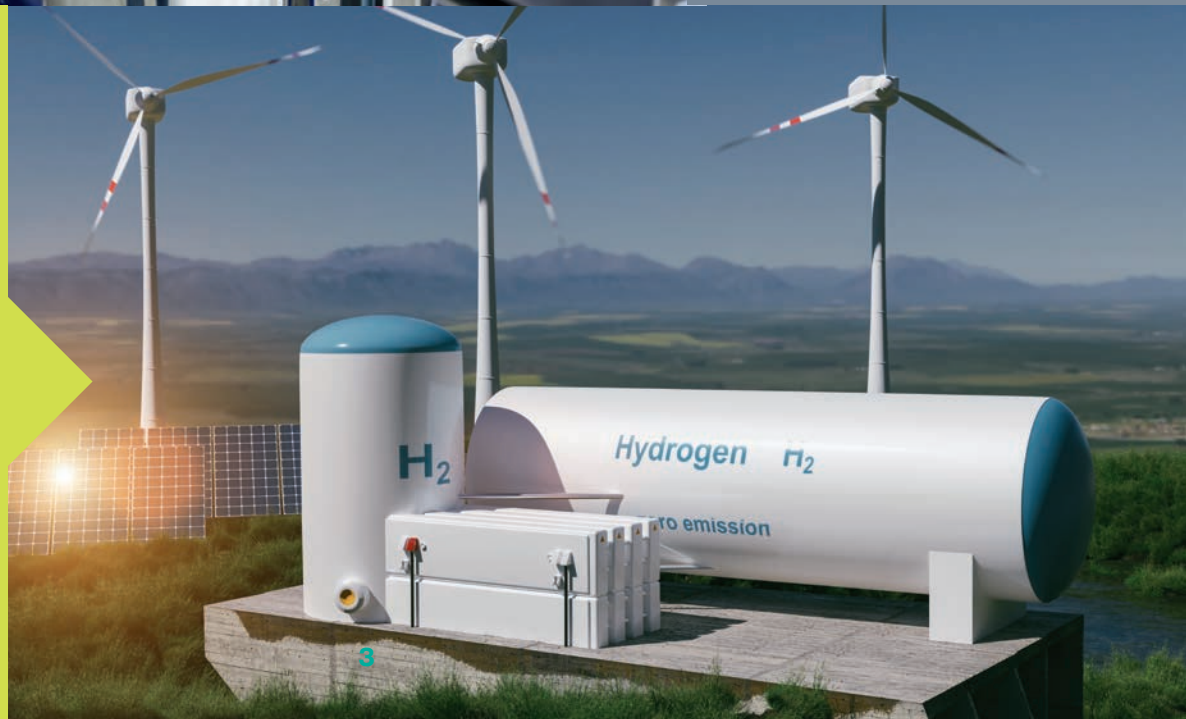


## Chemical Industry

Pepperl+Fuchs equipment is used in all major chemical companies around the world that handle hazardous or flammable materials. Our products have proven themselves in a wide range of applications globally, including emergency shutdown, fire and gas, automation, and asset management systems.

## Hydrogen

The use of hydrogen as a fuel is considered a key technology. Pepperl+Fuchs supports manufacturers along the entire value chain with innovative products and global support.



# From Shock and Vibration Resistance to Good Manufacturing Practice Cleanability Standards

The VisuNet industrial monitor portfolio offers a set of core communication technologies in a variety of housing styles—from high-performance PC workstations, direct monitors for a direct connection of the monitor to a close PC, to sleek remote monitor systems for indoor and outdoor applications. Find an industrial monitor that perfectly meets your requirements.

## VisuNet FLX—the New Modular HMI Platform

VisuNet FLX is a comprehensive range of highly flexible operator workstations and monitoring systems from Pepperl+Fuchs for ATEX/IECEX Zone 2/22 and Division 2 (as well as further global certifications), and non-hazardous areas. The new platform is tailored to the needs of the petrochemical, chemical, and pharmaceutical industries. Due to the fully modular design, HMI solutions can be configured to maximize functionality and the platform can be quickly and easily customized in the field.

## Highlights

- Modular, fan-less system
- Stainless steel and aluminum enclosure
- Clean room applicable
- Global certifications
- Field maintainable (module exchange)
- Maximized configuration and installation flexibility
- Design in accordance with GMP

For more information, visit [pepperl-fuchs.com/pf-flx](http://pepperl-fuchs.com/pf-flx)



End-to-end thin client portfolio: for indoor and outdoor applications in Zone 2/22 and Division 2



System: 21.5"  
Panel mount: 21.5", 19", 15.6"



System P1 enclosure: 0 °C ... +40 °C  
System A1 enclosure: -20 °C ... +50 °C  
Panel A enclosure: 0 °C ... +45 °C  
Panel B enclosure: -20 °C ... 55 °C





Zone 1/21, Zone 2/22  
Ask your local sales support for additional global certifications



19", 21.5"



-20 °C ... +50 °C

## VisuNet GXP

The innovative VisuNet GXP offers a compact, modular design that allows easy setup and maintenance. VisuNet GXP systems consist of three main components that can be replaced in the field: display unit, power supply unit, and computing unit (PC or RM). With a stainless steel housing, VisuNet GXP components are resistant to all chemicals and detergents commonly found in the life sciences sector—and the VisuNet GXP is one of the industry's lightest HMI for Zone 1/21 life science applications.

## Highlights

- Modular system
- Clean-room applicable
- Compact design
- Lightweight
- Field maintainable (module exchange)
- No Ex-protection housing for panel mount installation in hazardous areas required



For more information, visit  
[pepperl-fuchs.com/pf-VisuNet-GXP](http://pepperl-fuchs.com/pf-VisuNet-GXP)



# Complete Thin Client Solution from the Control Room Down to Hazardous Areas

Explosive atmospheres, harsh conditions, extreme temperatures—the process industry places special demands on people and technology. Industrial box thin clients from Pepperl+Fuchs are designed to deliver a reliable and rugged virtualization solution for the harsh conditions in industrial environments.

## BTC22 and BTC24

Engineered to withstand continuous exposure to high temperatures, shock, and vibration, the BTC22 and the BTC24 can handle the most demanding process applications. The rugged thin clients offer users maximum installation flexibility.

## Highlights

- Rugged design
- Long-term availability
- High installation flexibility
- Passive cooling design; 24/7
- Pre-installed VisuNet RM Shell thin client firmware
- Alternate configuration options available as PC with IGEL OS 12 or ThinManager® Ready



BTC22: up to 2 × 4K  
BTC24: up to 4 × 4K



Industrial temperature range: 0 ... 55 °C  
Standard temperature range: -20 °C ... +60 °C



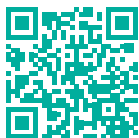
Desktop, Wall, Din Rail, or VESA Mounting



### **Engineered for Reliability**

Pepperl+Fuchs offers industrial box thin clients that are tailored to industrial environments. They provide the latest technology inside compact, ruggedized aluminum housings that can withstand the stress of 24/7 operation in challenging ambient conditions. Industrial box thin clients meet performance requirements for virtualized or web-based infrastructure and support centralized management software for thin client architectures.

Our thin clients are complemented by a range of industrial box PCs, which offer a flexible solution with outstanding cost-to-performance ratio. Equipped with 7th Generation Intel® Celeron and i5 (Kaby Lake) processors as well as extended RAM configurations, these box PCs are ideally suited for applications that require more computing power.



For more information, visit  
[pepperl-fuchs.com/pf-btc](https://pepperl-fuchs.com/pf-btc)

# VisuNet RM Shell and VisuNet Control Center—Smart HMI Solutions for Industry 4.0

## VisuNet RM Shell

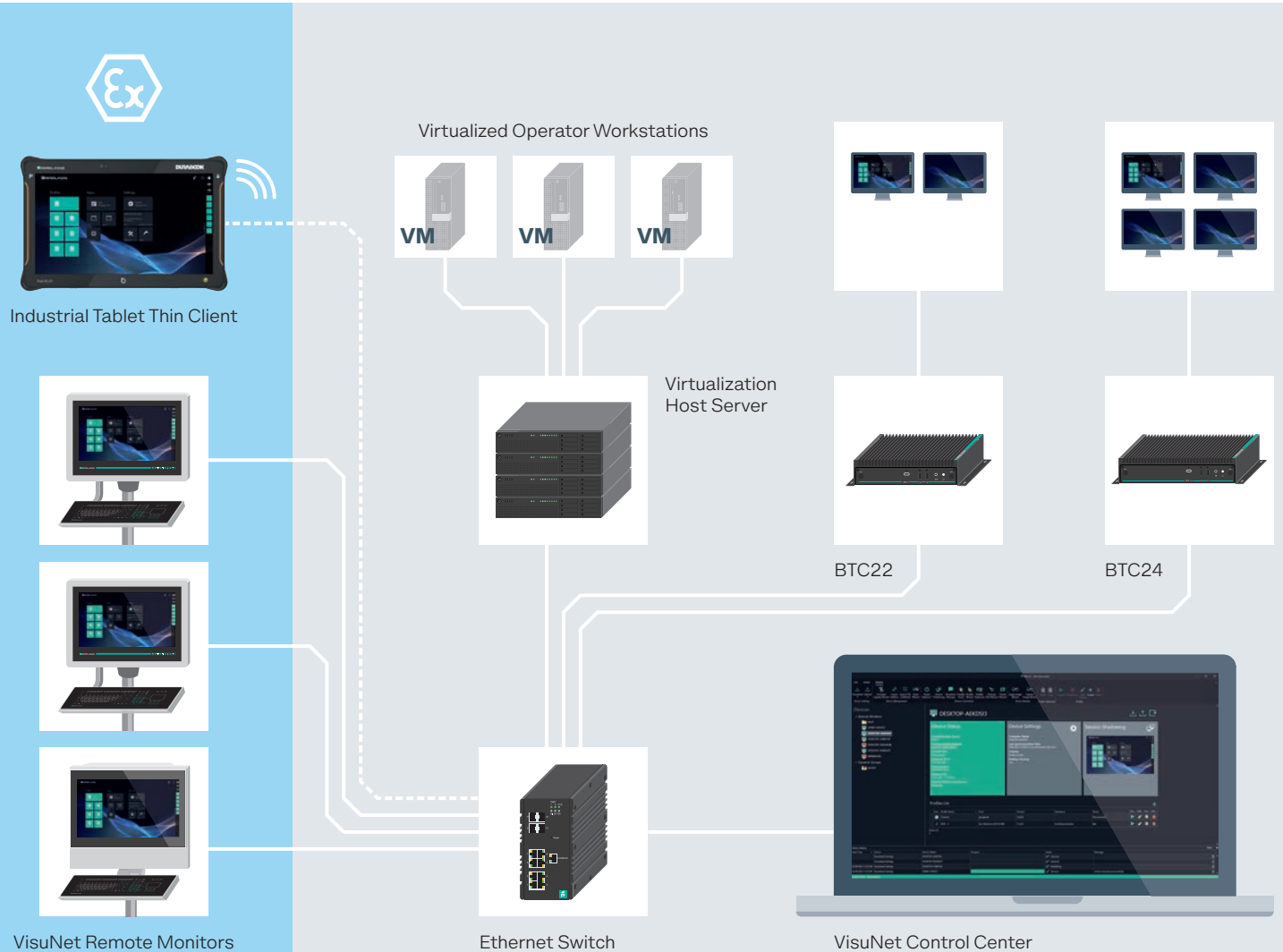
VisuNet RM Shell is an innovative thin client firmware preinstalled on every Pepperl+Fuchs VisuNet Remote Monitor (RM) and box thin client. It is engineered by Pepperl+Fuchs to simplify thin client setup and operation of virtualized and conventional workstation-based process control systems. VisuNet RM Shell replaces the Windows® desktop and reduces the user interface to critical system functions.



For more information, visit [pepperl-fuchs.com/pf-rm-shell](http://pepperl-fuchs.com/pf-rm-shell)

Predefined user roles (administrator, engineer, and operator) provide tailored information access to different authorization levels. An app concept allows integration of third-party remote protocols and applications—enabling OEMs to integrate their own apps and adapt VisuNet RMs to their own automation infrastructure.

Usability meets security: Features such as a universal write filter (UWF), USB lockdown, and a built-in Ethernet firewall make VisuNet RMs one of the most secured HMI solutions on the market.





## VisuNet Control Center

VisuNet Control Center is an add-on tool for users of VisuNet RM Shell. It allows administrators to efficiently manage all HMI systems with VisuNet RM Shell from a central location. There is no need to enter hazardous areas or clean rooms to set up and maintain a remote monitor or box thin client, saving time and money.



For more information, visit  
[pepperl-fuchs.com/pf-visunet-cc](http://pepperl-fuchs.com/pf-visunet-cc)



### Rm Shell to Go

The industrial tablet thin client extends the Pepperl+Fuchs thin client portfolio with a mobile thin client device. It is based on the ruggedized Pad-Ex tablet from the Pepperl+Fuchs brand ecom, features VisuNet RM Shell as firmware, and opens up many advantages in the field.



[pepperl-fuchs.com/pf-hmi](http://pepperl-fuchs.com/pf-hmi)

### Update Service

As a user of our Pepperl+Fuchs thin client software, you can benefit from our new service. Let us inform you as soon as a new software update is available!



Latest software and security updates:  
[pepperl-fuchs.com/shell6-updates](http://pepperl-fuchs.com/shell6-updates)

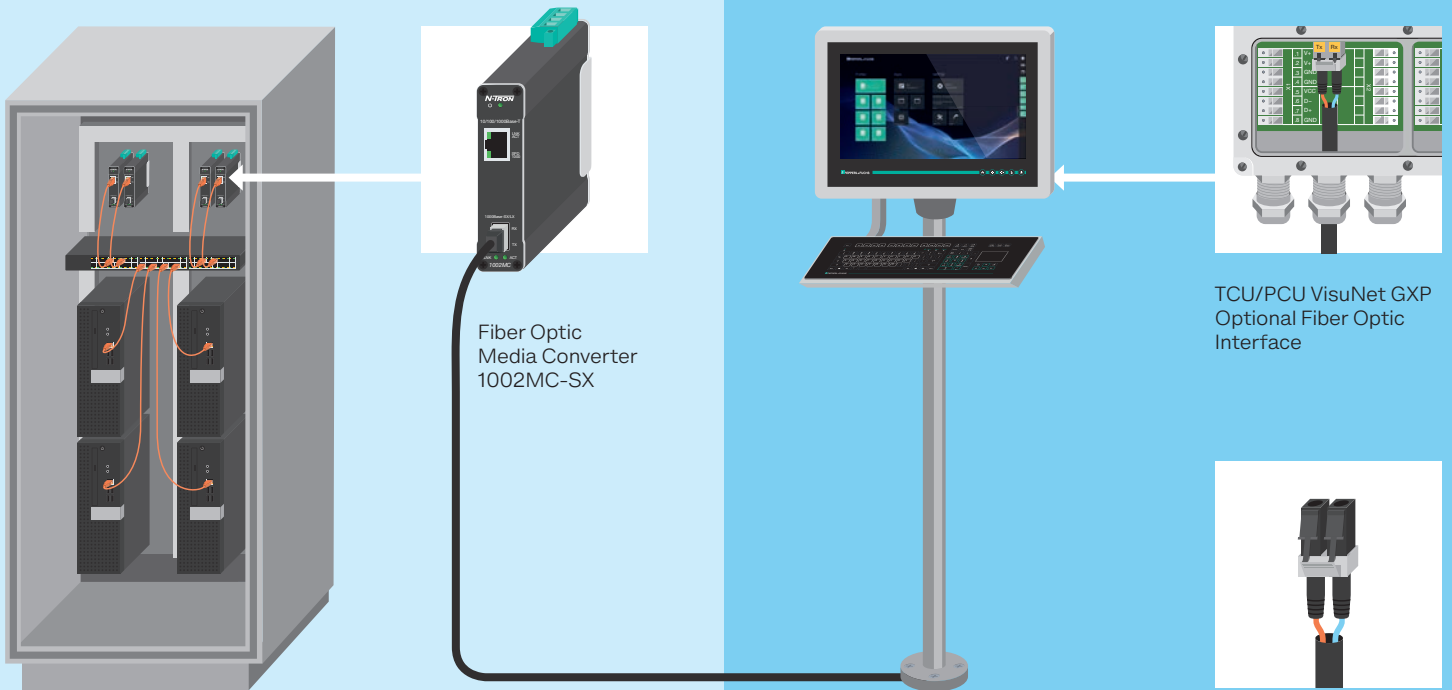
# Peripherals for Industrial Monitors, Operator Workstations, and Operator Panels

An extensive range of peripherals complements VisuNet industrial monitors and box thin clients. Devices such as pedestals, keyboards, network components, barcode and RFID readers allow you to optimize VisuNet operator workstations and operator panels for a specific application and further expand your process. A wide variety of accessories and peripherals are tested and qualified by Pepperl+Fuchs for easy and fast plug-and-play installation.



## Sample installation Fiber Optic Multimode

**Ex** Zone 1/21



Fiber Optic Media Converter 1002MC-SX

TCU/PCU VisuNet GXP  
Optional Fiber Optic Interface

Fiber Optic Multimode Cable (up to 550 m distance)  
Minimum cable requirement: OM2 (50/125 μm)

**Fiber Optic Multimode Breakout Cable DATL-FO-MM-\***  
Military-grade fiber optic multimode cable for easy connectivity of Pepperl+Fuchs Thin Client/PC units, available with duplex LC to LC or LC to SC connectors, max. length 1.5 m.



# Get the Exact HMI for Your Needs

Off-the-shelf products do not always meet the exact requirements for every application. VisuNet engineered HMI solutions are a simple way to get the exact HMI you need. Whether you need a remote monitor or an intrinsically safe panel PC, Pepperl+Fuchs can design a solution that fits your application and budget.

Our standards for quality, craftsmanship, and value, along with our hazardous location expertise, make Pepperl+Fuchs the right choice for your next industrial HMI.

Talk with a Pepperl+Fuchs HMI design specialist to discuss your requirements and modifications.

Engineered solutions offer many benefits:

- HMI design specialist will design a custom solution based on your requirements
- Comprehensive after-sales support
- Cost saving by customizing standard solutions
- Proposal and quote in just a few business days



For more information, visit  
[pepperl-fuchs.com/pf-hmi](http://pepperl-fuchs.com/pf-hmi)

# Your automation, our passion.

- Industrial Sensors
- Industrial Communication and Interfaces
- Enterprise Mobility
- Hazardous Area Products and Solutions

[www.pepperl-fuchs.com](http://www.pepperl-fuchs.com)

Subject to modifications • © Pepperl+Fuchs  
Printed in USA • Part. No. 70187632 11/24 00



**Pepperl+Fuchs Quality**

Download our latest policy here:

[www.pepperl-fuchs.com/quality](http://www.pepperl-fuchs.com/quality)