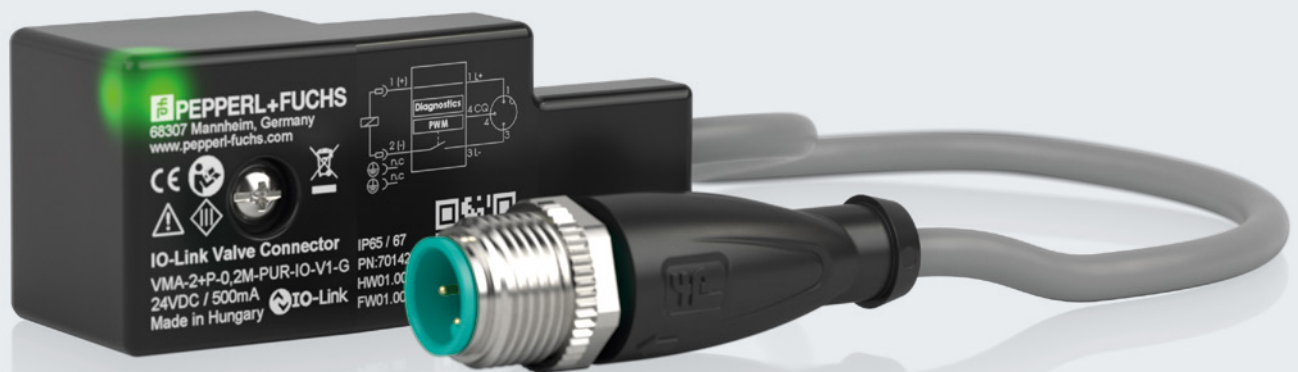


Making Valves Smart.

 **IO-Link**

IO-Link Valve Connector

Improve plant availability, reduce energy costs—with invaluable data from your application.



Your automation, our passion.

 **PEPPERL+FUCHS**

Comprehensive Diagnostic Data for Reliable Condition Monitoring

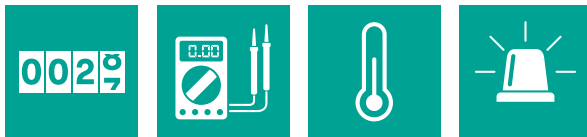
The innovative Form A valve connector with IO-Link interface enables reliable condition monitoring of the connected solenoid valve. Critical machine conditions can be quickly detected and counteracted if necessary.

The valve connector can be easily connected to an IO-Link network via the pre-assembled M12 connector. In this way, numerous digital diagnostic data can be output, which allow the status of the connected valve to be determined reliably:

- Current switching status
- Switching cycle counter
- Voltage and current measurement
- DC resistance of the valve coil
- Temperature
- Valve motion detection

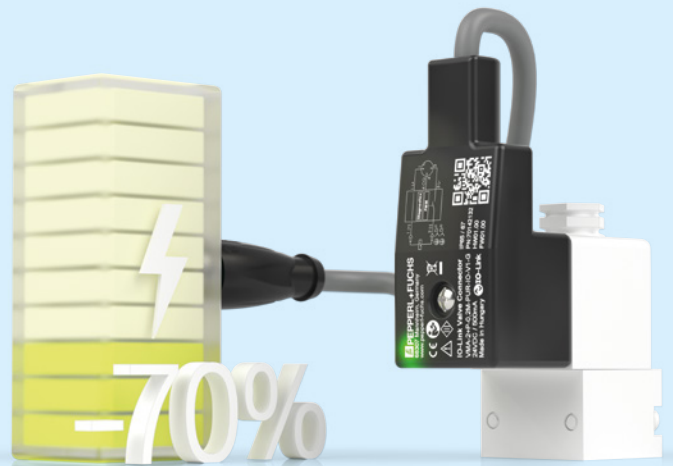
The alarm function in the event of limit values being exceeded for the respective values enables fast reaction times in the event of maintenance, therefore reducing downtimes to a minimum.

The event-related RGB LED additionally ensures quick and easy identification of faulty valves directly in the plant.



Energy-Saving Pulse Width Modulation Mode (PWM)

In PWM mode, the average current required by the connected valve is reduced, thereby significantly limiting the temperature increase. This not only increases the valve service life, but also allows an overall energy saving of up to 70 %.



For more information, visit
[pepperl-fuchs.com/pf-smart-valve-connector](https://www.pepperl-fuchs.com/pf-smart-valve-connector)