

# The Key to Digitalization.

Pioneering Technology for Mobile Workers in a 10", 5G Android Tablet.

Tab-Ex® 04 Pro



The image shows Tab-Ex 04 Pro D2

Your automation, our passion.

 **PEPPERL+FUCHS**



**Use Synergies. Bundling Know-How for Mobility Beyond Company Boundaries.**

Enterprise Mobility Solutions from Pepperl+Fuchs are geared towards the requests and needs of our customers and pave the way for future-oriented digitalization. They offer a competitive solution concept and portfolio from a single source to enable the next level of enterprise-centric digitalization. This opens up completely new possibilities and increases the safety, efficiency, and transparency of operations in both conventional and IIoT applications—driving the value of connected solutions for mobile employees and digital transformation and thereby Pepperl+Fuchs Enterprise Mobility.

Tab-Ex 04 Pro

# **Digitalizing Hazardous Areas. Enabling Connectivity. Enhancing Enterprise Mobility.**

**The Pepperl+Fuchs brand ecom is a leading manufacturer of comprehensive solutions for mobile computing and industrial communication in potentially explosive atmospheres.**

The company has played a key role in pioneering explosion protection for mobile devices. The company has demonstrated its technological expertise with a number of innovations and tried-and-tested mobile solutions—from hazardous area-rated smartphones, cell phones, and tablets to accessories such as wireless headsets and barcode scanners with more than 500,000 devices in use worldwide. The new Digital Products and Services platform completes the portfolio, offering automated staging during device production, mobile device management, and device analytics; the platform can also be used as a full-fledged enterprise mobility management system.

Every product solution combines uncompromising security with the highest level of functionality and includes all necessary approvals and certificates for worldwide use. The global sales and support network of Pepperl+Fuchs in more than 80 countries with its service centers completes the range of products.

Customers around the world know the Pepperl+Fuchs Group as a pioneer and innovator in electrical explosion protection and sensor technology. Building on decades of experience and technical leadership, the company develops components and solutions tailored to the needs of its customers.

For more information about Pepperl+Fuchs and ecom, visit:  
[ecom-ex.com](http://ecom-ex.com) and [pepperl-fuchs.com](http://pepperl-fuchs.com)

# High Security Standards, Complete Protection

By combining Samsung Knox with the Android operating system and 5G, the Tab-Ex 04 Pro from Pepperl+Fuchs ensures that company data and processes are secure. The multilayered security mechanisms of the Knox platform work together to protect against viruses, malware, and similar threats. For additional security and convenience, the device offers biometric authentication via facial recognition and a fingerprint scanner (only applies to the D2 version).

### Hazardous Area Certification

- cSGSUS
- ATEX/IECEX
- Class I, Division 2 Group A-D T5

### Operating System

- Android™

### Memory

- 4 GB RAM/64 GB Storage<sup>1</sup>
- 6 GB RAM/128 GB Storage

### Samsung DeX

- Connect to keyboard, mouse, and monitor for a desktop-like experience

### Dedicated Keys

- User programmable buttons (alarm key, camera, etc.)

### Ports

- Pogo pin for power supply and data transmission
- USB-C



The image shows Tab-Ex 04 Pro DZ2

<sup>1</sup>For Canada, only a 4 GB/64 GB LTE model is available.

### Two Cameras

- 13 MP camera with autofocus and LED flash + 8 MP camera

### Power

- Powerful replaceable battery (7600 mAh)

### Extended Temperature Range

- -20 °C ... +50 °C

### Connectivity

- Wi-Fi standard 802.11 a/b/g/n/ac
- Wi-Fi 6; 2 × 2
- MIMO Bluetooth® 5.2
- B48 (US model only)
- 4G LTE and 5G available on WWAN models only<sup>1</sup>

### Biometric Authentication

- Fingerprint scanner for Division 2



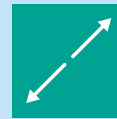
World's first 10" 5G capable Android tablet for hazardous areas



Ultra-rugged 10" multitouch display can be operated with gloves



Latest Android™ operating system: quick, safe, and efficient



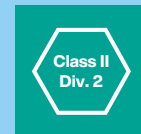
The wide screen is ideal for web-based applications



Connect a keyboard, mouse, and monitor via Samsung DeX Mode for a desktop-like experience



Digital Products and Services provide a ready-to-use service that ensures quality and security



made with  
**Qualcomm**  
Technologies

# Smart, Safe, Powerful

Equipped with 5G and Wi-Fi® 6, the Tab-Ex 04 Pro sets new standards for flexible deployment in public and private networks of mobile network providers or the companies themselves. This provides users at company locations around the globe with state-of-the-art communication and collaboration capabilities through fast and secure transmission of large volumes of data: from remote support to video conferencing, digital radio communication with minimal latency and combination with an extensive range of peripheral devices.



### Safety:

Combining Samsung Knox with Android operating system ensures that company data and processes are secure



### Reliable partnership:

Secure supply chain and fast delivery directly from stock due to combined expertise within the Pepperl+Fuchs Group



### Global service and support:

International sales specialists and application engineers in over 80 countries, combined with innovative solutions and service concepts, and a three-year service contract



### Network flexibility and operator compatibility:

Broad range of wireless carrier certifications and network approvals for global deployment



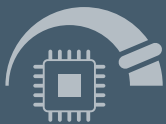
### Convenient operation in the field:

User-friendly product and interface design for an exceptional user experience



### Investment and IT security:

Android Enterprise Recommended certification guarantees Android security patches and upgrade options



### High performance:

5G functionality and Qualcomm processor provide security and reliability

- High data throughput, low latency
- Protection of sensitive corporate data through particularly secure and dedicated 5G campus networks



### Samsung DeX Mode:

For a desktop-like experience



### Improved business processes:

Tailored to the wide range of software applications and application fields such as communication, digital workflows and work order management, operational safety, or augmented reality

# Cellular Technology

5G technology represents a revolutionary leap forward in connectivity by enabling lightning-fast downloads, seamless streaming, and supporting emerging technologies such as augmented reality and the Internet of Things (IoT). It holds immense potential for industries and makes Tab-Ex 04 Pro ideally suited for use in maintenance and servicing work.

**There are three different types of 5G network technologies:**

### Public networks

These are the familiar, traditional cellular networks. Many public networks have been supporting 4G LTE for a while and are now supporting 5G to further improve data throughput, low latency, and a better overall experience. The Tab-Ex 04 Pro is ready to make use of this enhanced capability of 5G on a number of public networks.

### Private/campus networks

These networks are structurally similar to the public networks with some differences. One of these differences is the RF bands that it operates on and who can access these networks. Depending on how the network is structured, the Tab-Ex 04 Pro can be used to access a company's own private and secure network on 4G and 5G bands including the CBRS 4G LTE band 48. In addition to a much wider area of coverage than a Wi-Fi network can provide, a private cellular network can provide enhanced security protecting sensitive data.

### Network slicing

While supported to some extent in 4G, 5G adds many advantages and abilities that 4G is not able to support. In a 5G environment, network slicing is a method of using a common physical infrastructure to support multiple virtual and independent networks. This allocation can be adjusted depending on the needs of the application, allowing for better control of the network and a better experience with a given amount of RF bandwidth. Each virtual network can have its own requirements, quality of service (QoS), security and latency requirements, all optimized for the function of the virtual network.

### Advantages

- Highest security and reliability for users
- High data throughput with low latency
- Precise localization of objects in the field



Android Tab-Ex 04 Pro

# The World's First 10", 5G Android Tablet for Hazardous Areas

The Tab-Ex 04 Pro expands the Tab-Ex series as the world's first and only 10-inch, 5G Android tablet. The rugged, highly secure tablet is based on Samsung's state-of-the-art Galaxy Tab Active4 Pro and comes in a slim and lightweight design. The tablet's 10-inch screen is ideal for demanding applications. The Samsung DeX function provides an operating mode that is more like a standard desktop mode. Additional accessories, peripherals, digital products, and services ensure superior flexibility.





## High Performance. Optimized User Experience Design.

The new 10" Android tablet features a slim and lightweight design. The practical 10-inch widescreen is made for demanding applications or web-based content and can be operated with gloves and the Samsung S Pen.

Designed for use in temperatures from  $-20^{\circ}\text{C}$  to  $+50^{\circ}\text{C}$ , it is a proven product for industrial and harsh environments and stands for a long-term strategic partnership with Samsung.



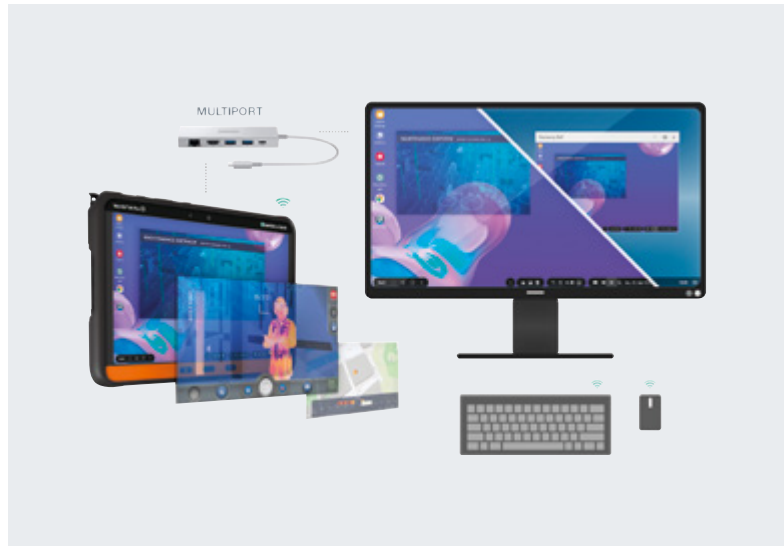
## Cutting-Edge Technology for Industry 4.0.

With the largest display in its class, it is ideal for viewing and interacting with web-based and augmented reality content and apps, even in hazardous areas. A Qualcomm processor enables high data throughput and low latency. Sensitive corporate data can be protected by highly secure and dedicated 4G LTE and 5G campus networks.



## Impressive Performance, Ideal for Mobile Workers.

Via Samsung DeX Mode, the tablet can be quickly and easily connected to a keyboard, mouse, and monitor in the office, transforming the tablet into a practical, user-friendly desktop-like computer. Charging and data transfer take place via a pogo pin connector. Google ARCore™ is used to implement important augmented reality applications, such as remote support and training, and tailor-made tools for predictive maintenance.



# Innovative Solutions from a Single Source

Pepperl+Fuchs offers a range of coordinated peripherals, accessories, and software solutions as an ideal complement to the Tab-Ex 04 Pro Series.



## Applications 4.0

- Inspection/maintenance
- Asset management/tracking
- Collaborative working
- Scanning/auto ID
- Process automation/operations
- Lone worker protection/localization (GeolP)
- Engineering/installation
- Augmented reality (AR)
- Security/safety
- Push-to-Talk over cellular (PTToC)



## Software

- User management
- Customized roles and rights
- Android Enterprise Recommended (AER)
- Android zero-touch
- Kiosk mode
- APKs
- API/3rd party



## Hardware

### Peripherals

- Scanner
- Camera
- Headset

### Certification

- Ex certifications
- Regulatory
- Wireless certifications

### Accessories

- Desktop charger/docking
- Spare battery
- Case
- Cradles



## Safety

- Mobile worker
- Assets
- Data



## Support

- Sales and application engineering
- Service level agreements
- Security patches
- Software updates



## Digital Products and Services

- Preconfiguration/staging
- Mobile device management (over-the-air)
- Device analytics

## Digital Products and Services

Digital Products and Services is a solution that combines automated staging, mobile device management, and device analytics. It can also be used as a full-fledged enterprise mobility management system if desired.

At the customer's request, the mobile devices can ship from the factory with predefined custom configurations such as security settings, applications, and wireless setup. This allows devices to be used anywhere in the world immediately upon delivery.

The devices can be managed via the online platform and updated remotely at any time during operation without having to be sent to local IT staff or the head office.

Cloud servers hosted in Germany meet the highest data protection standards and guarantee high data availability and security.

One-time staging and enrolling can also be done internally via production servers. If desired, device diagnostics and analytics can collect real-time operational data and fault analyses to continuously monitor device status and fix malfunctions preventively or immediately.

Additionally, the platform analyzes historical data to detect critical software events, installations, and other safety-critical processes. A statistical accumulation of events can be used to establish correlations and causalities between software errors, geographical data, and Wi-Fi coverage, for example.

Digital Products and Services is a ready-to-use service that ensures quality and security for all devices. This saves time and valuable resources.

For more Information, visit  
[pepperl-fuchs.com/pf-tab-ex](https://pepperl-fuchs.com/pf-tab-ex)



### Staging and Enrolling

eCSL—Custom Service Load

- Custom device preconfiguration
- Delivered ready to use



Configuring ... 65 % complete



Upload complete



Configuring ... 27 % complete

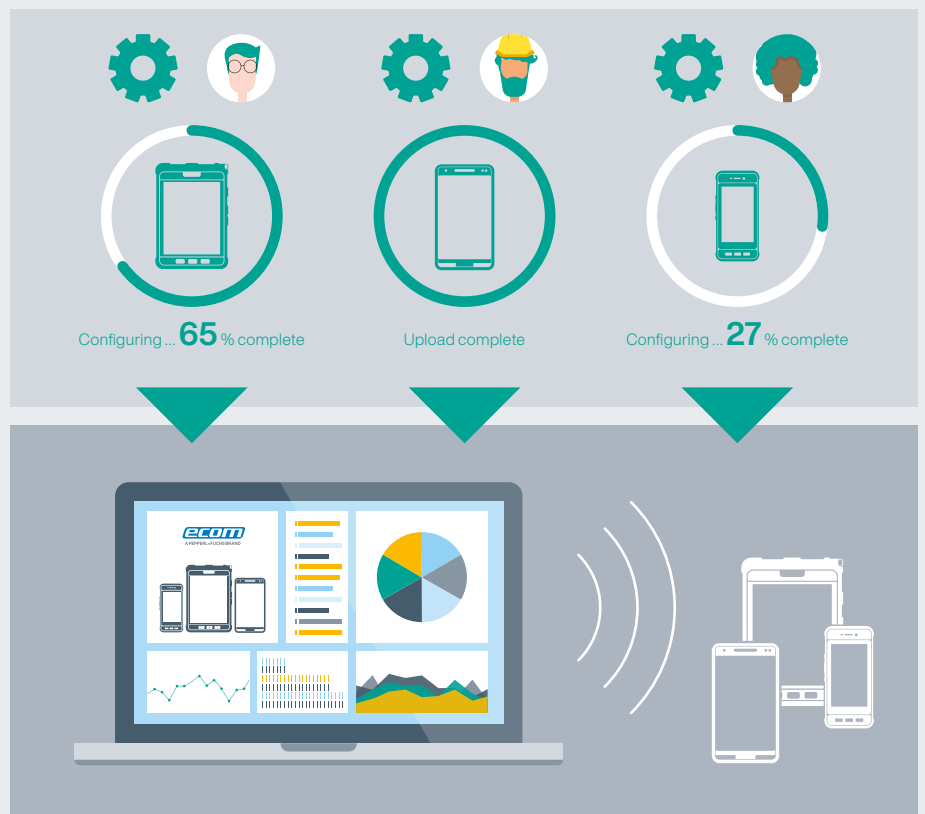
### Configuring and Management

eMDM—Mobile Device Management

- Update devices around the world simultaneously

### Device Diagnostics

- Analytics help avoid problems and correct errors



# Your automation, our passion.

- **Enterprise Mobility**
- **Industrial Communication and Interfaces**
- **Industrial Sensors**
- **Hazardous Area Products and Solutions**

[www.pepperl-fuchs.com](http://www.pepperl-fuchs.com)

Subject to modifications • © Pepperl+Fuchs  
Printed in Germany • Part. No. 70176841 02/24 00 • public



**Pepperl+Fuchs Quality**

Download our latest policy here:

[www.pepperl-fuchs.com/quality](http://www.pepperl-fuchs.com/quality)