

# The Key to Digitalization

Pioneering Technology for Mobile Workers in a 10", 5G Android Tablet

Tab-Ex® 04 Pro D2



Your automation, our passion.

 **PEPPERL+FUCHS**

# The World's First 10", 5G Android Tablet for Hazardous Areas

The Tab-Ex 04 Pro D2 expands the Tab-Ex Pro series as the world's first and only 10-inch, 5G Android tablet. The rugged, highly secure tablet is based on Samsung's state-of-the-art Galaxy Tab Active4 Pro and comes in a slim and lightweight design. The tablet's 10-inch screen is ideal for demanding applications. The Samsung DeX function provides an operating mode that is more like a standard desktop mode. Additional accessories, peripherals, digital products, and services ensure superior flexibility.



## High Performance. Optimized User Experience Design.

The new 10" Android tablet features a slim and lightweight design. The practical 10-inch widescreen is made for demanding applications or web-based content and can be operated with gloves and the Samsung S Pen.

Designed for use in temperatures from  $-20\text{ }^{\circ}\text{C}$  to  $+50\text{ }^{\circ}\text{C}$ , it is a proven product for industrial and harsh environments and stands for a long-term strategic partnership with Samsung.



## Cutting-Edge Technology for Industry 4.0.

With the largest display in its class, it is ideal for viewing and interacting with web-based and augmented reality content and apps, even in hazardous areas. A Qualcomm processor enables high data throughput and low latency. Sensitive corporate data can be protected by highly secure and dedicated 4G LTE and 5G campus networks.

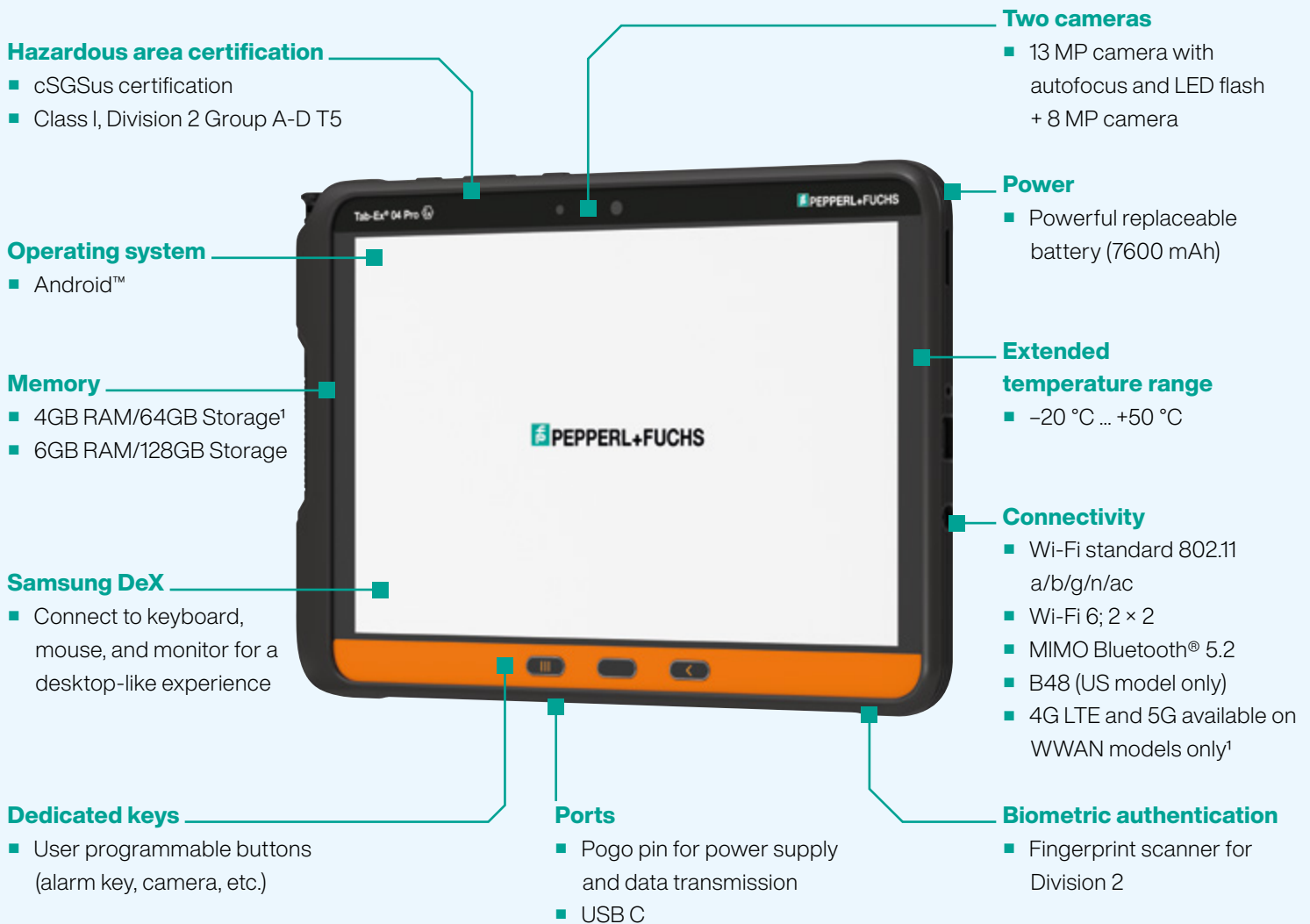








## Impressive Performance, Ideal for Mobile Workers.

Via Samsung DeX Mode, the tablet can be quickly and easily connected to a keyboard, mouse, and monitor in the office, transforming the tablet into a practical, user-friendly desktop computer. Charging and data transfer take place via a pogo pin connector. Google ARCore™ is used to implement important augmented reality applications, such as remote support and training, and tailor-made tools for predictive maintenance.

# High Security Standards, Complete Protection

By combining Samsung Knox with the Android operating system and 5G, the Tab-Ex 04 Pro from Pepperl+Fuchs ensures that company data and processes are secure. The multilayered security mechanisms of the Knox platform work together to protect against viruses, malware, and similar threats. For additional security and convenience, the device offers biometric authentication via facial recognition and a fingerprint scanner (only applies to the D2 version).



 <p>World's first 10" 5G capable Android tablet for hazardous areas</p>	 <p>Latest Android™ operating system: quick, safe, and efficient</p>	 <p>Connect a keyboard, mouse, and monitor via Samsung DeX Mode for a desktop-like experience</p>
 <p>Ultra-rugged 10" multitouch display can be operated with gloves</p>	 <p>The wide screen is ideal for web-based applications</p>	 <p>Digital Products and Services provide a ready-to-use service that ensures quality and security</p>

<sup>1</sup>For Canada, only a 4GB/64GB LTE model is available.

# Innovative Solutions from a Single Source

Pepperl+Fuchs offers a range of coordinated peripherals, accessories, and software solutions as an ideal complement to the Tab-Ex 04 Pro Series.



## Applications 4.0

- Inspection/maintenance
- Asset management/tracking
- Collaborative working
- Scanning/auto ID
- Process automation/operations
- Lone worker protection/localization (GeolP)
- Engineering/installation
- Augmented reality (AR)
- Security/safety
- Push-to-Talk over cellular (PTToC)



## Software

- User management
- Customized roles and rights
- Android Enterprise Recommended (AER)
- Android zero-touch
- Kiosk mode
- APKs
- API/3rd party



## Hardware

### Peripherals

- Scanner
- Camera
- Headset

### Certification

- Ex certifications
- Regulatory
- Wireless certifications

### Accessories

- Desktop charger/docking
- Spare battery
- Case
- Cradles



## Safety

- Mobile worker
- Assets
- Data



## Support

- Sales and application engineering
- Service level agreements
- Security patches
- Software updates



## Digital Products and Services

- Preconfiguration/staging
- Mobile device management (over-the-air)
- Device analytics

## Digital Products and Services

Digital Products and Services is a solution that combines automated staging, mobile device management, and device analytics. It can also be used as a full-fledged enterprise mobility management system if desired.

At the customer's request, the mobile devices can ship from the factory with predefined custom configurations such as security settings, applications, and wireless setup. This allows devices to be used anywhere in the world immediately upon delivery.

The devices can be managed via the online platform and updated remotely at any time during operation without having to be sent to local IT staff or the head office.

Cloud servers hosted in Germany meet the highest data protection standards and guarantee high data availability and security.

One-time staging and enrolling can also be done internally via production servers. If desired, device diagnostics and analytics can collect real-time operational data and fault analyses to continuously monitor device status and fix malfunctions preventively or immediately.

Additionally, the platform analyzes historical data to detect critical software events, installations, and other safety-critical processes. A statistical accumulation of events can be used to establish correlations and causalities between software errors, geographical data, and Wi-Fi coverage, for example.

Digital Products and Services is a ready-to-use service that ensures quality and security for all devices. This saves time and valuable resources.

### Staging and Enrolling

#### eCSL—Custom Service Load

- Custom device preconfiguration
- Delivered ready to use

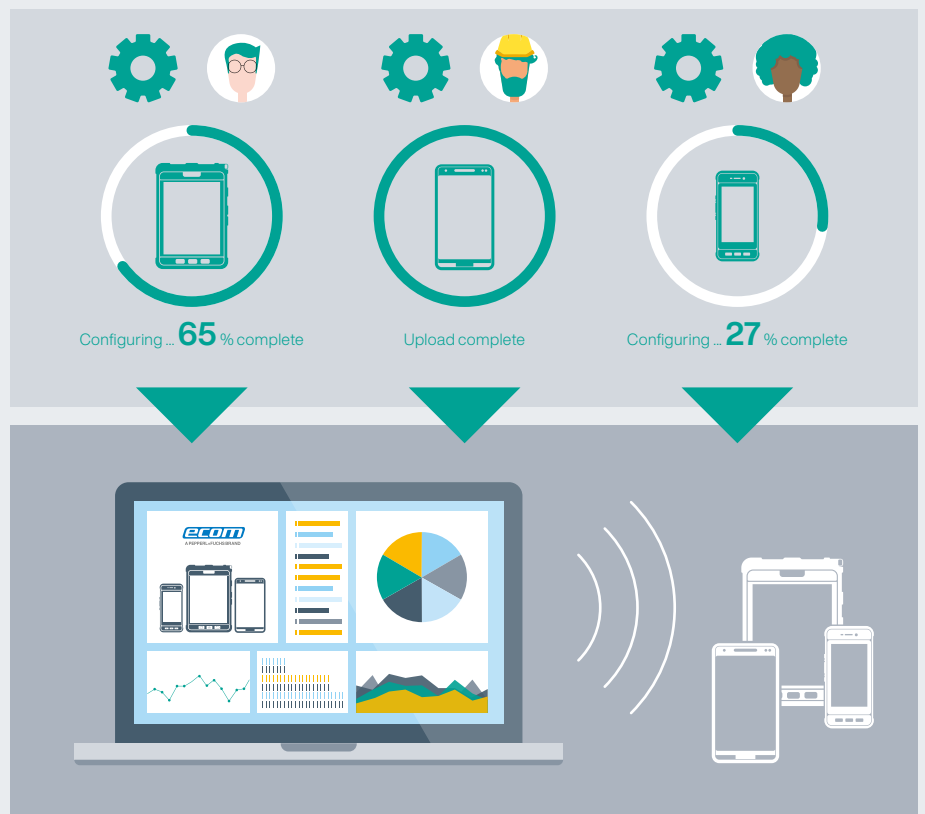
### Configuring and Management

#### eMDM—Mobile Device Management

- Update devices around the world simultaneously

### Device Diagnostics

- Analytics help avoid problems and correct errors





# Cellular Technology

5G technology represents a revolutionary leap forward in connectivity by enabling lightning-fast downloads, seamless streaming, and supporting emerging technologies such as augmented reality and the Internet of Things (IoT). It holds immense potential for industries and makes the hazardous area-rated Smart-Ex 03 ideally suited for use in maintenance and servicing work.

**There are three different types of 5G network technologies:**

### Public networks

These are the familiar, traditional cellular networks. Many public networks have been supporting 4G LTE for a while and are now supporting 5G to further improve data throughput, low latency, and a better overall experience. The Smart-Ex 03 is ready to make use of this enhanced capability of 5G on a number of public networks.

### Private/campus networks

These networks are structurally similar to the public networks with some differences. One of these differences is the RF bands that it operates on and who can access these networks. Depending on how the network is structured, the Smart-Ex 03 can be used to access a company's own private and secure network on 4G and 5G bands including the CBRS 4G LTE band 48 and 5G n48. In addition to a much wider area of coverage than a Wi-Fi network can provide, a private cellular network can provide enhanced security protecting sensitive data.

### Network slicing

While supported to some extent in 4G, 5G adds many advantages and abilities that 4G is not able to support. In a 5G environment, network slicing is a method of using a common physical infrastructure to support multiple virtual and independent networks. This allocation can be adjusted depending on the needs of the application, allowing for better control of the network and a better experience with a given amount of RF bandwidth. Each virtual network can have its own requirements, quality of service (QoS), security and latency requirements, all optimized for the function of the virtual network.

### Advantages

- Highest security and reliability for users
- High data throughput with low latency
- Precise localization of objects in the field



ecom

# Digitalizing Hazardous Areas. Enabling Connectivity. Enhancing Enterprise Mobility.



**The Pepperl+Fuchs brand ecom is a leading manufacturer of comprehensive solutions for mobile computing and industrial communication in potentially explosive atmospheres.**

Since 1986, ecom has played a key role in pioneering explosion protection for mobile devices. The company has demonstrated its technological expertise with a number of innovations and tried-and-tested mobile solutions—from hazardous area-rated smartphones, cell phones, and tablets to accessories such as wireless headsets and barcode scanners with more than 500,000 devices in use worldwide. The new ecom Digital Products and Services platform completes the portfolio, offering automated staging during device production, mobile device management, and device analytics; the platform can also be used as a full-fledged enterprise mobility management system.

Every ecom solution combines uncompromising security with the highest level of functionality and includes all necessary approvals and certificates for worldwide use. The global sales and support network of Pepperl+Fuchs in more than 80 countries with its service centers completes the range of products.

Customers around the world know the Pepperl+Fuchs Group as a pioneer and innovator in electrical explosion protection and sensor technology. Building on decades of experience and technical leadership, the company develops components and solutions tailored to the needs of its customers.

## **Use Synergies. Bundling Know-How for Mobility Beyond Company Boundaries.**

Enterprise Mobility Solutions from Pepperl+Fuchs follow customer's requests and needs and pave the way for future-oriented digitalization, offering a one-stop competitive solution concept and portfolio to enable the next level of enterprise-centric digitalization. This opens up completely new possibilities and increases the safety, efficiency, and transparency of operations in both conventional and IIoT applications—driving the value of connected solutions for mobile employees and digital transformation and thereby Pepperl+Fuchs Enterprise Mobility.

For more information about ecom, visit:  
[ecom-ex.com](http://ecom-ex.com) and [pepperl-fuchs.com](http://pepperl-fuchs.com)

# Your automation, our passion.

## Explosion Protection

- Intrinsic Safety Barriers
- Signal Conditioners
- FieldConnex® Fieldbus Infrastructure
- Remote I/O Systems
- Electrical Explosion Protection Equipment
- Purge and Pressurization Systems
- HMI Systems
- Mobile Computing and Communications
- HART Interface Solutions
- Surge Protection
- Wireless Solutions
- Level Measurement

## Industrial Sensors

- Proximity Sensors
- Photoelectric Sensors
- Industrial Vision
- Ultrasonic Sensors
- Radar Sensors
- Rotary Encoders
- Positioning Systems
- Inclination and Acceleration Sensors
- Vibration Monitoring
- Industrial Ethernet
- AS-Interface
- IO-Link
- Identification Systems
- Displays and Signal Processing
- Connectivity

[www.pepperl-fuchs.com](http://www.pepperl-fuchs.com)

Subject to modifications · © Pepperl+Fuchs  
Printed in Germany · Part. No. 70171965 11/23 00 · public



**Pepperl+Fuchs Quality**

Download our latest policy here:

[www.pepperl-fuchs.com/quality](http://www.pepperl-fuchs.com/quality)