

# Industry in Motion.

5G



Tab-Ex® 05—the Undisputed Standard for Mobile Working in Hazardous Areas

8" Android tablet for high security standards and complete protection.



Your automation, our passion.

 **PEPPERL+FUCHS**

# High Security Standards, Complete Protection

The rugged and highly secure Tab-Ex 05 tablet, designed for use in hazardous areas, continues the success story of the 5th generation of the 8-inch Tab-Ex series. The tablet is equipped with a powerful operating system that provides industry-leading performance in hazardous areas. Samsung wireless DeX Mode transforms the compact tablet into a desktop-like computer, and additional accessories, peripherals, digital products and services ensure maximum flexibility.



## Cameras

- Back: 13 MP (autofocus and LED flash)
- Front: 5 MP
- Optional: No camera possible

## Dedicated Keys

- Free programmable key, e.g. for emergency calls, alarms, or push-to-talk (PTT)

## Power

- Powerful Li-ion Battery 5050 mAh (Typical), 4900 mAh (Rated)

## Operating System

- Android™ (up to Android™ 22)

## Extended Temperature Range

- -20 °C ... +55 °C

## S Pen and Gloves

- Operable with S Pen and gloves, even in wet conditions



### Display

- 1920 × 1200 (WUXGA)
- 8" TFT
- Operable with gloves and in wet conditions

### Wireless DeX Mode

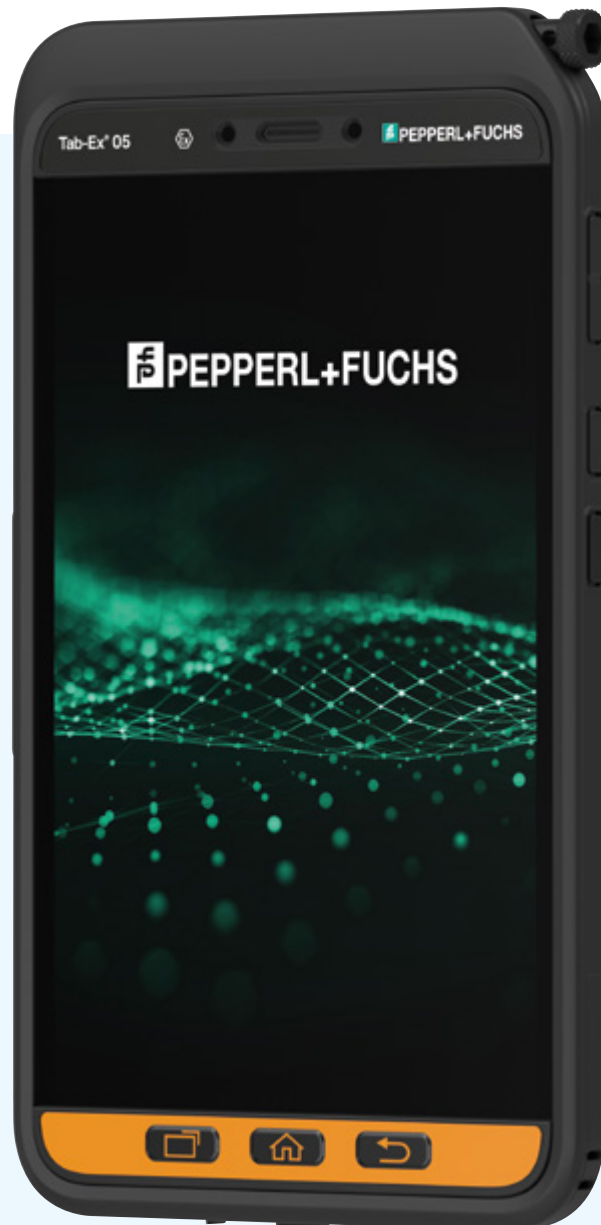
- Wirelessly connected to external devices (e. g., monitor, keyboard, mouse)

### Memory

- 6 GB RAM, 128 GB internal memory
- Optional: microSD 512 GB (up to 1 TB)

### Samsung KNOX Data and Device Security

- Features such as mobile enrollment, configuration, management, and eFOTA (a separate license must be purchased to support KNOX features)
- Baseline protection against malware, privacy hacks, and more



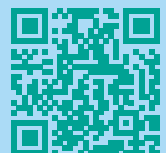
Wi-Fi 6



Bluetooth® 5.0



GPS, GLONASS,  
Beidou, Galileo



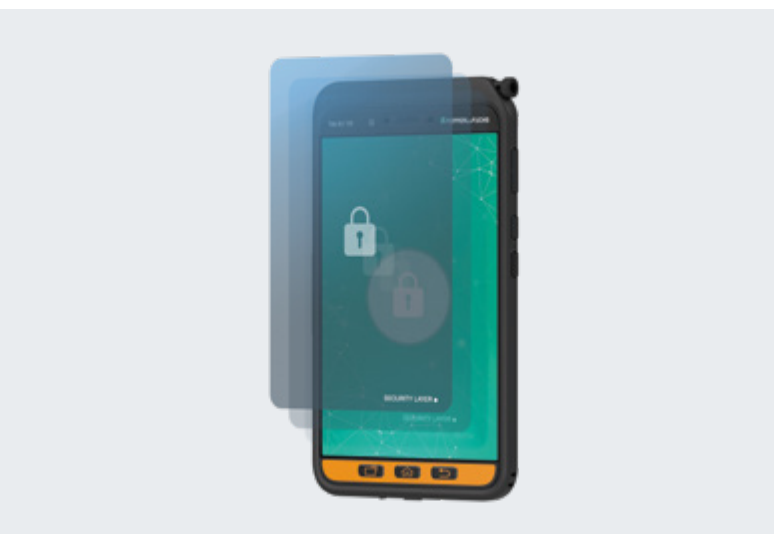
For more information, visit  
[pepperl-fuchs.com/  
tab-ex-05](https://pepperl-fuchs.com/tab-ex-05)

# The Next Generation of 8" Android Tablets for Use in Hazardous Areas



## Efficiency to Go, Taking Mobile Work to New Dimensions

Via Samsung Wireless DeX Mode, the Tab-Ex 05 can be quickly and easily connected to a keyboard, mouse, and monitor in the office, providing a full desktop experience. Its one-device strategy offers a cost-effective alternative to desktop PCs. Charging and data transfer occur via a pogo pin connector. Special keys on the new Tab-Ex 05 can be customized—for example, as an emergency key to enhance safety. Google ARCore™ is used to enable important augmented reality applications, such as remote support and training, as well as tailor-made tools for predictive maintenance. These features help support quality assurance and enhance plant safety. The Digital Products and Services platform completes the solution with ready-to-use devices tailored to individual requirements.



## Advanced Security, Protecting Data and Device

Based on Samsung's state-of-the-art Galaxy Tab Active5, the device ensures high data and device security through the Google Android™ operating system and Samsung KNOX. The Tab-Ex 05 supports all KNOX features, such as mobile enrollment, configuration management, and E-FOTA. In addition to biometric authentication and baseline protection against malware, privacy hacks, and more, the base device, the Samsung Galaxy Tab Active5, is part of the Android Enterprise Recommended (AER) program. Devices awarded the Android Enterprise Recommended certification meet the highest performance and security standards set by Google.



## Total Reliability, Assuring User-Friendliness

The 8-inch Android tablet Tab-Ex 05 features a slim and lightweight design. Despite its compact form factor, the tablet delivers high performance for demanding use cases. The multitouch display can be operated with an S Pen or gloves, even in wet conditions. It also offers optimal readability, even in direct light. From indoor pharmaceutical applications to harsh outdoor environments, the Tab-Ex 05 is built for temperatures ranging from  $-20^{\circ}\text{C}$  to  $+55^{\circ}\text{C}$  and for use in the most demanding industries. As a proven solution for industrial and rugged environments, it reflects a long-term strategic partnership with Samsung.

# Digital Products and Services

## Ready-to-Use Service for All Devices

Digital Products and Services is a solution that combines automated staging, mobile device management, and device analytics. It can also be used as a full-fledged enterprise mobility management system if required.

At the customer's request, the mobile devices can ship from the factory with predefined custom configurations such as security settings, applications, and wireless setup. This allows devices to be used anywhere in the world immediately upon delivery.

The devices can be managed via the Pepperl+Fuchs online platform and updated remotely at any time during operation without having to be sent to local IT staff or the head office. Cloud servers hosted in Germany meet the highest data protection standards and guarantee high data availability and security.



**One-Time Staging and Enrollment:**  
Staging and enrolling can be done internally



**Real-Time Diagnostics and Analytics:**  
Device diagnostics and analytics collect real-time operational data and fault analyses



**Continuous Device Monitoring:**  
Continuous monitoring of device statuses to preventively or immediately fix malfunctions



**Historical Data Analysis:**  
Analysis of historical data to detect critical software events and safety-critical processes



**Event Correlation and Causality Detection:**  
Statistical accumulation of events to establish correlations (e.g., between software errors, geographical data, Wi-Fi coverage)

### eCSL—Custom Service Load

- Custom device preconfiguration
- Delivered ready to use

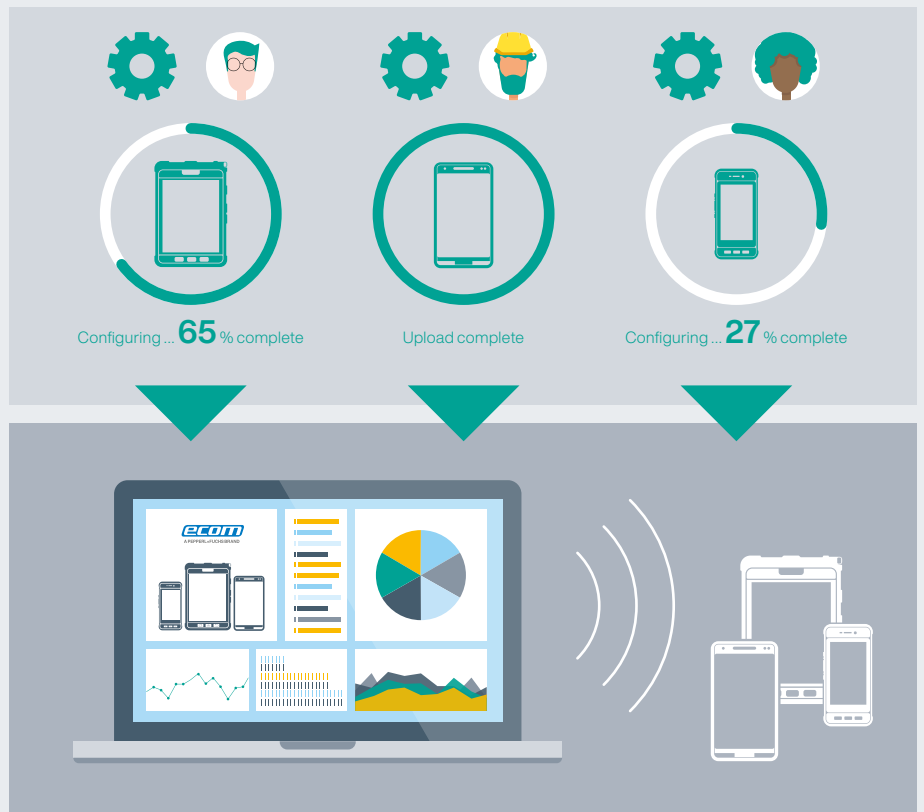
### Configuring and Management

#### eMDM—Mobile Device Management

- Update devices around the world simultaneously

### Device Diagnostics

- Analytics help avoid problems and correct errors



# Innovative Solutions from a Single Source

Pepperl+Fuchs offers a range of coordinated peripherals, accessories, and software solutions as the perfect complement to the Tab-Ex 05.



## Applications 4.0

- Inspection/maintenance
- Asset management/tracking
- Collaborative working
- Scanning/auto ID
- Process automation/operations
- Lone worker protection/localization (GeoIP)
- Engineering/installation
- Augmented reality (AR)
- Security/safety
- Push-to-Talk over cellular (PTToC)



## Hardware

### Peripherals

- Scanner
- Camera
- Headset

### Accessories

- Desktop charger/docking
- Spare battery
- Case
- Cradles

### Certification

- Ex certifications
- Regulatory
- Wireless certifications



## Support

- Sales and application engineering
- Service level agreements
- Security patches
- Software updates



## Software

- User management
- Customized roles and rights
- Android Enterprise Recommended (AER)
- Android zero-touch
- Kiosk mode
- APKs
- API/3rd party



## Safety

- Mobile worker
- Assets
- Data



## Digital Products and Services

- Preconfiguration/staging
- Mobile device management (over-the-air)
- Device analytics

# Peripherals for Use in Hazardous Areas

## Audio

### Bluetooth® Headset SM1P

Users of the SM1P Intrinsically Safe headsets benefit from clear communication using its wireless capabilities as well as face-to-face communication while still protecting their hearing and remaining aware of the surrounding work environment.

It's the perfect solution for your hazardous environments such as explosive chemicals and fuels as well as combustible powders. The SM1P series is the next generation, intrinsically safe headset.



## AutoID

### Scanner Ident-Ex® 01

Using a unique modular design, the Ident-Ex 01 can be specifically configured to the customer's requirements by selecting different head modules.

When requirements change, the head module on the unit can be replaced by one of the Pepperl+Fuchs service centers.

## Audio

### Remote Speaker Microphone RSM-Ex 01

The RSM-Ex 01 comes with IP65/67 degree of protection and integrated noise-reduction function. It provides clear, high-volume audio (up to 103 dB). The RSM is intuitive and easy to use, even when wearing gloves. Additional headsets can be connected using the standard 3.5 mm plug.



# Your automation, our passion.

- Industrial Sensors
- Industrial Communication and Interfaces
- Enterprise Mobility
- Hazardous Area Products and Solutions

[www.pepperl-fuchs.com](http://www.pepperl-fuchs.com)

Subject to modifications • © Pepperl+Fuchs  
Printed in Germany • Part. No. 70189460 01/25 • public



**Pepperl+Fuchs Quality**

Download our latest policy here:

[www.pepperl-fuchs.com/quality](http://www.pepperl-fuchs.com/quality)