



# Fieldbus Power Hub, Advanced Diagnostic Module

## HD2-DM-A

- Comprehensive diagnostics for fieldbus physical layer and power supply
- Plug-in Module for the FieldConnex Power Hub
- Precise measurements through passive circuits
- For commissioning, online monitoring and troubleshooting
- For FOUNDATION Fieldbus H1 and PROFIBUS PA
- Installation in Zone 2/Class I, Div. 2
- System state and fault indication via LEDs
- Display of data in the safety of the control room
- Automatic setup of diagnostic system
- Full software integration into PCS and PAM possible

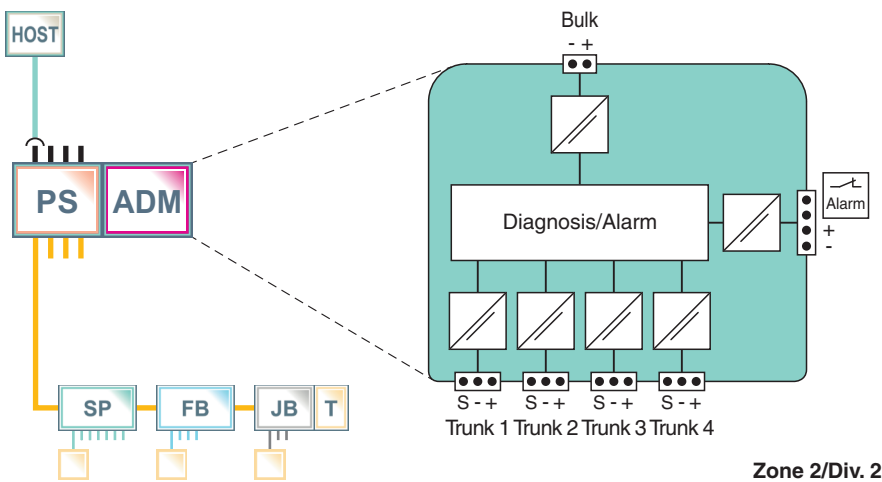


### Function

Designed as a plug-in module for the FieldConnex® Power Hub, this Advanced Diagnostic Module (ADM) is a comprehensive measurement tool for the physical layer of up to four fieldbus segments. Its passive input circuits leave the physical layer untouched for exact data. The ADM detects gradual or sudden changes and helps trace even intermittent malfunctions.

The ADM supports commissioning, online monitoring and troubleshooting. It can be integrated tightly into the DCS and PAM via a separate diagnostic bus, making the fieldbus physical layer itself a manageable asset. Configuration tools automate setup of the ADM and of selected DCS. The Diagnostic Manager is the software for display and operation from the safety of the control room. The Professional Edition provides powerful functions and wizards simplifying and automating work procedures: an embedded expert system, a data historian, and a built-in oscilloscope (see datasheet DTM-FC.AD\*).

### Connection



### Technical Data

#### General specifications

Design / Mounting: Motherboard based

#### Supply

Rated voltage	$U_r$	19.2 ... 35 V
Rated current	$I_r$	110 ... 30 mA
Power dissipation		max. 2 W

#### Fieldbus connection

Release date: 2022-07-04 Date of issue: 2022-07-04 Filename: 131000\_eng.pdf

Refer to "General Notes Relating to Pepperl+Fuchs Product Information".

Pepperl+Fuchs Group  
www.pepperl-fuchs.com

USA: +1 330 486 0002  
pa-info@us.pepperl-fuchs.com

Germany: +49 621 776 2222  
pa-info@de.pepperl-fuchs.com

Singapore: +65 6779 9091  
pa-info@sg.pepperl-fuchs.com

**PF** PEPPERL+FUCHS

## Technical Data

Number of segments		4
Fieldbus type		FOUNDATION Fieldbus/PROFIBUS PA
Rated voltage	U <sub>N</sub>	9 ... 32 V
<b>Indicators/operating means</b>		
LED PRI PWR		green: on, primary bulk power supply connected
LED SEC PWR		green: on, secondary bulk power supply connected
LED Seg 1...4		yellow: bus activity; red 2 Hz flashing: alarm; red: hardware error
Fault signal		VFC alarm 1 A, 50 V DC, normally closed
DIP switch		diagnostic address 1...247, binary coded
<b>Interface</b>		
Interface type		diagnostic bus: RS 485
<b>Galvanic isolation</b>		
Fieldbus segment/Fieldbus segment		functional insulation acc. to IEC 62103, rated insulation voltage 50 V <sub>eff</sub>
Fieldbus segment/Supply		functional insulation acc. to IEC 62103, rated insulation voltage 50 V <sub>eff</sub>
<b>Directive conformity</b>		
Electromagnetic compatibility		
Directive 2014/30/EU		EN 61326-1:2013
<b>Standard conformity</b>		
Electromagnetic compatibility		NE 21:2011
Degree of protection		IEC 60529
Shock resistance		EN 60068-2-27
Vibration resistance		EN 60068-2-6
<b>Ambient conditions</b>		
Ambient temperature		-40 ... 70 °C (-40 ... 158 °F)
Storage temperature		-40 ... 85 °C (-40 ... 185 °F)
Relative humidity		< 95 % non-condensing
Shock resistance		15 g 11 ms
Vibration resistance		1 g , 10 ... 150 Hz
Pollution degree		max. 2, according to IEC 60664
Corrosion resistance		acc. to ISA-S71.04-1985, severity level G3
<b>Mechanical specifications</b>		
Connection type		motherboard specific
Core cross section		motherboard specific
Housing material		Polycarbonate
Housing width		18 mm
Housing height		106 mm
Housing depth		128 mm
Degree of protection		IP20
Mass		approx. 100 g
Mounting		motherboard mounting
Mating cycles		100
<b>Data for application in connection with hazardous areas</b>		
Certificate		TÜV 04 ATEX 2500 X
Marking		Ⓔ II 3 G Ex nA IIC T4 Gc
Directive conformity		
Directive 2014/34/EU		EN 60079-0:2012 , EN 60079-11:2012 , EN 60079-15:2010
<b>International approvals</b>		
FM approval		
FM certificate		FM 19 US 0015 X and FM 19 CA 0011 X
FM marking		AEx/Ex ec IIC T4
IECEx approval		
IECEx certificate		IECEx TUN 13.0038X
IECEx marking		Ex nA IIC T4 Gc

Release date: 2022-07-04 Date of issue: 2022-07-04 Filename: 131000\_eng.pdf

Refer to "General Notes Relating to Pepperl+Fuchs Product Information".

Pepperl+Fuchs Group  
www.pepperl-fuchs.comUSA: +1 330 486 0002  
pa-info@us.pepperl-fuchs.comGermany: +49 621 776 2222  
pa-info@de.pepperl-fuchs.comSingapore: +65 6779 9091  
pa-info@sg.pepperl-fuchs.com
 PEPPERL+FUCHS

## Technical Data

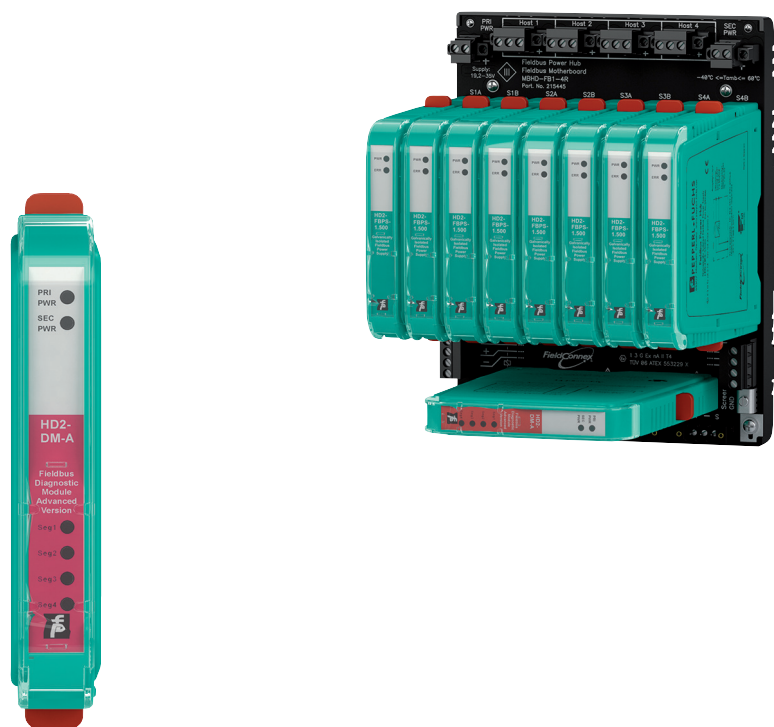
### Certificates and approvals

Marine approval	DNV A-14038
Patents	This product may be covered by the following patent: US7,698,103

### General information

Supplementary information	Observe the certificates, declarations of conformity, instruction manuals, and manuals where applicable. For information see <a href="http://www.pepperl-fuchs.com">www.pepperl-fuchs.com</a> .
---------------------------	---

## Product Photo



## Matching System Components

	<b>FBTA-228-BPFB-R-8R</b>	Compact Fieldbus Power Hub Motherboard for Invensys FBM 228
	<b>MBHC-FB-4.HSC*</b>	Compact Fieldbus Power Hub Motherboard with Host System Connectors
	<b>MBHC-FB-4R.HSC*</b>	Compact Fieldbus Power Hub Motherboard with Host System Connectors
	<b>MBHC-FB-4.GT*</b>	Fieldbus Power Hub, Motherboard for Gateway and Power Supply Modules

## Accessories

	<b>DTM-FC.AD*</b>	User-Interface for Advanced Diagnostics, Professional Edition
	<b>DTM-FC.AD</b>	Software user interface for advanced diagnostic modules; license for up to a maximum of 100 segments

Release date: 2022-07-04 Date of issue: 2022-07-04 Filename: 131000\_eng.pdf

Refer to "General Notes Relating to Pepperl+Fuchs Product Information".






Pepperl+Fuchs Group  
www.pepperl-fuchs.com

USA: +1 330 486 0002  
pa-info@us.pepperl-fuchs.com

Germany: +49 621 776 2222  
pa-info@de.pepperl-fuchs.com

Singapore: +65 6779 9091  
pa-info@sg.pepperl-fuchs.com

## Accessories

	<b>DTM-FC.AD.1</b>	Software user interface for advanced diagnostic modules; license for 100 segments or more
	<b>DTM-FC.AD.UPG</b>	Advanced diagnostics upgrade license from V1.x to V2.x for plants with up to 100 segments
	<b>DTM-FC.AD.1.UPG</b>	Advanced diagnostics upgrade license from V1.x to V2.x for plants with 100 or more segments
	<b>PACTware 4.1</b>	FDT Framework
	<b>PACTware 5.0</b>	FDT Framework

Release date: 2022-07-04 Date of issue: 2022-07-04 Filename: 131000\_eng.pdf

Refer to "General Notes Relating to Pepperl+Fuchs Product Information".

Pepperl+Fuchs Group  
www.pepperl-fuchs.com

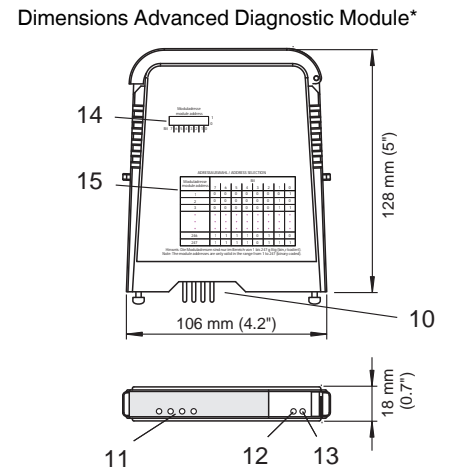
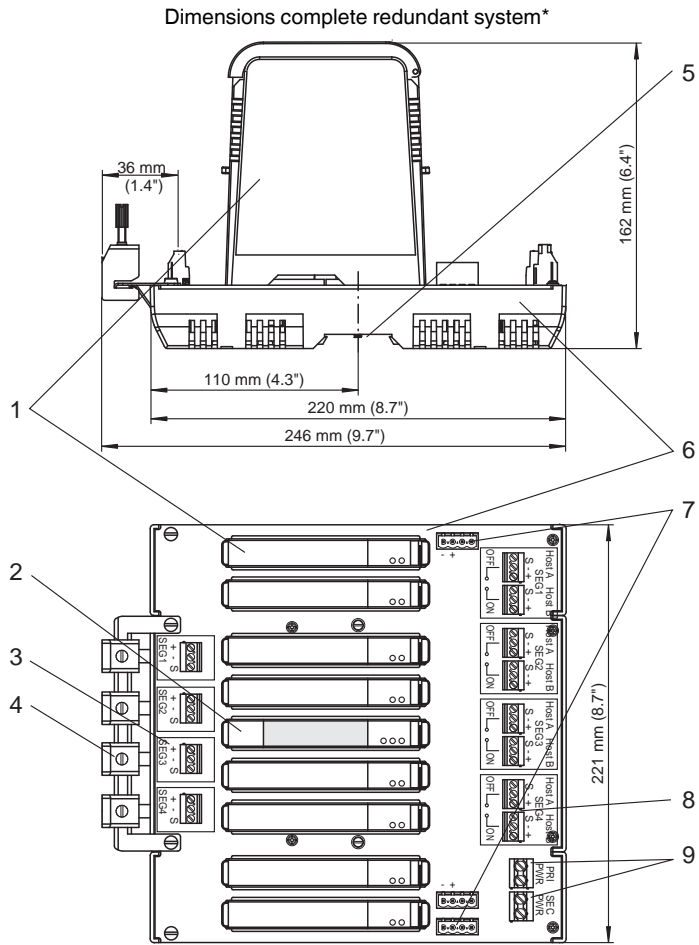
USA: +1 330 486 0002  
pa-info@us.pepperl-fuchs.com

Germany: +49 621 776 2222  
pa-info@de.pepperl-fuchs.com

Singapore: +65 6779 9091  
pa-info@sg.pepperl-fuchs.com

**Additional Information**

**Dimensions and Assembly**



\*all dimensions without tolerance indication

**Description:**

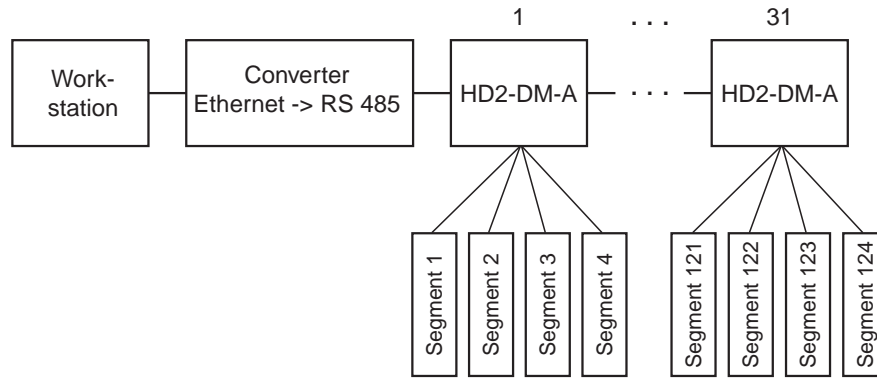
- 1 Power Supply Modules, see separate data sheets
- 2 Advanced Diagnostic Module
- 3 Connections for fieldbus trunk, terminator switch
- 4 Screening/earthing kit for trunk cables shield, optional accessory
- 5 Mounting slot for DIN rail
- 6 Motherboard, see separate data sheets
- 7 Connections for alarm, voltage free contact and diagnostics bus
- 8 Connections for redundant host
- 9 Connections for redundant bulk power supply

- 10 Plug connections to Motherboard
- 11 LED Seg 1 ... Seg 4
- 12 LED green SEC Power
- 13 LED green PRI Power
- 14 Dip-Switch-Array for diagnostic address or address on the diagnostics bus
- 15 Address selection overview

**Installation**

System topology

Release date: 2022-07-04 Date of issue: 2022-07-04 Filename: 131000\_eng.pdf



Installation notes see manual.

### Accessories

- Software User Interface for monitoring up to or including 100 fieldbus segments: Diagnostic Manager, Professional Edition DTM-FC.AD
- Software User Interface for monitoring more than 100 fieldbus segments: Diagnostic Manager, Professional Edition DTM-FC.AD.1
- KT-MB-GT2AD Diagnostic Gateway