

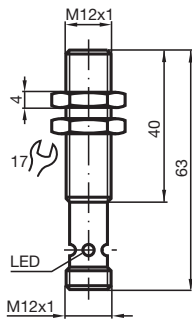
# Magnetic field sensor MC60-12GM50-1N-V1



- 60 mm flush with permanent magnet DM 60-31-15



## Dimensions



## Technical Data

### General specifications

Switching function		Normally open (NO)
Output type		NAMUR
Rated operating distance	$s_n$	60 mm
Installation		flush in non-magnetic metal
Assured operating distance	$s_a$	10 ... 48.6 mm
Output type		2-wire

### Nominal ratings

Nominal voltage	$U_o$	8.2 V ( $R_i$ approx. 1 k $\Omega$ )
Switching frequency	$f$	0 ... 5000 Hz
Current consumption		
Magnet detected		$\geq 2.5$ mA
Magnet not detected		$\leq 1$ mA
Switching state indicator		LED, yellow

Release date: 2020-10-19 Date of issue: 2020-10-19 Filename: 183132\_eng.pdf

Refer to "General Notes Relating to Pepperl+Fuchs Product Information".

Pepperl+Fuchs Group  
www.pepperl-fuchs.com

USA: +1 330 486 0001  
fa-info@us.pepperl-fuchs.com

Germany: +49 621 776 1111  
fa-info@de.pepperl-fuchs.com

Singapore: +65 6779 9091  
fa-info@sg.pepperl-fuchs.com

PEPPERL+FUCHS

## Technical Data

### Functional safety related parameters

MTTF <sub>d</sub>	4382 a
Mission Time (T <sub>M</sub> )	20 a
Diagnostic Coverage (DC)	0 %

### Compliance with standards and directives

Standard conformity	
NAMUR	EN 60947-5-6:2000
Standards	EN 60947-5-2:2007 EN 60947-5-2/A1:2012 IEC 60947-5-2:2007 IEC 60947-5-2 AMD 1:2012

### Approvals and certificates

ATEX approval	
Equipment protection level Gb	TÜV 01 ATEX 1718
FM approval	
Control drawing	116-0165

### Ambient conditions

Ambient temperature	-25 ... 70 °C (-13 ... 158 °F)
---------------------	--------------------------------

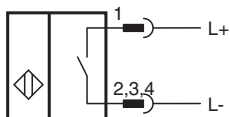
### Mechanical specifications

Connection type	Connector plug M12 x 1, 4-pin
Housing material	stainless steel 1.4404 / AISI 316L
Sensing face	stainless steel 1.4404 / AISI 316L
Degree of protection	IP67

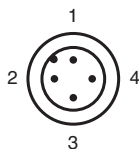
### General information

Use in the hazardous area	see instruction manuals
---------------------------	-------------------------

## Connection

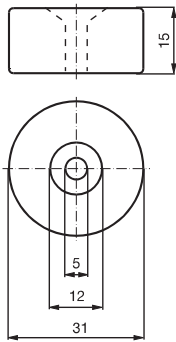


## Connection Assignment

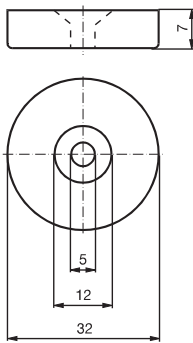


**Additional Information**







**Magnet DM 60-31-15**



**Magnet DM 25-32-07**



**Accessories**

	<b>BF 12</b>	Mounting flange, 12 mm
	<b>EXG-12</b>	Quick mounting bracket with dead stop
	<b>DM 60-31-15</b>	Permanent magnet for magnetic field sensors
	<b>DM 25-32-07</b>	Permanent magnet for magnetic field sensors
	<b>V1-G-N-2M-PUR</b>	Female cordset single-ended M12 straight A-coded, 2-pin, PUR cable blue, NAMUR
	<b>V1-W-N-2M-PUR</b>	Female cordset single-ended M12 angled A-coded, 2-pin, PUR cable blue, NAMUR

Release date: 2020-10-19 Date of issue: 2020-10-19 Filename: 183132\_eng.pdf