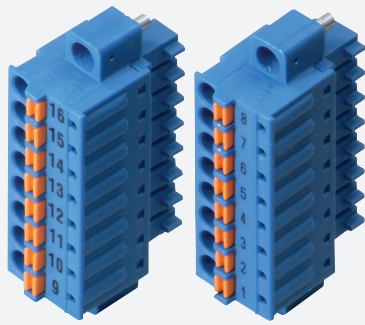


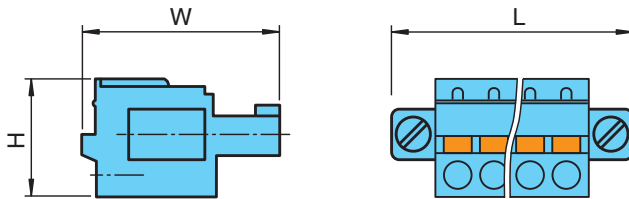
Terminal Block

LB9116A



- Spring terminal
- For LB and FB modules
- 2 x 8-pole
- Labeled 1 ... 8 and 9 ... 16
- Color blue
- For Ex ia or Ex ib applications

Dimensions



Technical Data

General specifications			
Number of pins			2 x 8
Labeling			1 ... 8 & 9 ... 16
Electrical specifications			
Rated voltage	U_r		160 V
Rated current	I_r		8 A
Mechanical specifications			
Core cross section			0.14 ... 1.5 mm ²
Housing			blue
Mass			approx. 5 g
Dimensions			
H			12.4 mm
W			20.8 mm
L			40.9 mm
Construction type			spring terminal

Release date: 2022-10-21 Date of issue: 2022-10-21 Filename: 542054_eng.pdf

Refer to "General Notes Relating to Pepperl+Fuchs Product Information".

Pepperl+Fuchs Group
www.pepperl-fuchs.com

USA: +1 330 486 0002
pa-info@us.pepperl-fuchs.com

Germany: +49 621 776 2222
pa-info@de.pepperl-fuchs.com

Singapore: +65 6779 9091
pa-info@sg.pepperl-fuchs.com

 **PEPPERL+FUCHS**