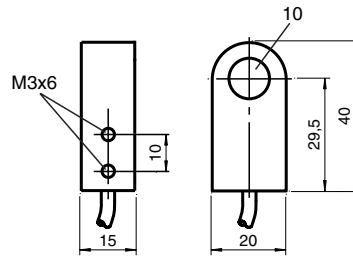


Comfort series

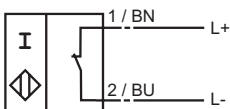


CE

Switching element function	NAMUR NC
Inside diameter	10 mm
Installation	
Measuring cone	Ø 1/8", material SS18
Nominal voltage $U_o$	8 V
Operating voltage $U_B$	5 ... 25 V
Switching frequency $f$	0 ... 2000 Hz
Current consumption	
Measuring plate not detected	≥ 3 mA
Measuring plate detected	≤ 1 mA
EMC in accordance with	EN 60947-5-2
Standards	DIN EN 60947-5-6 (NAMUR)
Ambient temperature	10 ... 40 °C (283 ... 313 K)
Connection type	2 m, PVC cable
Core cross-section	0.14 mm <sup>2</sup>
Housing material	PBT
Protection degree	IP67

**Connection\_type:**

N / NO



008604\_ENG.xml

2003-03-25

## Data for Ex areas

Effective internal inductivity $C_i$	$\leq 25 \text{ nF}$
Effective internal inductance $L_i$	$\leq 10 \text{ }\mu\text{H}$