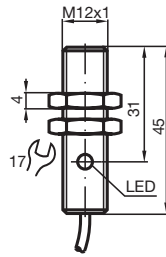


Comfort series  
60 mm embeddable

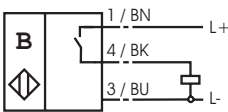


CE

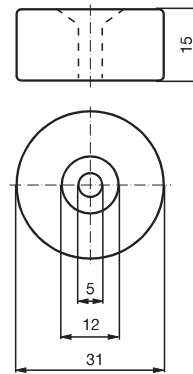
Switching element function	PNP	Make function
Rated operating distance $s_n$	60 mm	
Installation	embeddable	
Assured operating distance $s_a$	0 ... 48,6 mm	
Operating voltage $U_B$	10 ... 30 V	
Switching frequency $f$	0 ... 400 Hz	
Reverse polarity protection	yes	
Short circuit protection	pulsing	
Voltage drop $U_d$	$\leq 3$ V	
Operating current $I_L$	0 ... 200 mA	
No-load supply current $I_0$	$\leq 15$ mA	
Indication of the switching state	LED, red	
Standards	EN 60947-5-2	
Ambient temperature	-25 ... 70 °C (248 ... 343 K)	
Connection type	2 m, PUR cable	
Core cross-section	0.34 mm <sup>2</sup>	
Housing material	high grade steel	
Sensing face	high grade steel	
Protection degree	IP67	

**Connection\_type:**

E2



**Magnet DM 60-31-15**



**Magnet DM 25-32-07**

