

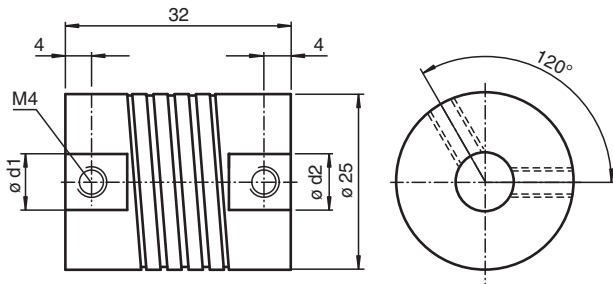
Coupling

KW-6/10

- Universally suitable for backlash-free rotation transmission
- Vibration- isolating
- Optimal misalignment compensation
- Medium torsion spring stiffness
- Small reset forces
- No moving parts, fabricated in one piece
- Suitable for vacuum

Helical coupling

Dimensions



Technical Data

| Ambient conditions | |
|--------------------------------------|---|
| Operating temperature | -30 ... 150 °C (-22 ... 302 °F) |
| Mechanical specifications | |
| Shaft diameter | d1 = 6 mm , d2 = 10 mm |
| Material | anodized aluminum |
| Mass | 35 g |
| Rotational speed | max. 8000 min ⁻¹ |
| Max. torque | 1 Nm |
| Radial offset | max. ± 0.3 mm |
| Axial offset | max. ± 0.5 mm |
| Angle error | max. ± 4 ° |
| Torsion spring stiffness | 18 Nm / rad |
| Radial spring stiffness | 50 N / mm |
| Moment of inertia | 30 kg m ² x 10 ⁻⁷ |
| Mounting | clamp screws M4 x 6, DIN 916 |
| Tightening torque of clamping screws | max. 1.2 Nm |

Release date: 2022-12-10 Date of issue: 2022-12-12 Filename: 030530_eng.pdf

Refer to "General Notes Relating to Pepperl+Fuchs Product Information".

Pepperl+Fuchs Group
www.pepperl-fuchs.com

USA: +1 330 486 0001
fa-info@us.pepperl-fuchs.com

Germany: +49 621 776 1111
fa-info@de.pepperl-fuchs.com

Singapore: +65 6779 9091
fa-info@sg.pepperl-fuchs.com

PF PEPPERL+FUCHS