

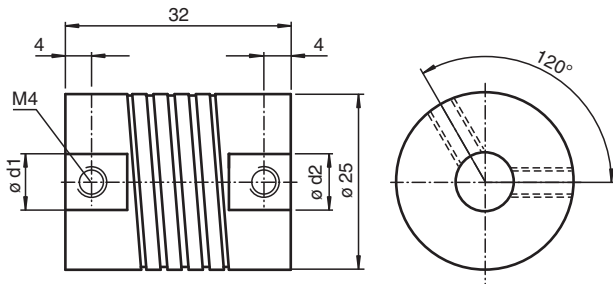
# Coupling

## KW-8/10

- Universally suitable for backlash-free rotation transmission
- Vibration- isolating
- Optimal misalignment compensation
- Medium torsion spring stiffness
- Small reset forces
- No moving parts, fabricated in one piece
- Suitable for vacuum

Helical coupling

### Dimensions



### Technical Data

<b>Ambient conditions</b>	
Operating temperature	-30 ... 150 °C (-22 ... 302 °F)
<b>Mechanical specifications</b>	
Shaft diameter	d1 = 8 mm , d2 = 10 mm
Material	anodized aluminum
Mass	35 g
Rotational speed	max. 8000 min <sup>-1</sup>
Max. torque	1 Nm
Radial offset	max. ± 0.3 mm
Axial offset	max. ± 0.5 mm
Angle error	max. ± 4 °
Torsion spring stiffness	18 Nm / rad
Radial spring stiffness	50 N / mm
Moment of inertia	30 kg m <sup>2</sup> x 10 <sup>-7</sup>
Mounting	clamp screws M4 x 6, DIN 916
Tightening torque of clamping screws	max. 1.2 Nm

Release date: 2022-08-27 Date of issue: 2022-12-12 Filename: 030531\_eng.pdf

Refer to "General Notes Relating to Pepperl+Fuchs Product Information".

Pepperl+Fuchs Group  
www.pepperl-fuchs.com

USA: +1 330 486 0001  
fa-info@us.pepperl-fuchs.com

Germany: +49 621 776 1111  
fa-info@de.pepperl-fuchs.com

Singapore: +65 6779 9091  
fa-info@sg.pepperl-fuchs.com

**PF** PEPPERL+FUCHS