



Model Number

NJ15-30GM50-E2-C-V1

Features

- Weld Immune

Technical Data

General specifications

Switching element function		PNP	NO
Rated operating distance	s_n	15 mm	
Installation		non-flush	
Output polarity		switched high	
Assured operating distance	s_a	0 ... 12.15 mm	
Reduction factor r_{Al}		0.45	
Reduction factor r_{Cu}		0.4	
Reduction factor r_{304}		0.85	

Nominal ratings

Operating voltage	U_B	10 ... 60 V	
Switching frequency	f	0 ... 50 Hz	
Reverse polarity protection		reverse polarity protected	
Short-circuit protection		pulsing	
Voltage drop	U_d	≤ 3 V	
Operating current	I_L	0 ... 400 mA	
No-load supply current	I_0	≤ 15 mA	
Switching state indicator		LED, yellow	

Standard conformity

Standards	IEC / EN 60947-5-2:2004		
-----------	-------------------------	--	--

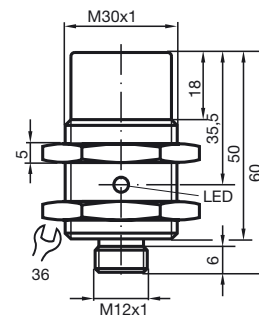
Ambient conditions

Ambient temperature	-25 ... 70 °C (-13 ... 158 °F)		
---------------------	--------------------------------	--	--

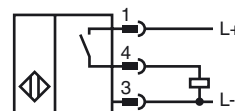
Mechanical specifications

Core cross-section	-		
Housing material	Brass, PTFE coated		
Sensing face	PPS		
Degree of protection	IP67		

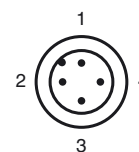
Dimensions



Electrical Connection



Pinout





Wire colors in accordance with EN 60947-5-2

1		BN	(brown)
2		WH	(white)
3		BU	(blue)
4		BK	(black)

Release date: 2015-02-24 11:21 Date of issue: 2015-02-25 039714_eng.xml