



### Model Number

PL2-F25-E8-S

### Features

- For installation in housing
- PL2... without valve connection
- Direct mounting on standard actuators

### Accessories

#### BT32

Activator for F25 series

#### BT32XS

Activator for F25 series

#### BT32XAS

Activator for F25 series

#### BT33

Activator for F25 series

#### BT34

Activator for F25 series

## Technical Data

### General specifications

Switching element function		PNP	Dual NO
Rated operating distance	$s_n$	3 mm	
Installation		flush mountable	
Output polarity		DC	
Assured operating distance	$s_a$	0 ... 2.43 mm	
Actual operating distance	$s_r$	2.6 ... 2.6 mm typ.	
Reduction factor $r_{AI}$		0.5	
Reduction factor $r_{304}$		1	
Reduction factor $r_{S37}$		1.1	

### Nominal ratings

Operating voltage	$U_B$	10 ... 30 V DC
Switching frequency	$f$	0 ... 100 Hz
Hysteresis	$H$	typ. 5 %
Reverse polarity protection		reverse polarity protected
Short-circuit protection		pulsing
Voltage drop	$U_d$	$\leq 3$ V
Operating current	$I_L$	0 ... 200 mA
Off-state current	$I_r$	0 ... 0.5 mA typ. 0.1 $\mu$ A at 25 °C
No-load supply current	$I_0$	$\leq 25$ mA
Time delay before availability	$t_v$	$\leq 500$ ms
Operating voltage indicator		LED, green
Switching state indicator		LED, yellow

### Ambient conditions

Ambient temperature	-25 ... 70 °C (-13 ... 158 °F)
Storage temperature	-40 ... 85 °C (-40 ... 185 °F)

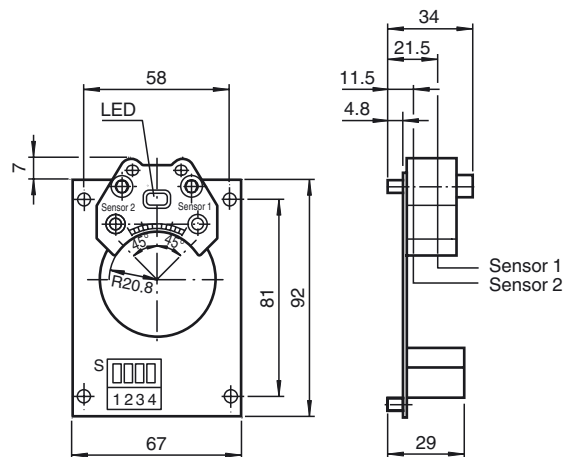
### Mechanical specifications

Housing material	PBT
Sensing face	PBT
Degree of protection	IP20

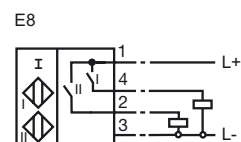
### Compliance with standards and directives

Standard conformity	
Standards	EN 60947-5-2:2007 IEC 60947-5-2:2007

## Dimensions



## Electrical Connection



**Type code: PL2-F25-E8-S****Circuit board****PL2-F25-E8-S**

PL2 Without valve connection

**Sensor type****PL2-F25-E8-S**F25 F25 proximity switch  
standard series**Electrical type****PL2-F25-E8-S**

E8 3-wire DC

**Connection technology****PL2-F25-E8-S**

S Removable screw terminal