

Model Number

PL2-F25-N4-S

Features

- For installation in housing
- PL2... without valve connection
- Screw terminals
- Direct mounting on standard actuators

Accessories

BT32

Activator for F25 series

BT32XS

Activator for F25 series

BT32XAS

Activator for F25 series

BT33

Activator for F25 series

BT34

Activator for F25 series

Technical Data

General specifications

Switching function		2 x normally closed (NC)
Output type		NAMUR
Rated operating distance	s_n	3 mm
Installation		flush mountable
Assured operating distance	s_a	0 ... 2.43 mm
Actual operating distance	s_r	2.6 ... 2.6 mm typ.
Reduction factor r_{AI}		0.5
Reduction factor r_{304}		1
Reduction factor r_{St37}		1.2
Output type		2-wire

Nominal ratings

Nominal voltage	U_o	8.2 V (R_i approx. 1 k Ω)
Operating voltage	U_B	5 ... 25 V
Switching frequency	f	0 ... 100 Hz
Hysteresis	H	typ. 5 %
Reverse polarity protection		reverse polarity protected
Short-circuit protection		yes
Current consumption		
Measuring plate not detected		≥ 3 mA
Measuring plate detected		≤ 1 mA
No-load supply current	I_0	≤ 3 mA
Time delay before availability	t_v	≤ 1 ms
Switching state indicator		LED, yellow

Ambient conditions

Ambient temperature		-25 ... 100 °C (-13 ... 212 °F)
Storage temperature		-40 ... 100 °C (-40 ... 212 °F)

Mechanical specifications

Connection type		screw terminals
Core cross-section (system side)		up to 2.5 mm ²
Housing material		PBT
Sensing face		PBT
Note		Installation in housing

General information

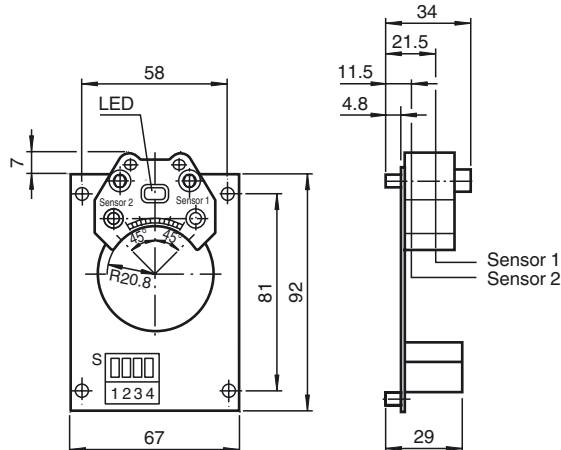
Use in the hazardous area		see instruction manuals
Category		1G; 2G

Compliance with standards and directives

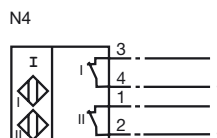
Standard conformity		
NAMUR		EN 60947-5-6:2000

Electromagnetic compatibility		NE 21:2007
-------------------------------	--	------------

Dimensions



Electrical Connection



Type code: PL2-F25-N4-S

Printed circuit boards PL2-F25-N4-S

PL2 Without valve connection

Sensor type PL2-F25-N4-S

F25 F25 proximity switch
Standard series

Electrical design PL2-F25-N4-S

N4 Electrical design
according to EN 50227

Connection method PL2-F25-N4-S

S Pluggable screw
terminal

Equipment protection level Ga

CE marking **CE**0102

Effective internal inductivity C_i ≤ 100 nF A cable length of 10 m is considered.
The value is applicable for one sensor circuit.

Effective internal inductance L_i ≤ 100 μ H A cable length of 10 m is considered.
The value is applicable for one sensor circuit.

Highest permissible ambient temperature Depending on the temperature class, the temperature ranges can be taken from the EU-type examination certificate.
Note: Use the temperature table for category 1 !!! The 20 % reduction in accordance with EN 1127-1 has already been applied to the temperature table for category 1.

Equipment protection level Gb

CE marking **CE**0102

Effective internal inductivity C_i ≤ 100 nF ; a cable length of 10 m is considered. The value is applicable for one sensor circuit.

Effective internal inductance L_i ≤ 100 μ H ; a cable length of 10 m is considered. The value is applicable for one sensor circuit.

Maximum permissible ambient temperature T_{amb} Depending on the temperature class, the temperature ranges can be taken from the EU-type examination certificate.

Release date: 2017-06-28 17:23 Date of issue: 2017-07-03 044569_eng.xml