

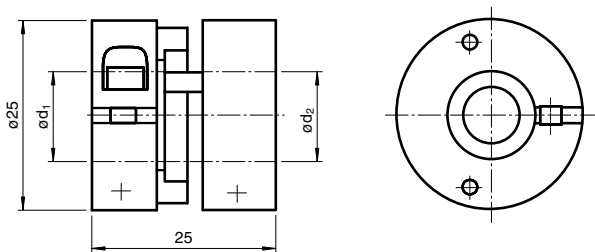
Coupling

9410 6*6

■ Precision coupling

Precision coupling

Dimensions



Technical Data

Mechanical specifications

Shaft diameter	$d_1 = 6 \text{ mm}$, $d_2 = 6 \text{ mm}$
Material	Delrin 107, AlMgSi1, hard coated
Mass	25 g
Rotational speed	max. 15000 min^{-1}
Max. torque	1 Nm
Tightening torque, fastening screws	1.3 Nm
Radial offset	max. $\pm 0.5 \text{ mm}$
Axial offset	max. $\pm 0.3 \text{ mm}$
Angle error	max. $\pm 1.5^\circ$
Torsional rigidity	50 Nm / rad
Moment of inertia	$20 \text{ kg m}^2 \times 10^{-7}$
Mounting	clamping flange

Release date: 2022-12-10 Date of issue: 2022-12-12 Filename: 045020_eng.pdf

Refer to "General Notes Relating to Pepperl+Fuchs Product Information".

Pepperl+Fuchs Group
www.pepperl-fuchs.com

USA: +1 330 486 0001
fa-info@us.pepperl-fuchs.com

Germany: +49 621 776 1111
fa-info@de.pepperl-fuchs.com

Singapore: +65 6779 9091
fa-info@sg.pepperl-fuchs.com

 **PEPPERL+FUCHS**