

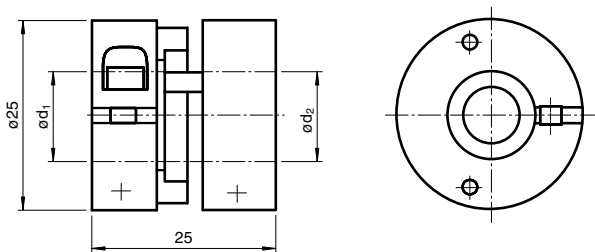
# Coupling

## 9410 10\*10

■ Precision coupling

Precision coupling

### Dimensions



### Technical Data

#### Mechanical specifications

Shaft diameter	d1 = 10 mm , d2 = 10 mm
Material	Delrin 107, AlMgSi1, hard coated
Mass	25 g
Rotational speed	max. 15000 min <sup>-1</sup>
Max. torque	1 Nm
Tightening torque, fastening screws	1.3 Nm
Radial offset	max. ± 0.5 mm
Axial offset	max. ± 0.3 mm
Angle error	max. ± 1.5 °
Torsional rigidity	50 Nm / rad
Moment of inertia	20 kg m <sup>2</sup> x 10 <sup>-7</sup>
Mounting	clamping flange

Release date: 2022-12-07 Date of issue: 2022-12-12 Filename: 045021\_eng.pdf

Refer to "General Notes Relating to Pepperl+Fuchs Product Information".

Pepperl+Fuchs Group  
www.pepperl-fuchs.com

USA: +1 330 486 0001  
fa-info@us.pepperl-fuchs.com

Germany: +49 621 776 1111  
fa-info@de.pepperl-fuchs.com

Singapore: +65 6779 9091  
fa-info@sg.pepperl-fuchs.com

**PF** PEPPERL+FUCHS