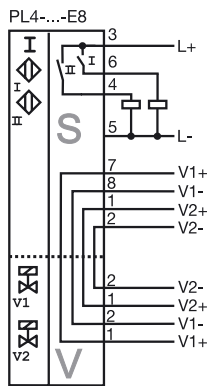


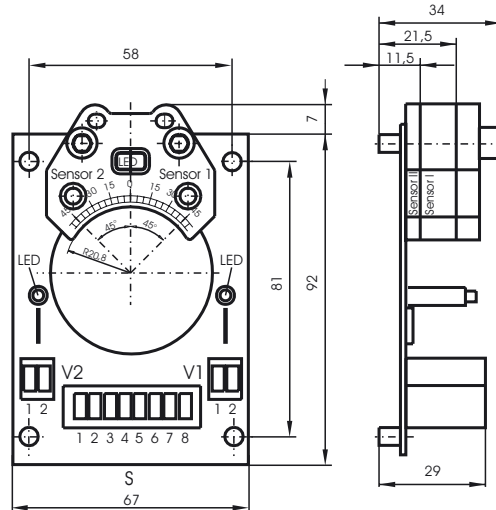
Model Number

PL4-F25-E8-S

Connection



Dimensions



Technical Data

General specifications

Switching element function	PNP	Dual NO
Rated operating distance	s_n	3 mm
Installation		flush mountable
Output polarity		DC
Assured operating distance	s_a	0 ... 2.43 mm
Reduction factor r_{A1}		0.5
Reduction factor r_{V2A}		1
Reduction factor r_{S137}		1.1

Nominal ratings

Operating voltage	U_B	10 ... 30 V
Switching frequency	f	0 ... 100 Hz
Reverse polarity protected		reverse polarity protected
Short-circuit protection		pulsing
Voltage drop	U_d	≤ 3 V
Operating current	I_L	0 ... 200 mA
No-load supply current	I_0	≤ 25 mA
Operating voltage display		LED, green
Indication of the switching state		LED, yellow
Valve status indication		LED, yellow

Standard conformity

EMC in accordance with	IEC / EN 60947-5-2:2004
Standards	IEC / EN 60947-5-2:2004

Ambient conditions

Ambient temperature	-25 ... 70 °C (-13 ... 158 °F)
Storage temperature	-40 ... 70 °C (-40 ... 158 °F)

Mechanical specifications

Connection (system side)	screw terminals
Core cross-section (system side)	up to 2.5 mm ²
Connection (valve side)	screw terminals
Core cross-section (valve side)	up to 2.5 mm ²
Protection degree	IP20
Note	Installation in housing

Release date: 2002-11-11 11:07 Date of issue: 2010-12-16 047534_ENG.xml