



**Model Number**

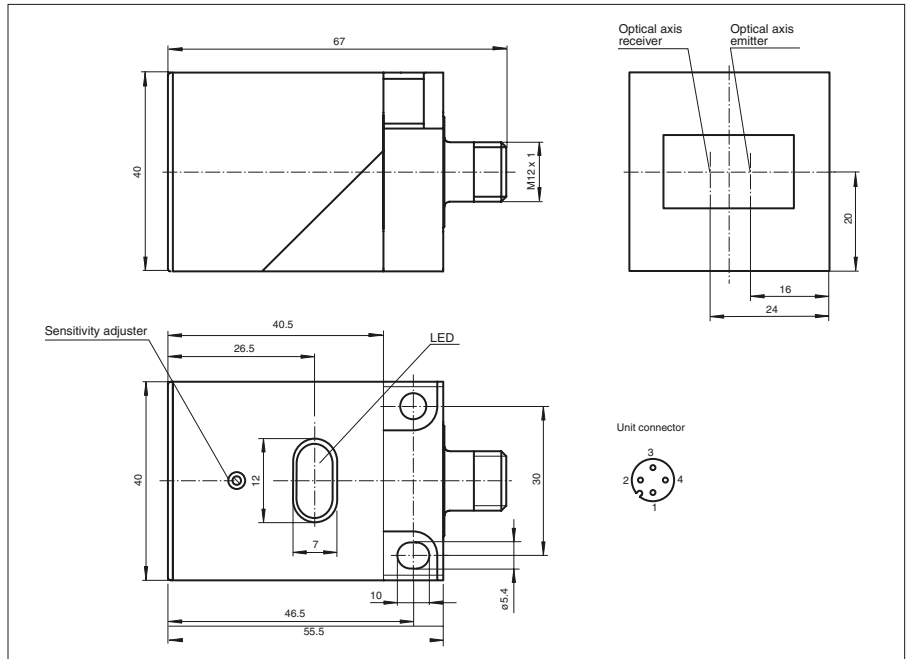
**OBS6000-L2-E5-V1**

Retroreflective sensor  
with 4-pin, M12 connector

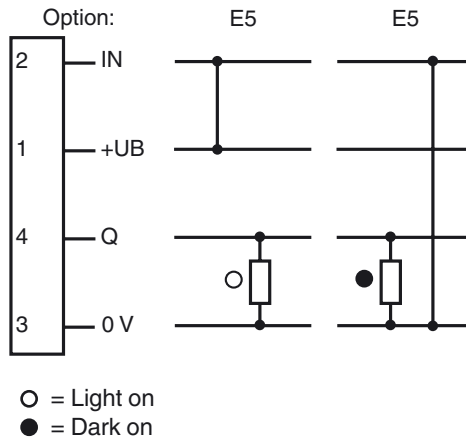
**Features**

- Glare protected with polarization filter
- Visible red light
- Positioning of the sensor head is possible in two planes
- Multitude of mounting possibilities
- Mounting only with one tool: the screwdriver
- Light/dark ON, programmable

**Dimensions**



**Electrical connection**



Release date: 2019-11-27 14:20 Date of issue: 2019-11-27 049791\_eng.xml

Refer to "General Notes Relating to Pepperl+Fuchs Product Information".

Pepperl+Fuchs Group  
www.pepperl-fuchs.com

USA: +1 330 486 0001  
fa-info@us.pepperl-fuchs.com

Germany: +49 621 776 1111  
fa-info@de.pepperl-fuchs.com

Singapore: +65 6779 9091  
fa-info@sg.pepperl-fuchs.com

**Technical data****General specifications**

Effective detection range	0 ... 6000 mm
Reflector distance	600 ... 6000 mm
Threshold detection range	9 m (with H85 reflector)
Light source	LED
Light type	modulated visible red light
Polarization filter	no
Ambient light limit	15000 Lux

**Indicators/operating means**

Function indicator	LED yellow: switching state LED red: pre-fault indication
Control elements	sensitivity adjustment

**Electrical specifications**

Operating voltage	$U_B$	10 ... 30 V DC
Ripple		10 %
No-load supply current	$I_0$	$\leq 20$ mA

**Input**

Control input	light on +UB dark on: 0 V
---------------	------------------------------

**Output**

Switching type	light/dark on	
Signal output	1 PNP output, short-circuit protected, reverse polarity protected, open collector	
Switching voltage	max. 30 V DC	
Switching current	max. 250 mA	
Voltage drop	$U_d$	$\leq 1.5$ V
Switching frequency	$f$	$\leq 200$ Hz
Response time		$\leq 2.5$ ms

**Conformity**

Product standard	EN 60947-5-2
------------------	--------------

**Ambient conditions**

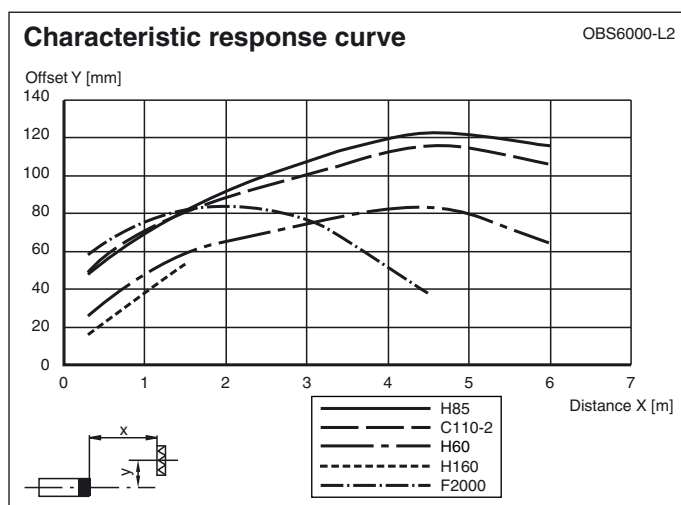
Ambient temperature	-25 ... 70 °C (-13 ... 158 °F)
Storage temperature	-40 ... 80 °C (-40 ... 176 °F)

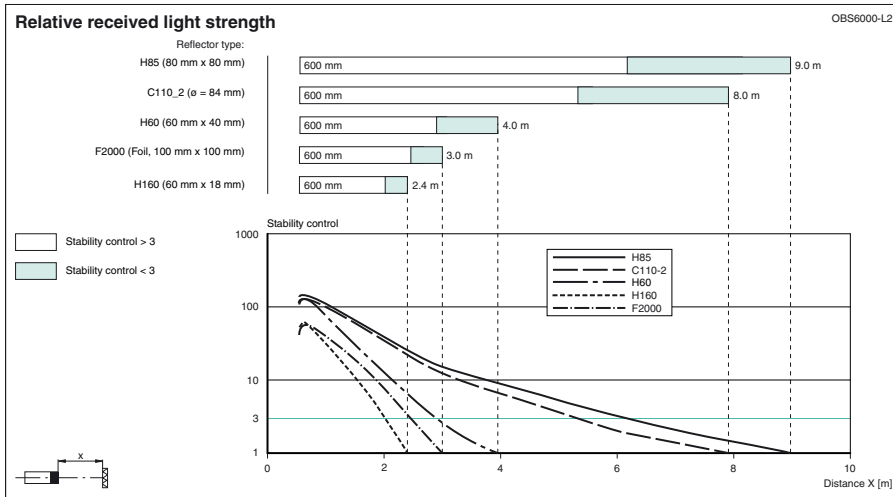
**Mechanical specifications**

Housing width	40 mm
Housing height	40 mm
Housing depth	55.5 mm
Degree of protection	IP67
Connection	4-pin, M12 x 1 connector
Material	
Housing	PBT
Optical face	scratch resistant plastic lens
Mass	111 g

**Approvals and certificates**

CCC approval	CCC approval / marking not required for products rated $\leq 36$ V
Approvals	CE

**Curves/Diagrams**



Release date: 2019-11-27 14:20 Date of issue: 2019-11-27 049791\_eng.xml

Refer to "General Notes Relating to Pepperl+Fuchs Product Information".

Pepperl+Fuchs Group  
www.pepperl-fuchs.com

USA: +1 330 486 0001  
fa-info@us.pepperl-fuchs.com

Germany: +49 621 776 1111  
fa-info@de.pepperl-fuchs.com

Singapore: +65 6779 9091  
fa-info@sg.pepperl-fuchs.com