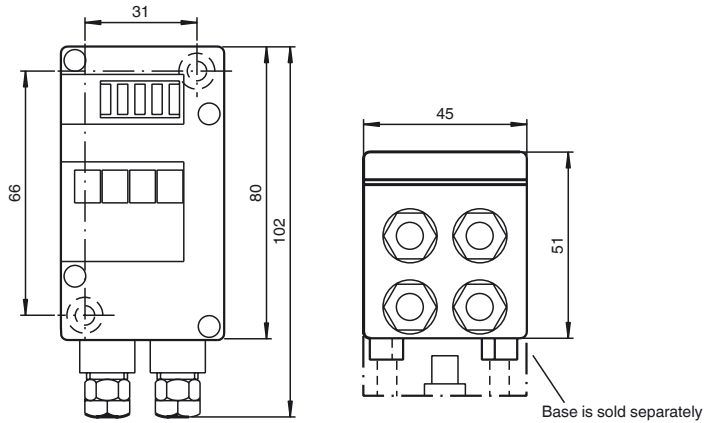




**Dimensions**



**Electrical connection**

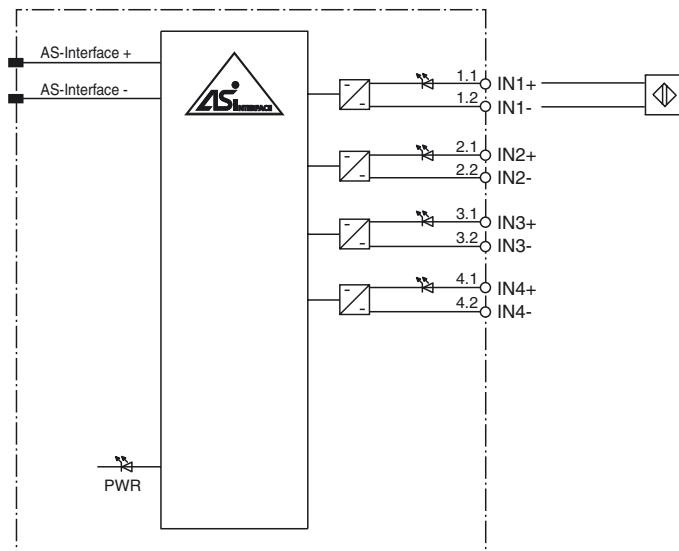
**Model number**

VAA-4E-G4-N

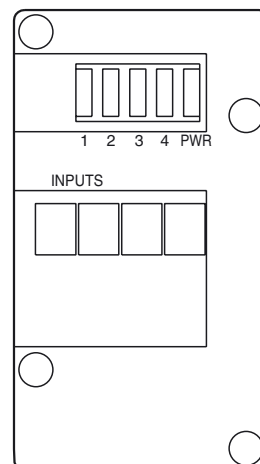
G4 module IP67  
4 inputs (NAMUR)

**Features**

- AS-Interface certificate
- Degree of protection IP67
- Flat or round cable connection (via standardized EMS base, not included with delivery)
- Cable piercing method for flat cable
- Inputs in accordance with IEC 60947-5-6 (NAMUR, DIN 19234)
- Function display for bus and inputs
- Lead monitoring of inputs that can be switched off selectively by channel



**Indicating / Operating means**



Release date: 2019-01-09 10:19 Date of issue: 2019-01-09 050073\_eng.xml

**Technical data****General specifications**

Slave type	Standard slave
AS-Interface specification	V2.0
Required master specification	≥ V2.0
UL File Number	E87056

**Indicators/operating means**

LED PWR	AS-Interface voltage; LED green
LED IN	4 dual LED yellow/red yellow: switching state (input) red: lead breakage red and yellow: line short-circuit

**Electrical specifications**

Rated operating voltage	$U_e$	26.5 ... 31.6 V from AS-Interface
Rated operating current	$I_e$	≤ 40 mA
Protection class		III

**Input**

Number/Type	4 Inputs for NAMUR sensors
Supply	from AS-Interface
Voltage	8 V
Switching point	OUT ≥ 1.8 mA ON ≤ 1.5 mA
Line fault detection	lead breakage: ≤ 0.15 mA lead short-circuit: ≥ 6 mA

**Programming instructions**

Profile	S-0.F
IO code	0
ID code	F

Data bits (function via AS-Interface)	input	output
D0	IN1	-
D1	IN2	-
D2	IN3	-
D3	IN4	-

**Parameter bits (programmable via AS-i) function**

P0	lead monitoring IN1 P0 = 1 (default settings), monitoring deactivated P0 = 0, monitoring activated
P1	lead monitoring IN2 P1 = 1 (default settings), monitoring deactivated P1 = 0, monitoring activated
P2	lead monitoring IN3 P2 = 1 (default settings), monitoring deactivated P2 = 0, monitoring activated
P3	lead monitoring IN4 P3 = 1 (default settings), monitoring deactivated P3 = 0, monitoring activated

**Ambient conditions**

Ambient temperature	-25 ... 60 °C (-13 ... 140 °F)
Storage temperature	-25 ... 85 °C (-13 ... 185 °F)

**Mechanical specifications**

Degree of protection	IP67
Connection	cable piercing method or terminal compartment yellow flat cable or standard round cable inputs: M12 x 1.5 cable gland and cage tension spring terminals
Mass	180 g
Mounting	DIN rail or screw mounting

**Compliance with standards and directives**

Standard conformity	
Degree of protection	EN 60529

**Function**

The VAA-4E-G4-N is an AS-Interface coupling module with 4 inputs for sensors per DIN 19234 (NAMUR), which can be monitored for lead breakage and short circuit (see note).

The IP67 rated G4 module is especially suitable for rough conditions. Sensors attach to cable glands and cage tension spring terminals. For pre-addressing the module it can be plugged directly onto the adapter of the handheld programming device VBP-HH1.

Both flat and round cables can be used for the connection of the AS-Interface transmission line. Use the U-G1F or U-G1FF base for AS-Interface flat cables. The connection to the AS-Interface cable is established via the standardised EMS interface (cable piercing method). The U-G1F base can also be used as IP67 AS-Interface distribution box. Use the U-G1FF base, when modules with outputs are mounted in series with the module. The flat cable for external power supply can be placed in this base, since the module does not access the supply line.

Use the U-G1P or U-G1PP base for round cables. These bases have the same functionality as the U-G1F or the U-G1FF bases.

**Note:**

Lead breakage/short circuit monitoring is activated or deactivated per channel, by means of the parameter bits P0 ... P3. All error conditions are linked by an OR-logic-operation. In a failure case, the AS-Interface master indicates an error and the module disconnects from the AS-Interface, while the watchdog is activated.

**Accessories****VBP-HH1-V3.0-KIT**

AS-Interface Handheld with accessory

**VBP-HH1**

Handheld programming device

**VAZ-G4-B**

Blind plug PG7

**VAZ-G4-B1**

Blind plug M12

**Matching system components****U-G1F**

AS-Interface module mounting base for connection to flat cable (AS-Interface)

**U-G1FA**

AS-Interface module mounting base with addressing jack for connection to flat cable (AS-Interface)

**U-G1P**

AS-Interface module mounting base for connection to round cable (AS-Interface)