



### Model Number

NBN3-F25-Z8-0,14

### Features

- For installation in housing
- Direct mounting on standard actuators

### Accessories

#### BT32

Activator for F25 series

#### BT32XS

Activator for F25 series

#### BT32XAS

Activator for F25 series

#### BT33

Activator for F25 series

#### BT34

Activator for F25 series

## Technical Data

### General specifications

Switching element function		Dual (NO)
Rated operating distance	$s_n$	3 mm
Installation		flush mountable
Output polarity		DC
Assured operating distance	$s_a$	0 ... 2.43 mm
Actual operating distance	$s_r$	2.7 ... 3.3 mm typ.
Reduction factor $r_{Al}$		0.5
Reduction factor $r_{Cu}$		0.4
Reduction factor $r_{304}$		1
Reduction factor $r_{S37}$		1.1

### Nominal ratings

Operating voltage	$U_B$	6 ... 60 V DC
Switching frequency	$f$	0 ... 500 Hz
Hysteresis	$H$	typ. 0.2 %
Reverse polarity protection		reverse polarity tolerant
Short-circuit protection		no
Voltage drop	$U_d$	$\leq 5$ V
Voltage drop at $I_L$		
Voltage drop $I_L = 10$ mA, switching element 0.8 ... 4.8 V typ. 3.8 V on $U_d$		

Operating current	$I_L$	4 ... 100 mA
Lowest operating current	$I_m$	4 mA
Off-state current	$I_r$	0 ... 1 mA typ. 0.7 mA
Time delay before availability	$t_v$	$\leq 1$ ms
Switching state indicator		LED, yellow

### Ambient conditions

Ambient temperature		-25 ... 70 °C (-13 ... 158 °F)
---------------------	--	--------------------------------

### Mechanical specifications

Connection type		cablc PVC , 180 mm
Core cross-section		0.14 mm <sup>2</sup>
Housing material		PBT
Sensing face		PBT
Degree of protection		IP67
Tightening torque, fastening screws		M5 x 25 : 2.7 Nm
Note		Installation in housing

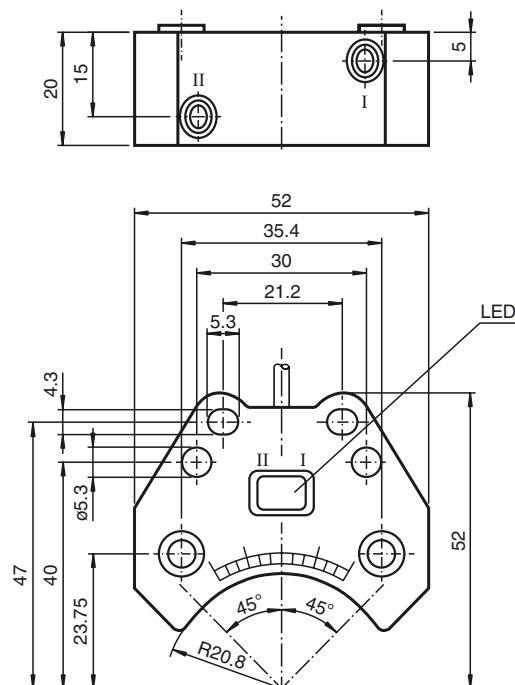
### Compliance with standards and directives

Standard conformity		
Standards		EN 60947-5-2:2007 IEC 60947-5-2:2007

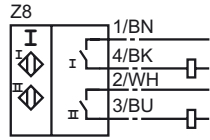
### Approvals and certificates

UL approval		cULus Listed, General Purpose
CSA approval		cCSAus Listed, General Purpose

## Dimensions



Electrical Connection



Release date: 2016-02-11 17:20 Date of issue: 2016-02-11 085120\_eng.xml