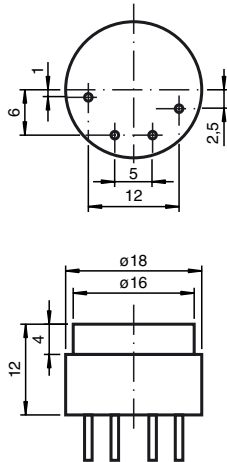


Basic series
5 mm embeddable



CE

General specifications	
Switching element function	PNP Break function
Rated operating distance s_n	5 mm
Installation	embeddable
Assured operating distance s_a	0 ... 4,05 mm
Reduction factor r_{Al}	0,4
Reduction factor r_{Cu}	0,3
Reduction factor r_{V2A}	0,7
Reduction factor r_{St37}	1
Nominal ratings	
Operating voltage U_B	10 ... 30 V
Switching frequency f	0 ... 1000 Hz
Reverse polarity protection	Protected against reverse polarity
Short-circuit protection	pulsing
Voltage drop U_d	≤ 3 V
Operating current I_L	0 ... 100 mA
Off-state current I_r	0 ... 0,5 mA typ. 0,1 μ A at 25 °C
No-load supply current I_0	≤ 13 mA
Indication of the switching state	
Standard conformity	
Standards	EN 60947-5-2
Ambient conditions	
Ambient temperature	-25 ... 70 °C (248 ... 343 K)
Mechanical specifications	
Connection type	soldering pins
Core cross-section	
Housing material	PA 6.6
Sensing face	PA 6.6
Protection degree	IP00
Note	

Connection type:

