



### Model Number

NJ2-V3-N-Y89557

### Features

- Comfort series
- 2 mm flush

## Technical Data

### General specifications

Switching element function		NAMUR, NC
Rated operating distance	$s_n$	2 mm
Installation		flush
Output polarity		NAMUR
Assured operating distance	$s_a$	0 ... 1.62 mm
Reduction factor $r_{Al}$		0.25
Reduction factor $r_{Cu}$		0.2
Reduction factor $r_{304}$		0.7

### Nominal ratings

Nominal voltage	$U_o$	8 V
Switching frequency	$f$	0 ... 1000 Hz
Hysteresis	$H$	typ. %
Current consumption		
Measuring plate not detected		$\geq 3$ mA
Measuring plate detected		$\leq 1$ mA

### Standard conformity

EMC in accordance with	IEC / EN 60947-5-2:2004
Standards	DIN EN 60947-5-6 (NAMUR)

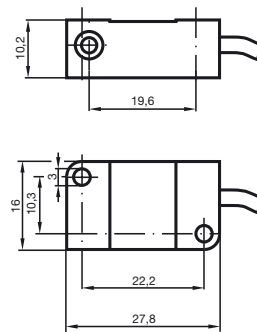
### Ambient conditions

Ambient temperature	-25 ... 100 °C (-13 ... 212 °F)
---------------------	---------------------------------

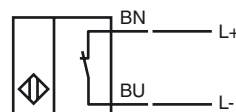
### Mechanical specifications

Core cross-section	0.14 mm <sup>2</sup>
Housing material	PBT
Sensing face	PBT
Degree of protection	IP67

## Dimensions



## Electrical Connection



**ATEX**

Data for Ex areas

Effective internal inductivity	$C_i$	$\leq 40 \text{ nF}$
Effective internal inductance	$L_i$	$\leq 35 \text{ }\mu\text{H}$

Release date: 2015-02-24 11:22 Date of issue: 2015-02-25 089557\_eng.xml