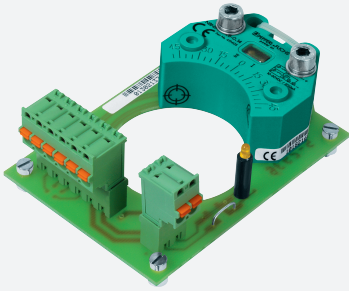


# Inductive sensor

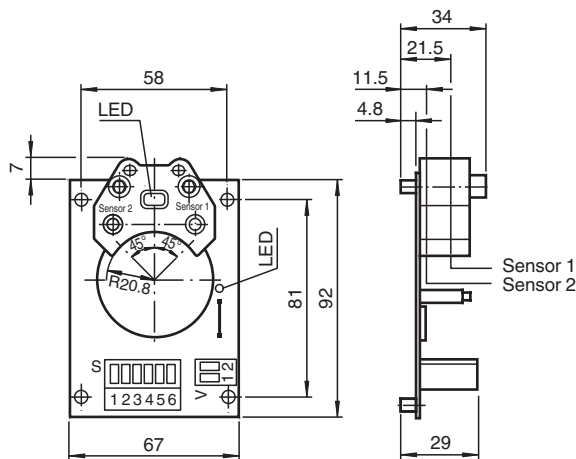
## PL1-F25-E8-K



- For installation in housing
- PL1... with valve connection
- Valve LEDs disconnectable (wire jumper)
- Direct mounting on standard actuators



### Dimensions



### Technical Data

General specifications		
Switching function		2 x normally open (NO)
Output type		PNP
Rated operating distance	$s_n$	3 mm
Installation		flush mountable
Output polarity		DC
Assured operating distance	$s_a$	0 ... 2.43 mm
Actual operating distance	$s_r$	2.6 ... 2.6 mm typ.
Reduction factor $r_{AI}$		0.5
Reduction factor $r_{304}$		1
Reduction factor $r_{St37}$		1.1
Output type		3-wire
Nominal ratings		
Operating voltage	$U_B$	10 ... 30 V DC
Switching frequency	$f$	0 ... 100 Hz
Hysteresis	$H$	typ. 5 %
Reverse polarity protection		reverse polarity protected

Release date: 2022-06-21 | Date of issue: 2022-06-21 | Filename: 095096\_eng.pdf

Refer to "General Notes Relating to Pepperl+Fuchs Product Information".

Pepperl+Fuchs Group  
www.pepperl-fuchs.com

USA: +1 330 486 0001  
fa-info@us.pepperl-fuchs.com

Germany: +49 621 776 1111  
fa-info@de.pepperl-fuchs.com

Singapore: +65 6779 9091  
fa-info@sg.pepperl-fuchs.com

PEPPERL+FUCHS

## Technical Data

Short-circuit protection		pulsing
Voltage drop	$U_d$	$\leq 3\text{ V}$
Operating current	$I_L$	0 ... 200 mA
Off-state current	$I_r$	0 ... 0.5 mA typ. 0.1 $\mu\text{A}$ at 25 °C
No-load supply current	$I_0$	$\leq 25\text{ mA}$
Time delay before availability	$t_v$	$\leq 500\text{ ms}$
Operating voltage indicator		LED, green
Switching state indicator		LED, yellow
Valve status indicator		LED, yellow

### Compliance with standards and directives

Standard conformity		
Standards		EN 60947-5-2:2007 IEC 60947-5-2:2007

### Ambient conditions

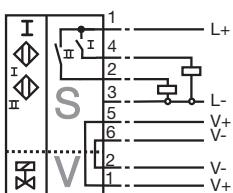
Ambient temperature		-25 ... 70 °C (-13 ... 158 °F)
Storage temperature		-40 ... 85 °C (-40 ... 185 °F)

### Mechanical specifications


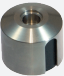
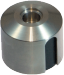


Connection (system side)		Cage tension spring terminals
Core cross section (system side)		up to 2.5 mm <sup>2</sup>
Connection (valve side)		Cage tension spring terminals
Core cross section (valve side)		up to 2.5 mm <sup>2</sup>
Housing material		PBT
Sensing face		PBT
Degree of protection		IP20

## Connection

PL1-...-E8



## Accessories

	<b>BT32</b>	Activator for F25 series
	<b>BT32XS</b>	Activator for F25 series
	<b>BT32XAS</b>	Activator for F25 series
	<b>BT33</b>	Activator for F25 series
	<b>BT34</b>	Activator for F25 series

Release date: 2022-06-21 Date of issue: 2022-06-21 Filename: 095096\_eng.pdf

Refer to "General Notes Relating to Pepperl+Fuchs Product Information".