

**Model Number**

PL4-F25-E8-K

**Features**

- For installation in housing
- Pluggable cage clamp terminals
- PL4... with 2 valve connections
- Valve LEDs disconnectable (wire jumper)
- Direct mounting on standard actuators

**Accessories**

- BT32**  
Activator for F25 series
- BT32XS**  
Activator for F25 series
- BT32XAS**  
Activator for F25 series
- BT33**  
Activator for F25 series
- BT34**  
Activator for F25 series

**Technical Data**

**General specifications**

Switching element function	PNP	Dual NO
Rated operating distance	$s_n$	3 mm
Installation		flush mountable
Output polarity		DC
Assured operating distance	$s_a$	0 ... 2.43 mm
Actual operating distance	$s_r$	2.6 ... 2.6 mm typ.
Reduction factor $r_{AI}$		0.5
Reduction factor $r_{304}$		1
Reduction factor $r_{S37}$		1.1

**Nominal ratings**

Operating voltage	$U_B$	10 ... 30 V DC
Switching frequency	$f$	0 ... 100 Hz
Hysteresis	$H$	typ. 5 %
Reverse polarity protection		reverse polarity protected
Short-circuit protection		pulsing
Voltage drop	$U_d$	$\leq 3$ V
Operating current	$I_L$	0 ... 200 mA
Off-state current	$I_r$	0 ... 0.5 mA typ. 0.1 $\mu$ A at 25 °C
No-load supply current	$I_0$	$\leq 25$ mA
Time delay before availability	$t_v$	$\leq 500$ ms
Operating voltage indicator		LED, green
Switching state indicator		LED, yellow
Valve status indicator		LED, yellow

**Ambient conditions**

Ambient temperature	-25 ... 70 °C (-13 ... 158 °F)
Storage temperature	-40 ... 85 °C (-40 ... 185 °F)

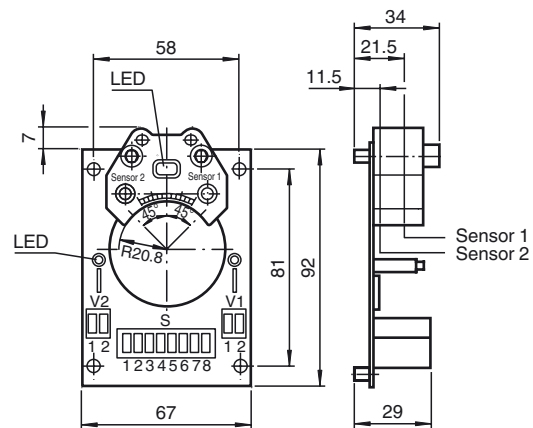
**Mechanical specifications**

Connection (system side)	Cage tension spring terminals
Core cross-section (system side)	up to 2.5 mm <sup>2</sup>
Connection (valve side)	Cage tension spring terminals
Core cross-section (valve side)	up to 2.5 mm <sup>2</sup>
Housing material	PBT
Sensing face	PBT
Degree of protection	IP20

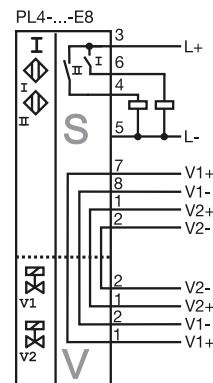
**Compliance with standards and directives**

Standard conformity	
Standards	EN 60947-5-2:2007 IEC 60947-5-2:2007

**Dimensions**



**Electrical Connection**



Release date: 2016-02-11 17:21 Date of issue: 2016-02-11 095100\_eng.xml