



CE
0102

Model Number

NCN3-F25-N4-Y89548

Technical Data

General specifications

Switching element function		DC	Dual NC
Rated operating distance	s_n	3 mm	
Installation		flush mountable	
Assured operating distance	s_a	0 ... 2.3 mm	
Reduction factor r_{Al}		0.46	
Reduction factor r_{Cu}		0.45	
Reduction factor r_{304}		1.25	
Reduction factor r_{Brass}		0.63	

Nominal ratings

Switching frequency	f	0 ... 100 Hz
Hysteresis	H	typ. 5 %
Reverse polarity protection		reverse polarity protected
Short-circuit protection		pulsing
Time delay before availability	t_v	≤ 1 ms
Switching state indicator		LED, yellow

Ambient conditions

Ambient temperature	-25 ... 100 °C (-13 ... 212 °F)
Storage temperature	-40 ... 100 °C (-40 ... 212 °F)

Mechanical specifications

Connection type	cable PVC, 5 m
Core cross-section	4 x 0.14
Housing material	PBT/PPS
Degree of protection	IP67

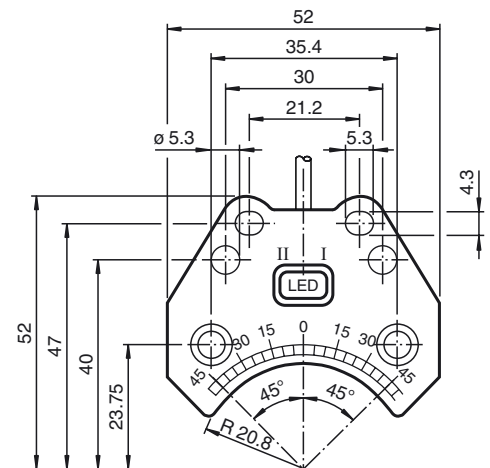
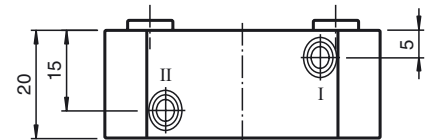
General information

Use in the hazardous area	see instruction manuals
Category	2G

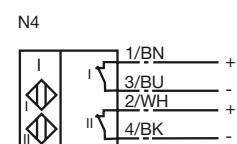
Compliance with standards and directives

Standard conformity	
NAMUR	EN 60947-5-6:2000 IEC 60947-5-6:1999
Standards	EN 60947-5-2:2007 IEC 60947-5-2:2007

Dimensions



Electrical Connection



ATEX 2G

Instruction

Device category 2G

EC-Type Examination Certificate

CE marking

ATEX marking

Directive conformity

Standards

Appropriate type

Effective internal capacitance C_i Effective internal inductance L_i

General

Ambient temperature

Installation, Commissioning

Maintenance

Specific conditions

Protection from mechanical danger

Manual electrical apparatus for hazardous areas

for use in hazardous areas with gas, vapour and mist

TÜV 99 ATEX 1479 X

CE 0102

⊕ II 2G EEx ia IIC T6

94/9/EG

EN 50014:1997, EN 50020:1994

Ignition protection "Intrinsic safety"

Use is restricted to the following stated conditions

NCN3-F25.-N4...

≤ 100 nF ; a cable length of 10 m is considered. The value is applicable for one sensor circuit.

≤ 100 μH ; a cable length of 10 m is considered. The value is applicable for one sensor circuit.

The apparatus has to be operated according to the appropriate data in the data sheet and in this instruction manual. The EC-Type Examination Certificate has to be observed. The special conditions must be adhered to!

The temperature ranges, according to temperature class, are given in the EC-Type Examination Certificate.

Laws and/or regulations and standards governing the use or intended usage goal must be observed. The intrinsic safety is only assured in connection with an appropriate related apparatus and according to the proof of intrinsic safety.

No changes can be made to apparatus, which are operated in hazardous areas. Repairs to these apparatus are not possible.

When used in the temperature range below -20 °C the sensor should be protected from knocks by the provision of an additional housing.