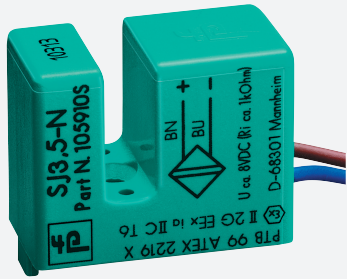


# Inductive slot sensor

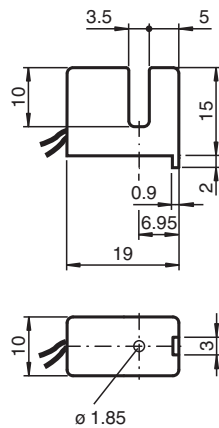
## SJ3,5-N-Y08944



- Special version
- Calibration to B+R segment disc
- 1. actual frequency



### Dimensions



### Technical Data

#### General specifications

|                              |                      |
|------------------------------|----------------------|
| Switching function           | Normally closed (NC) |
| Output type                  | NAMUR                |
| Slot width                   | 3.5 mm               |
| Depth of immersion (lateral) | 5 ... 7 typ. 6 mm    |
| Output type                  | 2-wire               |

#### Nominal ratings

|                              |       |   |
|------------------------------|-------|---|
| Nominal voltage              | $U_o$ | 8 V   |
| Operating voltage            | $U_B$ | 5 ... 25 V  |
| Switching frequency          | $f$   | 0 ... 500 Hz  |
| Hysteresis                   | $H$   | 0.41 ... 0.8  |
| Suitable for 2:1 technology  |       | yes, Reverse polarity protection diode not required |
| Current consumption          |       |   |
| Measuring plate not detected |       | $\geq 3$ mA at nominal voltage                      |
| Measuring plate detected     |       | $\leq 1$ mA at nominal voltage                      |

#### Functional safety related parameters

|                   |         |
|-------------------|---------|
| MTTF <sub>d</sub> | 13520 a |
|-------------------|---------|

Release date: 2020-08-13 Date of issue: 2020-08-13 Filename: 106593\_eng.pdf

Refer to "General Notes Relating to Pepperl+Fuchs Product Information".

Pepperl+Fuchs Group  
www.pepperl-fuchs.com

USA: +1 330 486 0001  
fa-info@us.pepperl-fuchs.com

Germany: +49 621 776 1111  
fa-info@de.pepperl-fuchs.com

Singapore: +65 6779 9091  
fa-info@sg.pepperl-fuchs.com

**PEPPERL+FUCHS**

## Technical Data

|   |   |
|---|---|
| Mission Time (T <sub>M</sub> )                  | 20 a  |
| Diagnostic Coverage (DC)                        | 0 %   |
| <b>Compliance with standards and directives</b> |   |
| Standard conformity                             |   |
| NAMUR   | EN 60947-5-6:2000<br>IEC 60947-5-6:1999   |
| Standards                                       | EN 60947-5-2:2007<br>EN 60947-5-2/A1:2012<br>IEC 60947-5-2:2007<br>IEC 60947-5-2 AMD 1:2012 |
| <b>Approvals and certificates</b>               |   |
| IECEX approval                                  |   |
| Equipment protection level Gb                   | IECEX PTB 11.0091X  |
| Equipment protection level Da                   | IECEX PTB 11.0091X  |
| Equipment protection level Mb                   | IECEX PTB 11.0091X  |
| ATEX approval                                   |   |
| Equipment protection level Gb                   | PTB 99 ATEX 2219 X  |
| Equipment protection level Da                   | PTB 99 ATEX 2219 X  |
| UL approval                                     | cULus Listed, General Purpose   |
| CSA approval                                    | cCSAus Listed, General Purpose  |
| <b>Ambient conditions</b>                       |   |
| Ambient temperature                             | -25 ... 100 °C (-13 ... 212 °F)   |
| <b>Mechanical specifications</b>                |   |
| Connection type                                 | flexible leads LiY , 220 mm<br>with connector sleeves , 7 mm                                |
| Core cross-section                              | 0.14 mm <sup>2</sup>  |
| Housing material                                | PBT   |
| Degree of protection                            | IP67  |
| <b>General information</b>                      |   |
| Use in the hazardous area                       | see instruction manuals   |

## Connection

