



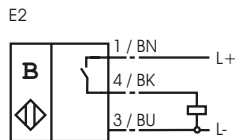
### Model Number

MB60-12GM50-E2-V1

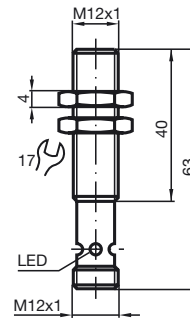
### Features

- Comfort series
- 60 mm embeddable
- Basic series
- 60 mm embeddable

### Connection



### Dimensions



### Technical Data

#### General specifications

Switching element function	PNP	Make function
Rated operating distance	$s_n$	60 mm
Installation		embeddable, in non-magn. metal
Output polarity		DC
Assured operating distance	$s_a$	10 ... 48.6 mm

#### Nominal ratings

Operating voltage	$U_B$	10 ... 30 V
Switching frequency	$f$	0 ... 5000 Hz
Reverse polarity protection		protected against reverse polarity
Short-circuit protection		pulsing
Voltage drop	$U_d$	$\leq 1.5$ V
Operating current	$I_L$	0 ... 300 mA
No-load supply current	$I_0$	$\leq 10$ mA
Indication of the switching state		Multihole-LED, yellow

#### Ambient conditions

Ambient temperature	-25 ... 75 °C (248 ... 348 K)
---------------------	-------------------------------

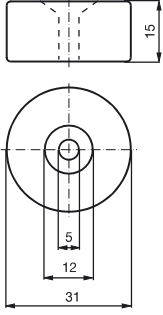
#### Mechanical specifications

Connection type	connector M12 x 1, 4-pin
Housing material	brass, nickel-plated
Sensing face	PA
Protection degree	IP67

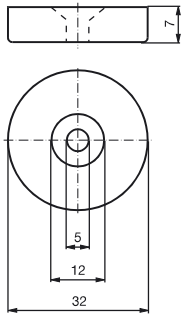
#### Compliance with standards and directives

Standard conformity	
Standards	EN 60947-5-2:2007 IEC 60947-5-2:2007

**Magnet DM 60-31-15**



**Magnet DM 25-32-07**



Release date: 2010-01-15 10:17 Date of issue: 2010-01-15 109768\_ENG.xml