



### Model Number

MC60-12GM50-1N-V1

### Features

- Comfort series
- 60 mm flush with permanent magnet DM 60-31-15

### Accessories

#### V1-G

Female connector, M12, 4-pin, field attachable

#### V1-W

Female connector, M12, 4-pin, field attachable

#### V1-G-N-2M-PUR

Female cordset, M12, 2-pin, NAMUR, PUR cable

#### V1-W-N-2M-PUR

Female cordset, M12, 2-pin, NAMUR, PUR cable

#### BF 12

Mounting flange, 12 mm

#### EXG-12

Quick mounting bracket with dead stop

## Technical Data

### General specifications

Switching element function		NAMUR, NO
Rated operating distance	$s_n$	60 mm
Installation		flush in non-magnetic metal
Output polarity		NAMUR
Assured operating distance	$s_a$	10 ... 60 mm

### Nominal ratings

Nominal voltage	$U_o$	8 V
Switching frequency	$f$	0 ... 5000 Hz
Current consumption		
Magnet detected		$\geq 2.5$ mA
Magnet not detected		$\leq 1$ mA
Switching state indicator		LED, yellow

### Standard conformity

EMC in accordance with	EN 60947-5-2
Standards	DIN EN 60947-5-6 (NAMUR)

### Ambient conditions

Ambient temperature	-25 ... 70 °C (-13 ... 158 °F)
---------------------	--------------------------------

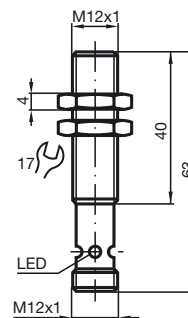
### Mechanical specifications

Housing material	brass, nickel-plated
Sensing face	PA
Degree of protection	IP67

### General information

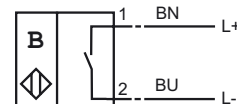
Use in the hazardous area	see instruction manuals
Category	2G

## Dimensions

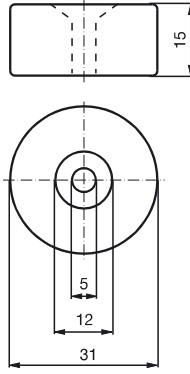


## Electrical Connection

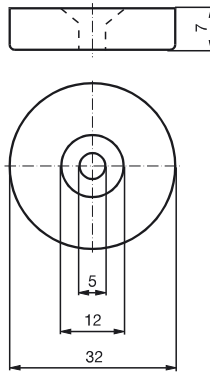
1N -V1



**Magnet DM 60-31-15**



**Magnet DM 25-32-07**



**ATEX 2G**

Instruction

**Device category 2G**

EC-Type Examination Certificate

CE marking

ATEX marking

Directive conformity

Standards

Appropriate type

Effective internal capacitance  $C_i$ Effective internal inductance  $L_i$ 

General

Installation, Commissioning

Maintenance

**Specific conditions**

Electrostatic charging

**Manual electrical apparatus for hazardous areas**

for use in hazardous areas with gas, vapour and mist

TÜV 01 ATEX 1718

CE 0102

II 2G EEx ib IIC T6

94/9/EG

EN 50014:1997, EN 50020:1994

Ignition protection "Intrinsic safety"

Use is restricted to the following stated conditions

MC60-12GM50-1N-V1

 $\leq 15 \text{ nF}$  ; a cable length of 10 m is considered. $\leq 35 \text{ }\mu\text{H}$  ; a cable length of 10 m is considered.

The apparatus has to be operated according to the appropriate data in the data sheet and in this instruction manual. The EC-Type Examination Certificate has to be observed. The special conditions must be adhered to!

Directive 94/9/EG and hence also EC-Type Examination Certificates apply in general only to the use of electrical apparatus under atmospheric conditions.

The use in ambient temperatures of  $> 60 \text{ }^\circ\text{C}$  was tested with regard to hot surfaces by the mentioned certification authority.

If the equipment is not used under atmospheric conditions, a reduction of the permissible minimum ignition energies may have to be taken into consideration.

Laws and/or regulations and standards governing the use or intended usage goal must be observed. The intrinsic safety is only assured in connection with an appropriate related apparatus and according to the proof of intrinsic safety.

No changes can be made to apparatus, which are operated in hazardous areas. Repairs to these apparatus are not possible.

Electrostatic charges must be avoided on the mechanical housing components. Dangerous electrostatic charges on the mechanical housing components can be avoided by incorporating these in the equipotential bonding.