



Safety light grid SLPC10-2-L

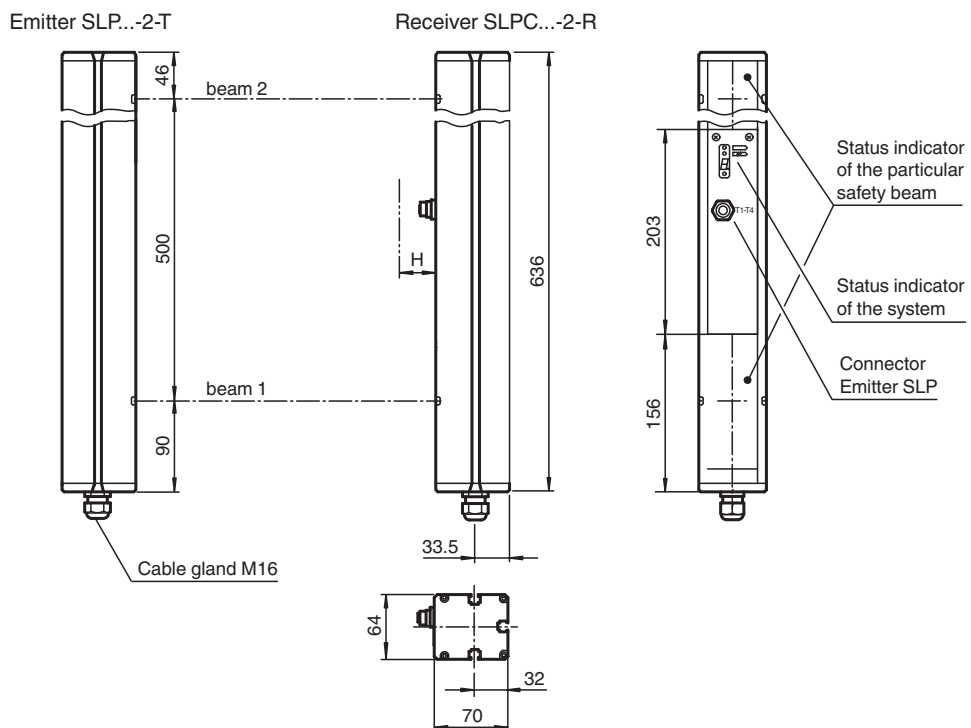


- Sensing range up to 10 m
- 2-radial design
- Beam spacing 500 mm
- Self-monitoring (type 4 according to IEC/EN 61496-1)
- Red transmission light
- Usable with or without start/restart disable
- Integrated relay monitor
- 7-segment diagnostic display
- Integrated function display
- Pre-fault indication
- OSSD outputs as semiconductor or relay outputs

Safety light grid with integrated control unit



Dimensions



Technical Data

System components

Emitter	SLP10-2-T
Receiver	SLPC10-2-R-L

General specifications

Effective detection range	0.2 ... 10 m
Light source	LED
Light type	modulated visible red light
Target size	static: 32 mm dynamic: 50 mm (at $v = 1.6$ m/s of the obstacle)

Technical Data

Beam spacing		500 mm
Number of beams		2
Operating mode		Start/restart disable, relay monitor,
Angle of divergence		< 5 °
Functional safety related parameters		
Performance level (PL)		PL e
Category		Cat. 4
Mission Time (T _M)		20 a
PFH _d		3.54 E-9
Type		4
Indicators/operating means		
Diagnostics indicator		7-segment display
Function indicator		LED red: per receiver channel off: interruption flashes: receiver continuously on: reception with sufficient stability control on the front plate: LED red: OSSD off LED green: OSSD on
Muting indicator		Indicator lamp
Pre-fault indicator		LED red next to receiver flashes
Control elements		10 DIP switch in receiver terminal compartment
Electrical specifications		
Operating voltage	U _B	24 V DC -15% / +25% , galvanically isolated
No-load supply current	I ₀	max. 250 mA
Protection class		III , IEC 61140
Input		
Activation current		approx. 10 mA
Activation time		0.03 ... 1 s
Test input		Reset-input for system test
Function input		Relay monitor, start release
Output		
Pre-fault indication output		1 PNP, +U _B -2 V, max. 300 mA
Safety output		2 separated fail safe semiconductor outputs
Signal output		1 PNP each, max. 300 mA for startup readiness, OSSD on, OSSD off, signals in parallel in the lamp socket
Switching voltage		Operating voltage -2 V
Switching current		max. 0.5 A
Response time		20 ms
Conformity		
Functional safety		ISO 13849-1
Product standard		EN 61496-1 ; IEC 61496-2
Approvals and certificates		
CE conformity		CE
Approvals		TÜV SÜD
Ambient conditions		
Ambient temperature		0 ... 50 °C (32 ... 122 °F)
Storage temperature		-20 ... 70 °C (-4 ... 158 °F)
Relative humidity		max. 95 % , not condensing
Mechanical specifications		
Degree of protection		IP65
Connection		M16 cable gland , terminal compartment with cage terminals, M12 connector for emitter, lamp socket for indicator lamp
Connection options		Further electrical connection options on request: Connector DIN 43 651 Hirschmann, emitter: 6-pin+PE, receiver: 11-pin+PE
Material		

Release date: 2020-06-05 Date of issue: 2020-10-06 Filename: 117564_eng.pdf

Refer to "General Notes Relating to Pepperl+Fuchs Product Information".

Pepperl+Fuchs Group
www.pepperl-fuchs.comUSA: +1 330 486 0001
fa-info@us.pepperl-fuchs.comGermany: +49 621 776 1111
fa-info@de.pepperl-fuchs.comSingapore: +65 6779 9091
fa-info@sg.pepperl-fuchs.com

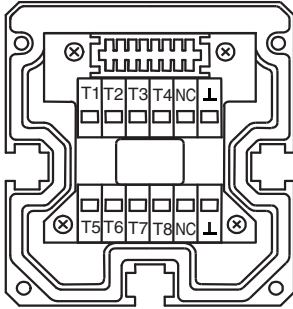
PEPPERL+FUCHS

Technical Data

Housing	extruded aluminum profile, RAL 1021 (yellow) coated
Optical face	Plastic pane
Mass	Per 2300 g

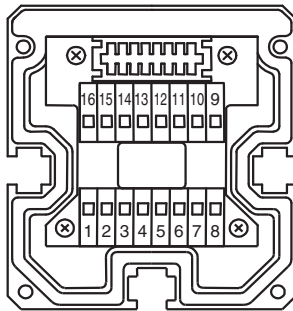
Connection

Emitter SLP



- T1 - Emitter channel 1
- T2 - Emitter channel 2
- ⏚ - 0 V

Receiver SLPC

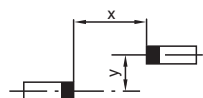
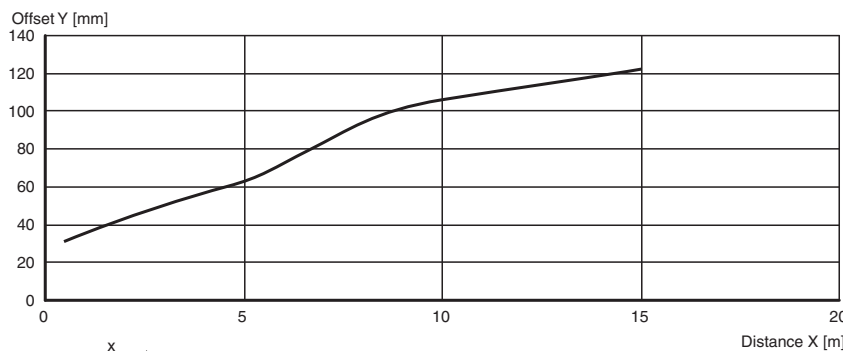


Receiver SLPC (semiconductor outputs)	Receiver SLPC/31 (Relay outputs)
	1 - Functional earth 2 - 0 V 3 - 24 V
4 - n.c. 5 - - 6 - + 7 - OSSD 1 8 - OSSD 2	
	4 -
	5 -
	6 -
	7 -
	8 -
	9 - Input, Relay monitor 10 - Input, Start release 11 - Input, Reset 12 - PNP-output, Soiled optics 13 - n.c. 14 - PNP-output, Startup readiness 15 - PNP-output, Indicator OSSD OFF 16 - PNP-output, Indicator OSSD ON

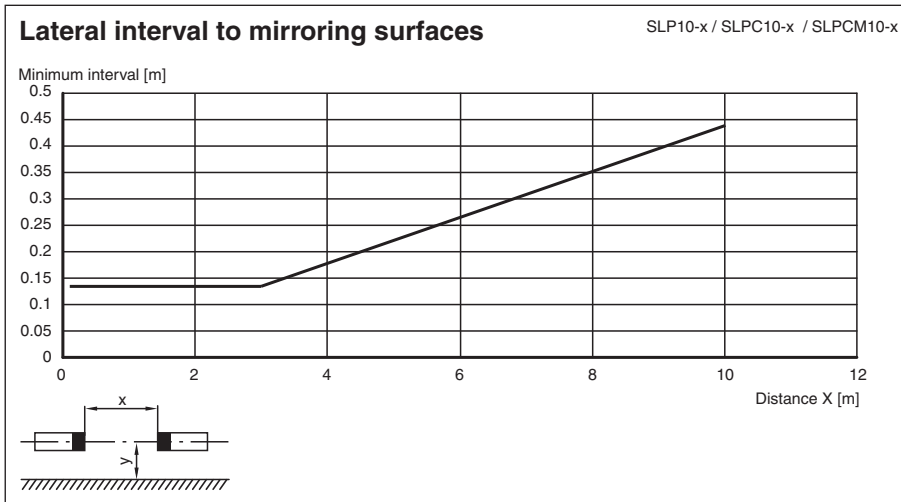
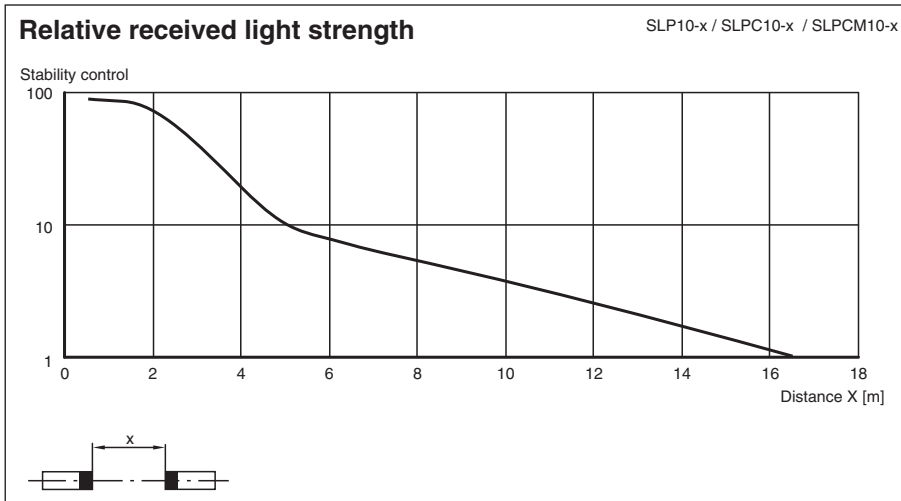
Characteristic Curve

Characteristic response curve


SLP10-x / SLPC10-x / SLPCM10-x



Release date: 2020-06-05 Date of issue: 2020-10-06 Filename: 117564_eng.pdf



Accessories

	PG SLP-2	Protective glass panes for SLP series
---	-----------------	---------------------------------------

Release date: 2020-06-05 Date of issue: 2020-10-06 Filename: 117564_eng.pdf

Refer to "General Notes Relating to Pepperl+Fuchs Product Information".

Pepperl+Fuchs Group
www.pepperl-fuchs.com

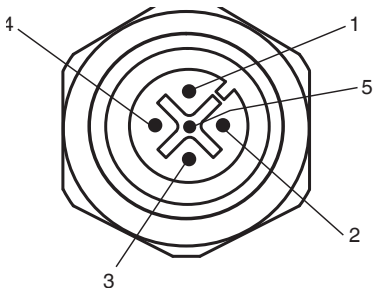
USA: +1 330 486 0001
fa-info@us.pepperl-fuchs.com

Germany: +49 621 776 1111
fa-info@de.pepperl-fuchs.com

Singapore: +65 6779 9091
fa-info@sg.pepperl-fuchs.com

Additional information

Socket assignment on the front side of the device



T1 - T4 transmitter control

Socket	Function
1	Transmitter channel 1
2	Transmitter channel 2
3	0 V

System accessories

- Mounting set MS SLP
- Profile alignment aid PA SLP/SLC
- Laser alignment aid BA SLP
- Ground pillar UC SLP/SLC
- Housing for pillar Enclosure UC SLP/SLC
- Collision protector Damping UC SLP/SLC
- Redirection mirror for multi-side protection of hazardous areas SLP-2-M

Accessories

Other suitable accessories can be found at www.pepperl-fuchs.com