

CE  
0102

### Model Number

MC60-12GM50-1N-V1-Y129698

### Features

- Comfort series
- 60 mm flush with permanent magnet DM 60-31-15

## Technical Data

### General specifications

Switching element function		NAMUR, NO
Rated operating distance	$s_n$	60 mm
Installation		flush
Output polarity		NAMUR
Assured operating distance	$s_a$	0 ... 60 mm

### Nominal ratings

Nominal voltage	$U_o$	8 V
Switching frequency	$f$	0 ... 1000 Hz
Current consumption		
Magnet detected		$\geq 3$ mA
Magnet not detected		$\leq 1$ mA
Switching state indicator		LED, yellow

### Ambient conditions

Ambient temperature		-25 ... 70 °C (-13 ... 158 °F)
---------------------	--	--------------------------------

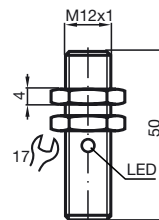
### Mechanical specifications

Connection type		Connector M12 x 1, 4-pin
Housing material		Stainless steel
Sensing face		Stainless steel
Degree of protection		IP67

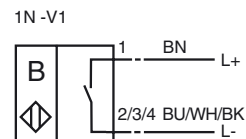
### Compliance with standards and directives

Standard conformity		
NAMUR		EN 60947-5-6:2000
Standards		EN 60947-5-2:2007

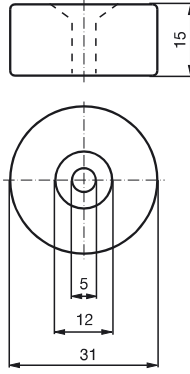
## Dimensions



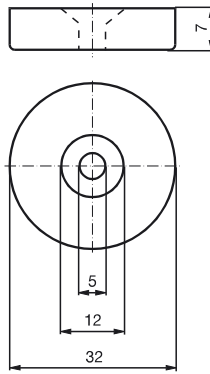
## Electrical Connection



**Magnet DM 60-31-15**



**Magnet DM 25-32-07**



Release date: 2015-02-26 08:44 Date of issue: 2015-02-26 129698\_eng.xml



**ATEX**

Data for Ex areas

Effective internal inductivity	$C_i$	$\leq 40$ nF
Effective internal inductance	$L_i$	$\leq 43$ $\mu$ H

Release date: 2015-02-26 08:44 Date of issue: 2015-02-26 129698\_eng.xml

Refer to "General Notes Relating to Pepperl+Fuchs Product Information".

Pepperl+Fuchs Group  
www.pepperl-fuchs.com

USA: +1 330 486 0001  
fa-info@us.pepperl-fuchs.com

Germany: +49 621 776 4411  
fa-info@de.pepperl-fuchs.com

Singapore: +65 6779 9091  
fa-info@sg.pepperl-fuchs.com