



Model Number

NBN30-L2-B3B-V1

Features

- Basic series
- A/B slave with extended addressing possibility for up to 62 slaves
- Sensor head bidirectional and rotatable
- NO/NC selectable
- Oscillator monitoring
- On/Off delay (disconnectable)

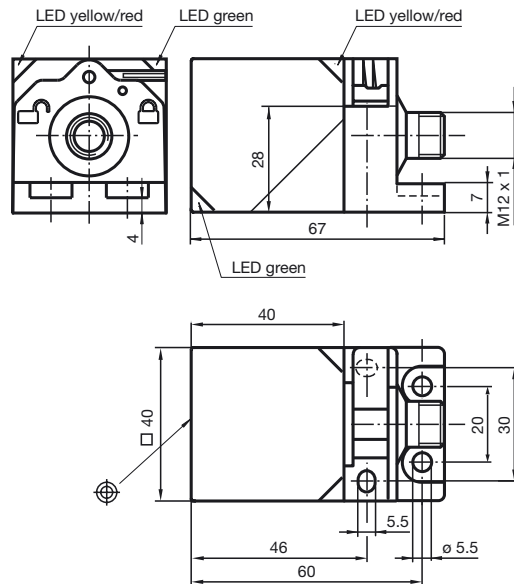
Accessories

- V1-W**
Female connector, M12, 4-pin, field attachable
- V1-W-2M-PUR**
Female cordset, M12, 4-pin, PUR cable
- MHW 01**
Modular mounting bracket
- MH 02-L**
Mounting aid
- V1-G-2M-PUR**
Female cordset, M12, 4-pin, PUR cable
- V1-G**
Female connector, M12, 4-pin, field attachable

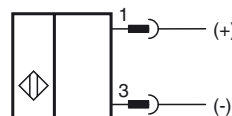
Technical Data

General specifications		
Switching function		Normally open/closed (NO/NC) programmable
Output type		AS-Interface
Rated operating distance	s_n	30 mm
Installation		non-flush
Assured operating distance	s_a	0 ... 24.3 mm
Reduction factor r_{Al}		0.3
Reduction factor r_{Cu}		0.3
Reduction factor r_{304}		0.75
Reduction factor r_{Brass}		0.38
Output type		2-wire
Nominal ratings		
Operating voltage	U_B	26.5 ... 31.9 V via AS-i bus system
Switching frequency	f	0 ... 100 Hz
Hysteresis	H	typ. 5 %
Reverse polarity protection		reverse polarity protected
Time delay before availability	t_v	≤ 1000 ms
Operating voltage indicator		LED green
Switching state indicator		dual-LED, yellow/red
Error indicator		dual-LED, yellow/red
Ambient conditions		
Ambient temperature		-25 ... 70 °C (-13 ... 158 °F)
Storage temperature		-40 ... 85 °C (-40 ... 185 °F)
Mechanical specifications		
Connection type		Connector plug M12 x 1, 4-pin
Housing material		PA
Sensing face		PA
Degree of protection		IP67
Mass		210 g
Compliance with standards and directives		
Standard conformity		
Standards		EN 60947-5-2:2007 IEC 60947-5-2:2007
Approvals and certificates		
UL approval		cULus Listed, General Purpose
CSA approval		cCSAus Listed, General Purpose
CCC approval		CCC approval / marking not required for products rated ≤36 V

Dimensions

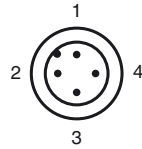


Electrical Connection



Release date: 2019-08-23 12:31 Date of issue: 2019-08-23 181227_eng.xml

Pinout



Wire colors in accordance with EN 60947-5-2

1	BN	(brown)
2	WH	(white)
3	BU	(blue)
4	BK	(black)

Programming Instructions

Adress 00 preset, alterable via Busmaster or programming units
 IO-Code 0
 ID-Code A
 ID1-Code 7
 ID2-Code E

Data bit

Bit	Function
D0	switching state ¹⁾ (0 = damped; 1 = undamped)
D1	not used
D2	oscillator monitoring (0= oscillator defective, 1=normal operation)
D3	not used

Parameter bit

Bit	Function
P0	ON / Off delay activated* / deactivated
P1	switching element function ²⁾ (0 = NC; 1 = NO)
P2	not used
P3	not used

¹⁾ Applies to NO funktion (P1 = 1; preset), with NC funktion (P1 = 0) reversed characteristics
²⁾ Default setting: NO

Indication depending on the operation mode

Symptoms	green LED (POWER)	red LED (FAULT)	Data bit D2
normal operation	on	off	1
Oscillator defect	flashing	flashing	0
no communication	off	on	1

On/off delay:

The on/off delay is preset and switched on (P0=1). On delay approx.15 ms, when P0=1 and NO function (P1=1). Off delay approx.15 ms, when P0=1 and NC function (P1=0).