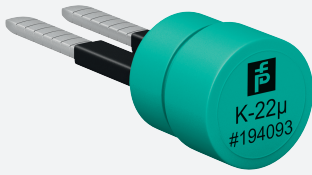


# HART Filter

## K-22 $\mu$



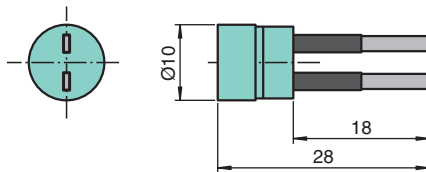
- 1-channel
- Parallel connection to HART loop
- Filters HART signal from control loop

## HART Filter

### Function

The capacitor is used to filter or suppress HART communication.

### Dimensions



### Technical Data

#### Electrical specifications

Capacitance	22 $\mu$ F , 16 V
Insertion loss	20 $\mu$ A , at 250 $\Omega$

#### Mechanical specifications

Dimensions	$\varnothing$ 10 x 28 mm (0.4 x 1.1 inch)
------------	---

Release date: 2020-04-30 Date of issue: 2020-04-30 Filename: 194093\_eng.pdf

Refer to "General Notes Relating to Pepperl+Fuchs Product Information".

Pepperl+Fuchs Group  
www.pepperl-fuchs.com

USA: +1 330 486 0002  
pa-info@us.pepperl-fuchs.com

Germany: +49 621 776 2222  
pa-info@de.pepperl-fuchs.com

Singapore: +65 6779 9091  
pa-info@sg.pepperl-fuchs.com

 **PEPPERL+FUCHS**