



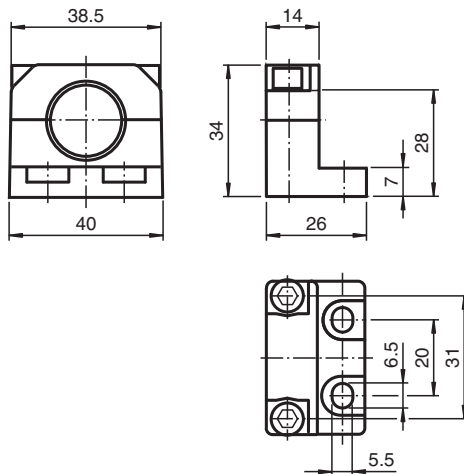
Mounting flange

BF-L3M

- Sturdy metallic version

Mounting flange

Dimensions



Technical Data

Ambient conditions

Ambient temperature	-40 ... 150 °C (-40 ... 302 °F)
---------------------	---------------------------------

Mechanical specifications

Material	powder coated diecast zinc
Mounting screw	stainless steel 1.4404 / AISI 316L
Mass	74 g

Release date: 2020-03-31 Date of issue: 2020-09-03 Filename: 208823_eng.pdf

Refer to "General Notes Relating to Pepperl+Fuchs Product Information".

Pepperl+Fuchs Group
www.pepperl-fuchs.com

USA: +1 330 486 0001
fa-info@us.pepperl-fuchs.com

Germany: +49 621 776 1111
fa-info@de.pepperl-fuchs.com

Singapore: +65 6779 9091
fa-info@sg.pepperl-fuchs.com

PF PEPPERL+FUCHS