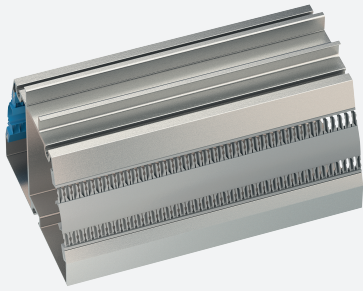


Profile Rail

K-DUCT-BU



- Cable trunking is integrated in the mounting profile
- Safe spacious separation of safe and hazardous signals
- No additional cable guides necessary
- Standard length 1.8 m (5.8 ft), simple to customize to application space
- With mounting aids

Profile rail, wiring comb field side, blue

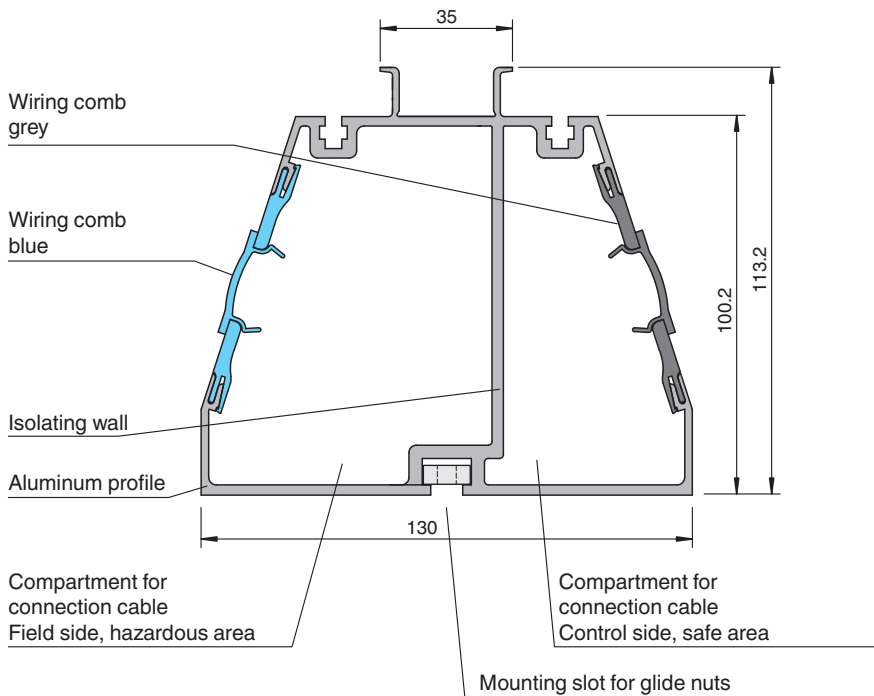
Function

The profile rail can be used to provide space-saving mounting for interface modules and accommodate the associated wiring. The system and field cables for safe and hazardous signals are easily installed in the integral cable ducts of the profile rail. Thus no additional cable guides are necessary.

The asymmetrical segmented connection compartment can be changed dependent on the required space by turning the profile rail. Please note that the wiring combs of different colors must be changed too.

In conjunction with K-System modules the profile rail can be mounted in Zone 2.

Dimensions



Technical Data

Mechanical specifications

Connection	
Field side	wiring comb , blue
Control side	wiring comb , grey

Release date: 2022-10-18 Date of issue: 2022-10-18 Filename: 223292_eng.pdf

Refer to "General Notes Relating to Pepperl+Fuchs Product Information".

Pepperl+Fuchs Group
www.pepperl-fuchs.com

USA: +1 330 486 0002
pa-info@us.pepperl-fuchs.com

Germany: +49 621 776 2222
pa-info@de.pepperl-fuchs.com

Singapore: +65 6779 9091
pa-info@sg.pepperl-fuchs.com

Technical Data

Material	profile rail: aluminum wiring comb: plastic
Mass	approx. 6.5 kg
Dimensions	130 x 113.2 x 1800 mm (5 x 4.46 x 71 inch)
Accessories	
Designation	provided accessories: mounting aids (glide nuts and glide nut retainers)

Release date: 2022-10-18 Date of issue: 2022-10-18 Filename: 223292_eng.pdf

Refer to "General Notes Relating to Pepperl+Fuchs Product Information".

Pepperl+Fuchs Group
www.pepperl-fuchs.com

USA: +1 330 486 0002
pa-info@us.pepperl-fuchs.com

Germany: +49 621 776 2222
pa-info@de.pepperl-fuchs.com

Singapore: +65 6779 9091
pa-info@sg.pepperl-fuchs.com