

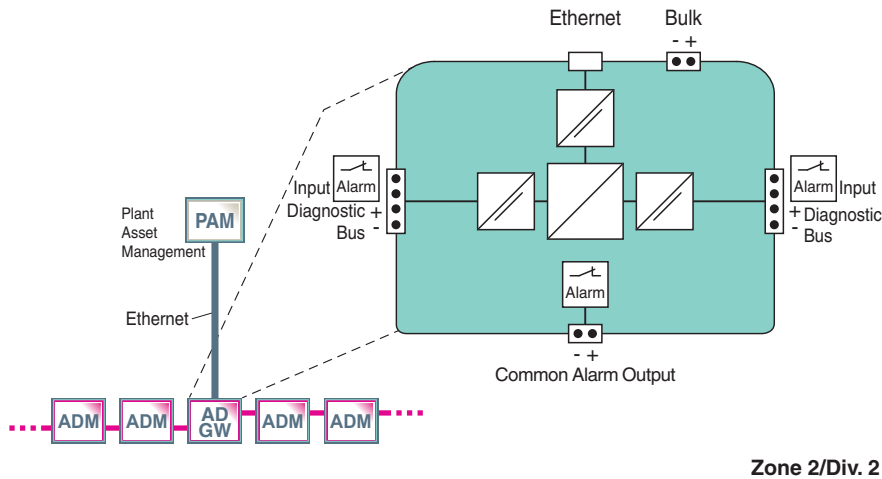


# Advanced Diagnostic Gateway KT-MB-GT2AD

- System integration kit for Advanced Diagnostics
- PCS integration via Ethernet
- Simple automatic setup of Advanced Diagnostics
- Common alarm handling
- For FOUNDATION Fieldbus and PROFIBUS PA



## Connection



## Technical Data

### Supply

Rated voltage	$U_r$	19.2 ... 35 V DC
Rated current	$I_r$	160 ... 90 mA
Power dissipation		3 W

### Ethernet Interface

Port	100 BASE-TX
Protocol	TCP/IP and UDP/IP
Services	ICMP, DHCP, AutoIP, HTTP
Connection type	RJ-45 socket, 8-pin
Transfer rate	100 MBit/s

### Diagnostic Bus

Number of Diagnostic Bus Channels	2
Type	RS-485
Number of Diagnostic Modules/Channel	31
Termination	integrated
Cable length/Channel	30 m

### Indicators/operating means

Release date: 2022-07-04 Date of issue: 2022-07-04 Filename: 225598\_eng.pdf

Refer to "General Notes Relating to Pepperl+Fuchs Product Information".

Pepperl+Fuchs Group  
www.pepperl-fuchs.com

USA: +1 330 486 0002  
pa-info@us.pepperl-fuchs.com

Germany: +49 621 776 2222  
pa-info@de.pepperl-fuchs.com

Singapore: +65 6779 9091  
pa-info@sg.pepperl-fuchs.com

PEPPERL+FUCHS

## Technical Data

LED ERR	red: Hardware fault
LED PWR	green: Power on
LINK/ACT	yellow
CH1, CH2	yellow: bus activity
<b>Galvanic isolation</b>	
All circuits/FE	functional insulation acc. to IEC 62103, rated insulation voltage 50 V <sub>eff</sub>
Ethernet/Diagnostic Bus	functional insulation acc. to IEC 62103, rated insulation voltage 50 V <sub>eff</sub>
Ethernet/Supply	functional insulation acc. to IEC 62103, rated insulation voltage 50 V <sub>eff</sub>
Diagnostic Bus/Supply	functional insulation acc. to IEC 62103, rated insulation voltage 50 V <sub>eff</sub>
Diagnostic Bus/Diagnostic Bus	functional insulation acc. to IEC 62103, rated insulation voltage 50 V <sub>eff</sub>
<b>Directive conformity</b>	
Electromagnetic compatibility	
Directive 2004/108/EC	EN 61326-1:2006
Low voltage	
Directive 73/23/EEC	EN 50178 (identical to EN 62103)
<b>Standard conformity</b>	
Galvanic isolation	IEC 62103
Degree of protection	IEC 60529
Climatic conditions	DIN IEC 721
Shock resistance	EN 60068-2-27
Vibration resistance	EN 60068-2-6
Ethernet	IEEE 802.3
<b>Ambient conditions</b>	
Ambient temperature	-40 ... 60 °C (-40 ... 140 °F)
Storage temperature	-40 ... 85 °C (-40 ... 185 °F)
Relative humidity	< 95 % non-condensing
Shock resistance	15 g 11 ms
Vibration resistance	1 g , 10 ... 150 Hz
Corrosion resistance	acc. to ISA-S71.04-1985, severity level G3
<b>Mechanical specifications</b>	
Housing material	Polycarbonate
Degree of protection	IP20
Mass	250 g
Mounting	DIN rail mounting

**Assembly**



**Matching System Components**

	<p><b>HD2-DM-A</b></p>	<p>Fieldbus Power Hub, Advanced Diagnostic Module</p>
--	------------------------	---

Release date: 2022-07-04 Date of issue: 2022-07-04 Filename: 225598\_eng.pdf

Refer to "General Notes Relating to Pepperl+Fuchs Product Information".

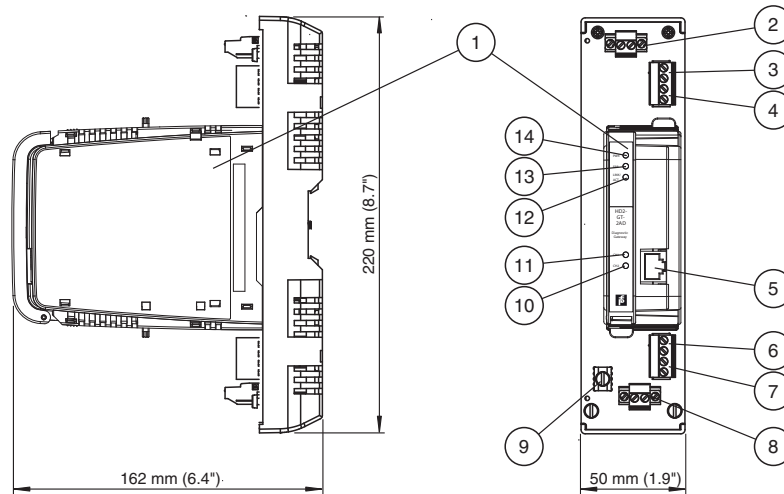
**Function**

The FieldConnex® Diagnostic Gateway is the interface between stationary Advanced Diagnostic Modules (ADM) and the control system. It enables data access via Ethernet to all ADM data via the Diagnostic Manager software.

The gateway configures itself and automatically detects ADMs. The Diagnostic Manager automatically finds gateways located in the same subnet. The setup of the diagnostic bus and all connected modules is completely automatic significantly simplifying engineering of FieldConnex Advanced Diagnostics.

**Additional Information**

**Dimensions**



\*all dimensions without tolerance indication

Description:

- |  |                               |
|--|-------------------------------|
| 1 HD2-GT2AD Module                           | 10 LED Channel 2 bus activity |
| 2 Connections for bulk power supply          | 11 LED Channel 1bus activity  |
| 3 Connection voltage free contact, Channel 1 | 12 LED LINK/ACT               |
| 4 Diagnostic bus, Channel 1                  | 13 LED Error                  |
| 5 RJ-45 socket, 8-pin                        | 14 LED Power supply           |
| 6 Connection voltage free contact, Channel 2 |                               |
| 7 Diagnostic bus, Channel 2                  |                               |
| 8 Alarm out                                  |                               |
| 9 Screen/ground connection clamp             |                               |

Release date: 2022-07-04 Date of issue: 2022-07-04 Filename: 225598\_eng.pdf