



Receptacles

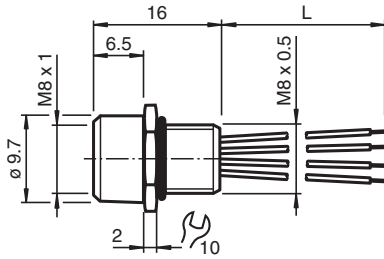
V3-M8-500

- Front/screw mounting
- Halogen-free stranded wires
- Degree of protection IP67

3-pin M8 receptacle



Dimensions



Dimension values see data table.
Image and drawing are generic for this device type and may deviate from the specific variant.

Technical Data

General specifications			
Connector 1			
Connection		socket	
Construction type		M8	
Style		straight	
Locking		screw connection	
Number of pins		3	
Coding		A-coded	
Connector 2			
Connection		cable end	
Electrical specifications			
Operating voltage	U_B	max. 48 V AC / 60 V DC	
Operating current	I_B	max. 4 A	
Volume resistance		< 3 m Ω	
Conformity			
Degree of protection		EN 60529	
Plug connection		connector M8 x 1 : IEC 61076-2-104	
Flammability		IEC 60332-1-2	
Halogen-free		IEC 60754-1	
Approvals and certificates			
UL File Number		E191152	

Release date: 2024-10-11 Date of issue: 2024-10-11 Filename: 226472_eng.pdf

Refer to "General Notes Relating to Pepperl+Fuchs Product Information".

Pepperl+Fuchs Group
www.pepperl-fuchs.com

USA: +1 330 486 0001
fa-info@us.pepperl-fuchs.com

Germany: +49 621 776 1111
fa-info@de.pepperl-fuchs.com

Singapore: +65 6779 9091
fa-info@sg.pepperl-fuchs.com

PEPPERL+FUCHS

Technical Data

Ambient conditions		
Ambient temperature		
Plug connector		-25 ... 85 °C (-13 ... 185 °F)
Cable, fixed		-40 ... 105 °C (-40 ... 221 °F)
Cable, flexing		-10 ... 105 °C (14 ... 221 °F)
Pollution degree		3
Mechanical specifications		
Plug connector		
Tightening torque		0.4 Nm
Mating cycles		min. 100
Degree of protection		IP67
Connection		tinned copper single leads, Ø1.5 ±0.1 mm
Cable		
Number of cores		3
Core cross section		0.25 mm ²
Cores color		Core 1: brown Core 3: blue Core 4: black
Core construction		7 x 0.2 mm Ø AWG 24
Length	L	500 mm
Installation		Front mounting M8 , tightening torque: 0.8 ... 1 Nm
Mass		12 g
Material		
Halogen-free		yes
Plug connector		
Screw connection		brass, nickel-plated
Seal		FKM
Contact surface		gold plated (Au)
Flammability		HB
Cable		
Core insulation		PVC
General information		
Scope of delivery		locknut not included

Connection Assignment

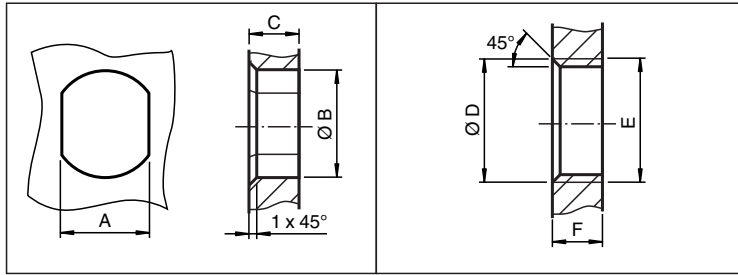


- 1) ————— BN
- 3) ————— BU
- 4) ————— BK

Release date: 2024-10-11 Date of issue: 2024-10-11 Filename: 226472_eng.pdf

Refer to "General Notes Relating to Pepperl+Fuchs Product Information".

Mounting



	A	B	C	D	E	F
M8	7.1 ^{+0.1}	Ø 8.2 ^{+0.1}	2 - 4 mm	-	M8x0.5	2 - 4 mm
M12	11 ^{+0.1}	Ø 12.2 ^{+0.1}	< 4 mm	-	M12x1	< 4.5 mm
M16	13.5 ^{+0.1}	Ø 16.1	< 4.5 mm	Ø 17 ^{+0.2}	M16x1.5	> 2.5 mm
M20	13.5 ^{+0.1}	Ø 20.1	-	Ø 20 ^{+0.2}	M20x1.5	< 6 mm
PG9	13.5 ^{+0.1}	Ø 15.3 ^{+0.1}	< 4.5 mm	Ø 16	PG9	> 2.5 mm
PG13.5	18.8 ^{+0.1}	Ø 20.5 ^{+0.1}	-	Ø 22 ^{±0.1}	PG13.5	-

Release date: 2024-10-11 Date of issue: 2024-10-11 Filename: 226472_eng.pdf

Refer to "General Notes Relating to Pepperl+Fuchs Product Information".

Pepperl+Fuchs Group
www.pepperl-fuchs.com

USA: +1 330 486 0001
fa-info@us.pepperl-fuchs.com

Germany: +49 621 776 1111
fa-info@de.pepperl-fuchs.com

Singapore: +65 6779 9091
fa-info@sg.pepperl-fuchs.com