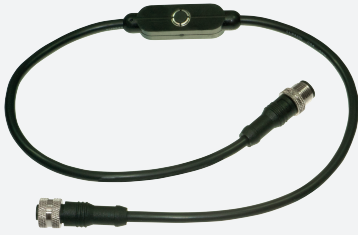
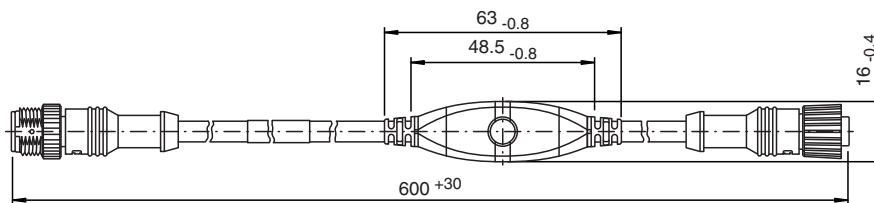


Programming unit UB-PROG4-V15



Programming unit for ultrasonic sensors with Teach-in input at pin 2

Dimensions



Technical Data

Mechanical specifications

Connection type	M12 x 1 , 5-pin
Material	
Housing	PVC
Cable	PVC
Mass	50 g

Release date: 2020-03-24 Date of issue: 2021-02-05 Filename: 235622_eng.pdf

Refer to "General Notes Relating to Pepperl+Fuchs Product Information".

Pepperl+Fuchs Group
www.pepperl-fuchs.com

USA: +1 330 486 0001
fa-info@us.pepperl-fuchs.com

Germany: +49 621 776 1111
fa-info@de.pepperl-fuchs.com

Singapore: +65 6779 9091
fa-info@sg.pepperl-fuchs.com

PF PEPPERL+FUCHS

Teach-In

For the teach-in process, the programming unit is connected between the cable connection box and the plug connection on the sensor. The button starts the Teach-in process. Pressing the button connects plug pins 2 and 3 to each other.

For a detailed description of the Teach-in process, refer to the sensor data sheet. The taught values are stored in the non-volatile memory. They are retained in the sensor after removing the programming unit and/or turning off the operating voltage.