



Model Number

NBB15-F148P10-E2-M-150MM-3DT04

Features

- 15 mm flush
- 3-wire DC
- Extended temperature range
- E1-Type approval

Technical Data

General specifications

| | | |
|------------------------------|-------|----------------|
| Switching element function | PNP | NO |
| Rated operating distance | s_n | 15 mm |
| Installation | | flush |
| Output polarity | | DC |
| Assured operating distance | s_a | 0 ... 12.15 mm |
| Reduction factor r_{Al} | | 0.45 |
| Reduction factor r_{Cu} | | 0.35 |
| Reduction factor r_{304} | | 0.8 |
| Reduction factor r_{Brass} | | 0.5 |

Nominal ratings

| | | |
|--------------------------------|-------|----------------------------|
| Operating voltage | U_B | 10 ... 60 V DC |
| Switching frequency | f | 0 ... 30 Hz |
| Hysteresis | H | 2 ... 20 % (typ. 3 %) |
| Reverse polarity protection | | reverse polarity protected |
| Short-circuit protection | | pulsing |
| Voltage drop | U_d | ≤ 1.5 V |
| Operating current | I_L | 0 ... 200 mA |
| Off-state current | I_r | ≤ 10 μ A |
| No-load supply current | I_0 | ≤ 10 μ A |
| Time delay before availability | t_v | ≤ 55 ms |
| Switching state indicator | | LED, yellow |

Functional safety related parameters

| | |
|--------------------------------|--------|
| MTTF _d | 1180 a |
| Mission Time (T _M) | 20 a |
| Diagnostic Coverage (DC) | 0 % |

Ambient conditions

| | |
|---------------------|--------------------------------|
| Ambient temperature | -40 ... 85 °C (-40 ... 185 °F) |
| Storage temperature | -40 ... 85 °C (-40 ... 185 °F) |

Mechanical specifications

| | |
|---------------------|--|
| Connection type | cable with Deutsch connector 150 mm |
| Connection assembly | Deutsch housing DT 04-3P-P004 Deutsch wedge W3P Deutsch contact 1060-16-0622 |
| Core cross-section | 0.75 mm ² |
| Housing material | anodized aluminum |
| Sensing face | PBT |
| Protection degree | IP67 / IP69K |

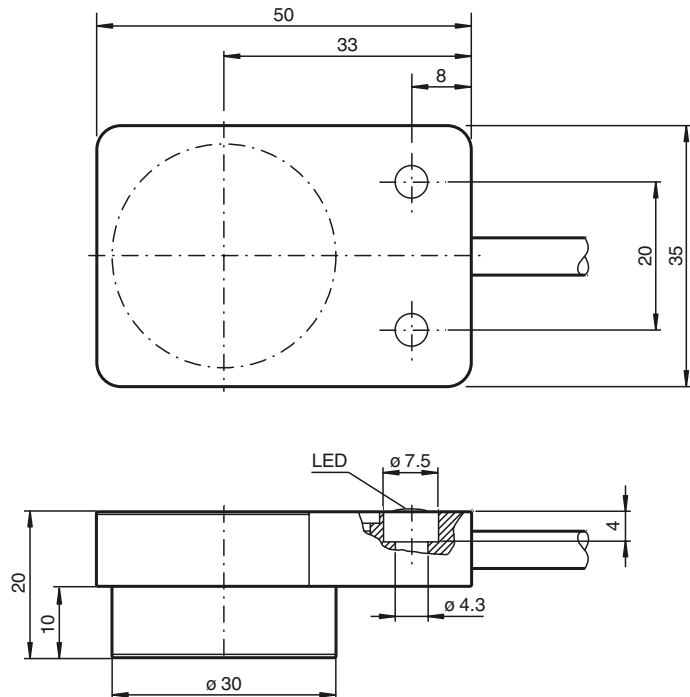
Compliance with standards and directives

| | |
|---------------------|---|
| Standard conformity | |
| Standards | EN 60947-5-2:2007 IEC 60947-5-2:2007 |

Approvals and certificates

| | |
|------------------|--------|
| E1 Type approval | 10R-04 |
|------------------|--------|

Dimensions



Electrical Connection

