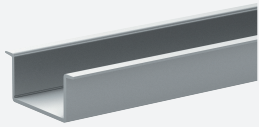


# DIN mounting rail

## UPR-MR



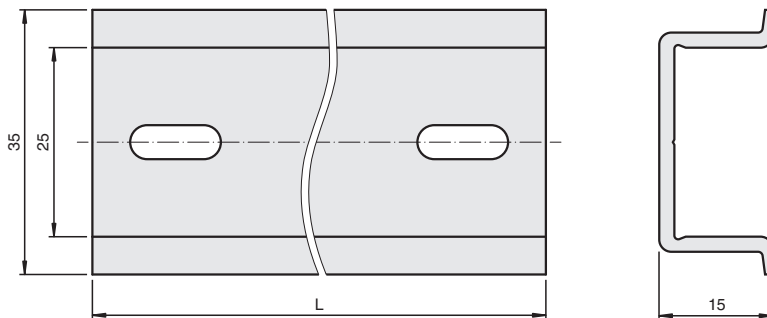
- 35 mm DIN mounting rail acc. to EN 60715:2001
- Standard length 2 m (6 foot), simple to customize to application space
- Slot for insert UPR-INS-\*\*
- Packaging unit: 2 pieces

35 mm DIN mounting rail, length: 2 m (packaging unit: 2 pieces)

## Function

The DIN mounting rail is used for mounting of K-System isolator modules. The insert UPR-INS-\*\* can be fixed by a slot in the DIN mounting rail. The component comes in 2 m segments but can be cut to any size. The DIN mounting rail UPR-MR and the insert UPR-INS-\*\* form the Power Rail.

## Dimensions



## Technical Data

### Mechanical specifications

Material	Aluminum
Mass	approx. 600 g
Dimensions	35 x 15 x 2000 mm (1.4 x 0.6 x 78.7 inch)

### General information

Packing unit	2 item(s)
--------------	-----------

### Accessories

Designation	- insert UPR-INS-03 - insert UPR-INS-05
-------------	--