

# Background suppression sensor

## GLV30-8-H-4575

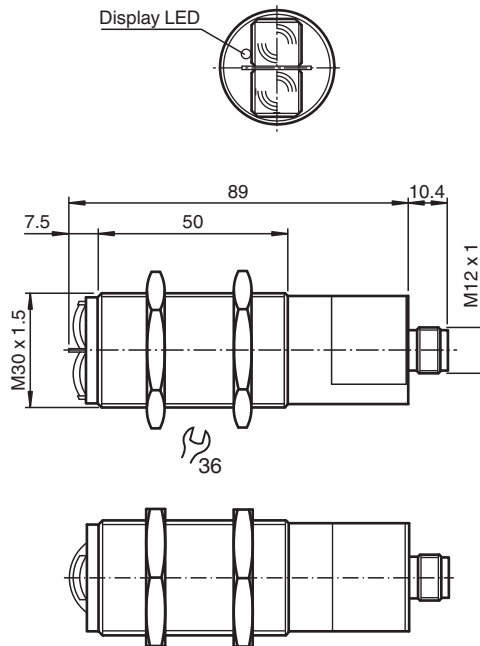


- M30 plastic housing
- Dark-On switching

Background suppression sensor



### Dimensions



### Technical Data

#### General specifications

Detection range	50 ... 750 mm
Background suppression	starts from 1000 mm on Kodak white

Release date: 2023-04-04 Date of issue: 2023-04-04 Filename: 249879\_eng.pdf

Refer to "General Notes Relating to Pepperl+Fuchs Product Information".

Pepperl+Fuchs Group  
www.pepperl-fuchs.com

USA: +1 330 486 0001  
fa-info@us.pepperl-fuchs.com

Germany: +49 621 776 1111  
fa-info@de.pepperl-fuchs.com

Singapore: +65 6779 9091  
fa-info@sg.pepperl-fuchs.com

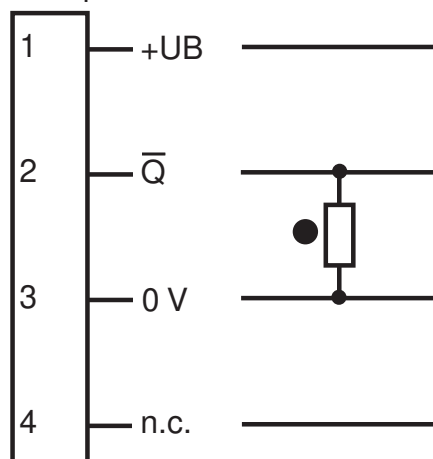
**PF** PEPPERL+FUCHS

## Technical Data

Light source	IRED	
Light type	modulated infrared light	
Black-white difference (6 %/90 %)	< 20 %	
Diameter of the light spot	30 mm at a distance of 1000 mm	
Opening angle	± 1 °	
Ambient light limit	30000 Lux	
<b>Indicators/operating means</b>		
Function indicator	LED yellow, lights up if receiver is not lit	
<b>Electrical specifications</b>		
Operating voltage	$U_B$	24 V DC ± 25 %
Ripple	10 %	
No-load supply current	$I_0$	35 mA
<b>Output</b>		
Switching type	dark-on	
Signal output	1 PNP, short-circuit protected, reverse polarity protected, open collector	
Switching voltage	max. 30 V DC	
Switching current	max. 200 mA	
Switching frequency	f	25 Hz
Response time	30 ms	
<b>Conformity</b>		
Product standard	EN 60947-5-2	
<b>Approvals and certificates</b>		
UL approval	cULus Listed, Class 2 Power Source, Type 1 enclosure	
CCC approval	CCC approval / marking not required for products rated ≤36 V	
Approvals	CE	
<b>Ambient conditions</b>		
Ambient temperature	-20 ... 60 °C (-4 ... 140 °F)	
Storage temperature	-20 ... 75 °C (-4 ... 167 °F)	
<b>Mechanical specifications</b>		
Degree of protection	IP67	
Connection	Plastic connector M12 x 1, 4-pin	
Material		
Housing	ABS	
Optical face	plastic lenses	
Mass	approx. 70 g	

## Connection Assignment

Option:



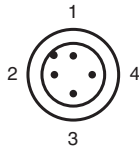
Release date: 2023-04-04 Date of issue: 2023-04-04 Filename: 249879\_eng.pdf

Refer to "General Notes Relating to Pepperl+Fuchs Product Information".

Pepperl+Fuchs Group  
www.pepperl-fuchs.comUSA: +1 330 486 0001  
fa-info@us.pepperl-fuchs.comGermany: +49 621 776 1111  
fa-info@de.pepperl-fuchs.comSingapore: +65 6779 9091  
fa-info@sg.pepperl-fuchs.com

- = Light on
- = Dark on

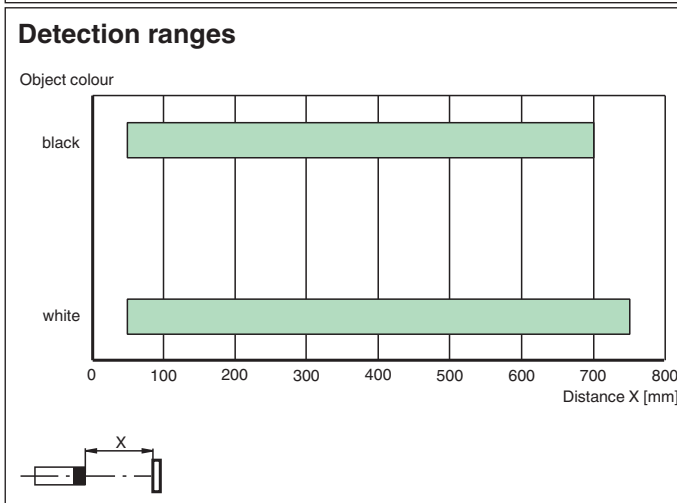
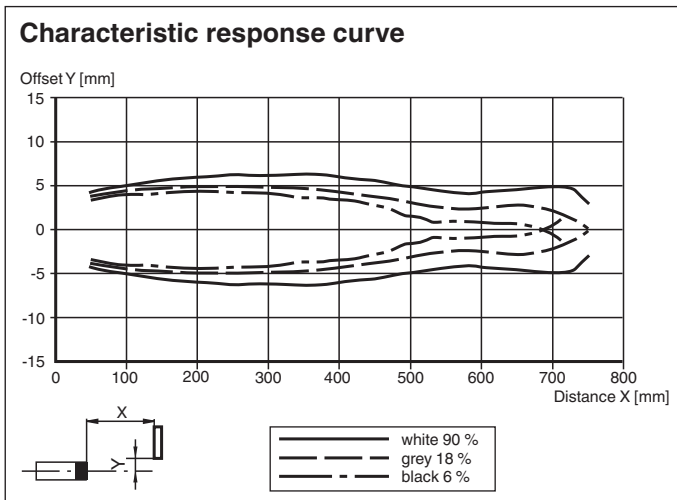
## Connection Assignment



Wire colors in accordance with EN 60947-5-2





1	BN	(brown)
2	WH	(white)
3	BU	(blue)
4	BK	(black)

## Characteristic Curve



Release date: 2023-04-04 Date of issue: 2023-04-04 Filename: 249879\_eng.pdf

## Accessories

	<b>V1-G-2M-PUR</b>	Female cordset single-ended M12 straight A-coded, 4-pin, PUR cable grey
	<b>V1-W-2M-PUR</b>	Female cordset single-ended M12 angled A-coded, 4-pin, PUR cable grey
	<b>BF 30</b>	Mounting flange, 30 mm
	<b>BF 30-F</b>	Plastic mounting adapter, 30 mm