



Model Number

PMI14V-F112-U-IO-V31-Y253675

Features

- Parameterization and diagnosis via IO-Link
- Measuring range 0 ... 14 mm
- Analog output 0 V ... 5 V

Technical data

General specifications

Installation	flush
Object distance	max. 2.5 mm
Measurement range	0 ... 14 mm

Nominal ratings

Operating voltage U_B	18 ... 30 V DC
Reverse polarity protection	reverse polarity protected
Linearity error	± 0.3 mm
Repeat accuracy	± 0.05 mm
Resolution	33 μ m
Temperature drift	± 0.5 mm
No-load supply current I_0	≤ 20 mA
Operating voltage indicator	LED green

Interface

Interface type	IO-Link
Mode	COM 2 (38.4 kBaud)
Value range	0000h ... 7000h

Analog output

Output type	voltage output 0 ... 5 V
Load resistor	$\geq 1000 \Omega$

Ambient conditions

Ambient temperature	-25 ... 70 °C (-13 ... 158 °F)
---------------------	--------------------------------

Mechanical specifications

Connection type	M8 x 1 connector, 4-pin
Housing material	PA 66
Protection degree	IP67
Material	
Target	mild steel, e. g. 1.0037, SR235JR (formerly St37-2)
Note	The data relating to accuracy only apply to a distance to the object to be detected of 1 ... 2.5 mm.

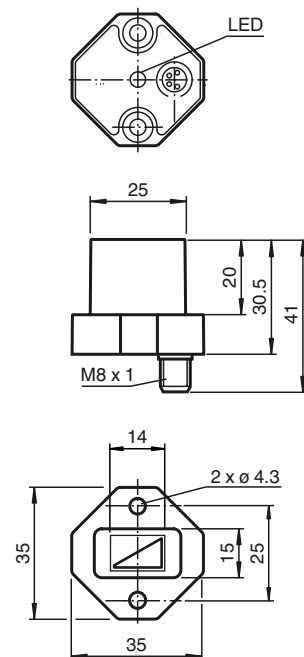
Compliance with standards and directives

Standard conformity	
Standards	EN 60947-5-2:2007 IEC 60947-5-2:2007

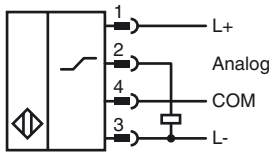
Approvals and certificates

UL approval	cULus Listed, General Purpose, Class 2 Power Source
CCC approval	CCC approval / marking not required for products rated ≤ 36 V

Dimensions



Electrical Connection



Pinout



Wire colors in accordance with EN 60947-5-2

1	BN	(brown)
2	WH	(white)
3	BU	(blue)
4	BK	(black)

Accessories

BT-F90-W

Damping element; lateral screw holes

V31-GM-2M-PUR-V1-G

Connection cable, M8 to M12, PUR cable, 4-pin

IO-Link-Master01-USB

IO-Link master, supply via USB port or separate power supply, LED indicators, M12 plug for sensor connection

Information on Installation and Operation

Safety Information



Warnung

This product must not be used in applications in which the safety of persons depends on the function of the device.

This product is not a safety component as specified in the EU Machinery Directive.

Actuator

The linear position measurement system is optimally aligned to the geometry of Pepperl+Fuchs actuators.

Using Your Own Actuators

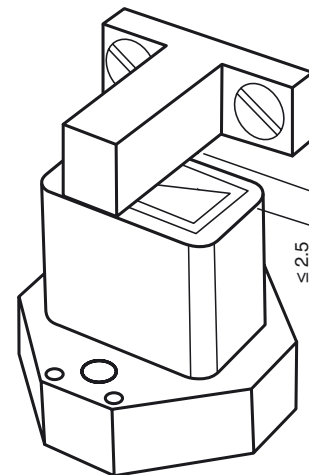
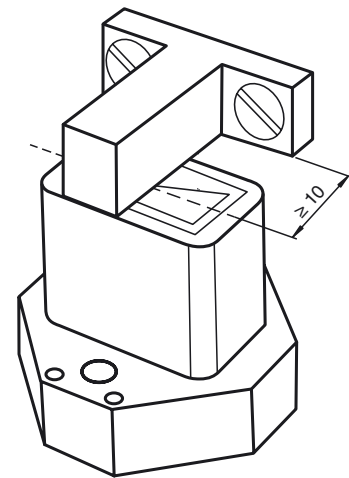
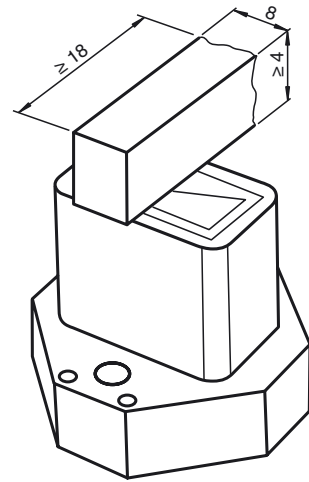
Generally speaking, it is possible for you to use your own actuators. The specified measurement accuracy of the sensor will be achieved only if the actuator has the following properties:

- Material: construction steel such as S235JR+AR (previously St37)
- Dimensions (L x W x H): $\geq 18 \text{ mm} \times 8 \text{ mm} \times \geq 4 \text{ mm}$
- The active surface of the actuator must protrude across the entire sensor width.

Note:

The width of the actuator must be precisely 8 mm. If the width of the actuator deviates from this value, the position values will differ.

Additional Information



Release date: 2013-12-11 15:40 Date of issue: 2013-12-11 253675_eng.xml

Installation

- It is possible to flush mount the device.
- The distance between the center of the measurement field (framed area on the front panel of the sensor) and the fixing base or fixing elements (e.g., protruding screw heads) of the actuator must be at least 10 mm.

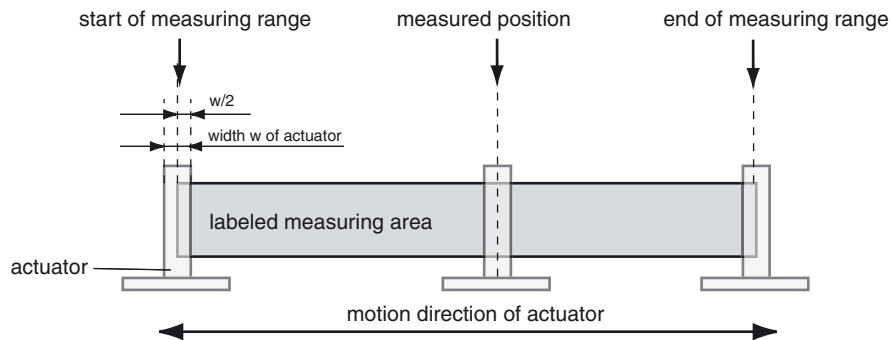
Operating Instructions

The specified measurement accuracy is achieved if the distance of the actuator from the sensor surface is max. 2.5 mm.

Definition of the Measuring Range/Measured Position

The measured position of the actuator is based on half of the width (center of the actuator).

The measuring range starts and ends when the actuator covers the measurement field marked on the sensor with half of its width in the course of its longitudinal movement.



Supported IO-Link device parameters

Index	Subindex	Name
Standard operation control		
0x7F		Locator indication control
User information		
0xC0		UT1, User tag 1
0xC1		UT2, User tag 2

Details of the listed device parameters can be found in the manual.