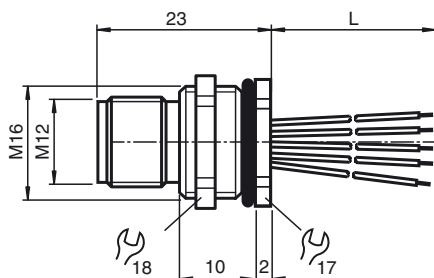




**Dimensions**



**Model Number**

**V15S-M16H-500**  
Receptacles, M12/M16, 5-pin

**Features**

- Rear/screw mounting

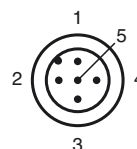
**Accessories**

**LOCKNUT M16 NICKEL BRASS**  
Nut, nickel-plated brass

**Technical data**

<b>General specifications</b>		
Number of pins		5
<b>Electrical specifications</b>		
Operating voltage	$U_B$	max. 60 V DC
Test voltage		> 2000 V <sub>eff</sub> AC
Operating current	$I_B$	max. 4 A
Volume resistance		< 3 mΩ
Insulation resistance		≥ 100 MΩ
<b>Ambient conditions</b>		
Ambient temperature		-25 ... 85 °C (-13 ... 185 °F) active -40 ... 85 °C (-40 ... 185 °F) fixed
Pollution Degree		3
<b>Mechanical specifications</b>		
Degree of protection		IP67
Connection		Tinned copper single leads, Ø1.2 ±0.07 mm
<b>Material</b>		
Contacts		CuZn
Contact surface		Au
Threaded bushings		Zinc die-casting, nickel-plated
Seal		FKM
Core insulation		TPE
<b>Cable</b>		
Cores		5 x 0.34 mm <sup>2</sup>
Conductor construction		7 x 0.25 mm Ø AWG 22
Length	L	500 mm
Installation		Rear mounting M16

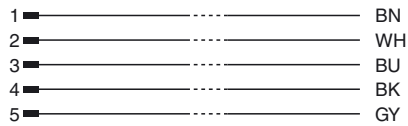
**Electrical connection**



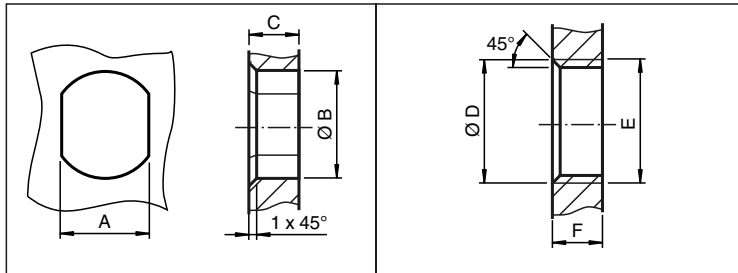
Release date: 2015-11-13 16:12 Date of issue: 2015-11-13 257471\_eng.xml

Refer to "General Notes Relating to Pepperl+Fuchs Product Information".

**Electrical connection**



**Installation Note**



	A	B	C	D	E	F
M8	7.1 <sup>+0.1</sup>	Ø 8.2 <sup>+0.1</sup>	2 - 4 mm	-	M8x0.5	2 - 4 mm
M12	11 <sup>+0.1</sup>	Ø 12.2 <sup>+0.1</sup>	< 4 mm	-	M12x1	< 4.5 mm
M16	13.5 <sup>+0.1</sup>	Ø 16.1	< 4.5 mm	Ø 17 <sup>+0.2</sup>	M16x1.5	> 2.5 mm
M20	13.5 <sup>+0.1</sup>	Ø 20.1	-	Ø 20 <sup>+0.2</sup>	M20x1.5	< 6 mm
PG9	13.5 <sup>+0.1</sup>	Ø 15.3 <sup>+0.1</sup>	< 4.5 mm	Ø 16	PG9	> 2.5 mm
PG13.5	18.8 <sup>+0.1</sup>	Ø 20.5 <sup>+0.1</sup>	-	Ø 22 <sup>±0.1</sup>	PG13.5	-

Release date: 2015-11-13 16:12 Date of issue: 2015-11-13 257471\_eng.xml