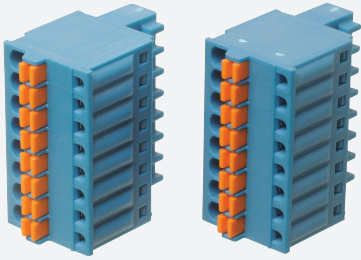


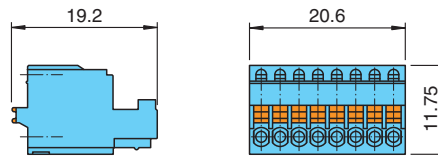
Terminal Block

LB9130A



- Spring terminal
- For LB modules
- 8-pole
- Color blue
- For Ex ia or Ex ib applications
- For wire end ferrules without plastic sleeve only

Dimensions



Technical Data

General specifications			
Number of pins			8
Labeling			none
Electrical specifications			
Rated voltage	U_r		160 V
Rated current	I_r		4 A
Mechanical specifications			
Core cross section			0.14 ... 0.5 mm ²
Housing			blue
Mass			approx. 4.6 g
Dimensions			(W x H x D) 20.6 mm x 11.75 mm x 19.2 mm
Construction type			spring terminal
Coding			Coding profile CP-MC 0,5 Phoenix Contact order code: 1881435

Release date: 2023-10-31 Date of issue: 2023-10-31 Filename: 258378_eng.pdf

Refer to "General Notes Relating to Pepperl+Fuchs Product Information".

Pepperl+Fuchs Group
www.pepperl-fuchs.com

USA: +1 330 486 0002
pa-info@us.pepperl-fuchs.com

Germany: +49 621 776 2222
pa-info@de.pepperl-fuchs.com

Singapore: +65 6779 9091
pa-info@sg.pepperl-fuchs.com

 PEPPERL+FUCHS

Technical Data

General information

Packing unit	2 item(s)
--------------	-----------

Release date: 2023-10-31 Date of issue: 2023-10-31 Filename: 258378_eng.pdf

Refer to "General Notes Relating to Pepperl+Fuchs Product Information".

Pepperl+Fuchs Group
www.pepperl-fuchs.com

USA: +1 330 486 0002
pa-info@us.pepperl-fuchs.com

Germany: +49 621 776 2222
pa-info@de.pepperl-fuchs.com

Singapore: +65 6779 9091
pa-info@sg.pepperl-fuchs.com