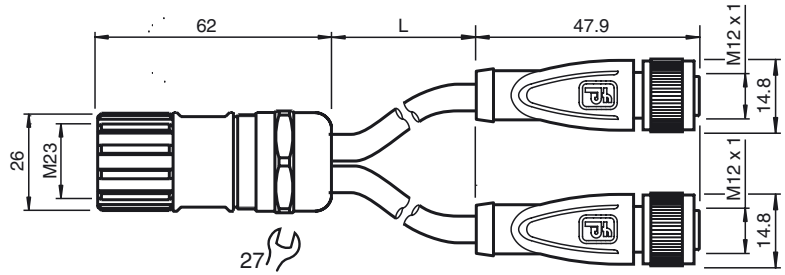




**Dimensions**



**Model Number**

V1/15B-G-0,3M-LIHCH-TP-T-V23-G

Y connection cable

**Features**

- Degree of protection IP67 / IP68 / IP69K

**Technical data**

**General specifications**

Number of pins 6 + PE

**Electrical specifications**

Operating voltage  $U_B$  max. 250 V AC/DC  
 Operating current  $I_B$  12 A

**Ambient conditions**

Ambient temperature Body: -40 ... 90 °C (-40 ... 194 °F)  
 cable, fixed: -25 ... 80 °C (-13 ... 176 °F)

**Mechanical specifications**

Contact elements spring-loaded contact socket  
 Pin diameter 1 mm  
 Degree of protection IP67 / IP68 / IP69k  
 Connection 1 x M23 straight connector 2 x M12 straight sockets

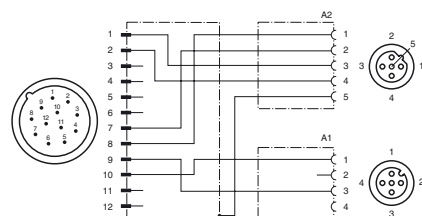
**Material**

Contacts CuSn / Au  
 Contact surface Au  
 Body M23: Diecast zinc  
 M12: TPU, black

**Cable**

Slotted nut Diecast zinc  
 Sleeve connector Diecast zinc  
 Core insulation PP/PVC  
 Cable fine-strand, flexible  
 Sheath diameter  $\varnothing$  4.8 mm  
 Bending radius > 5 x cable diameter  
 Color grey  
 Cores 4 x 0.34 mm<sup>2</sup>  
 Conductor construction 19 x 0.15 mm  $\varnothing$   
 Shield grid covering 85 %  
 Length L 0.3 m

**Electrical connection**



Release date: 2015-06-24 12:04 Date of issue: 2015-06-24 262936\_eng.xml

Refer to "General Notes Relating to Pepperl+Fuchs Product Information".

Pepperl+Fuchs Group  
 www.pepperl-fuchs.com

USA: +1 330 486 0001  
 fa-info@us.pepperl-fuchs.com

Germany: +49 621 776 4411  
 fa-info@de.pepperl-fuchs.com

Singapore: +65 6779 9091  
 fa-info@sg.pepperl-fuchs.com